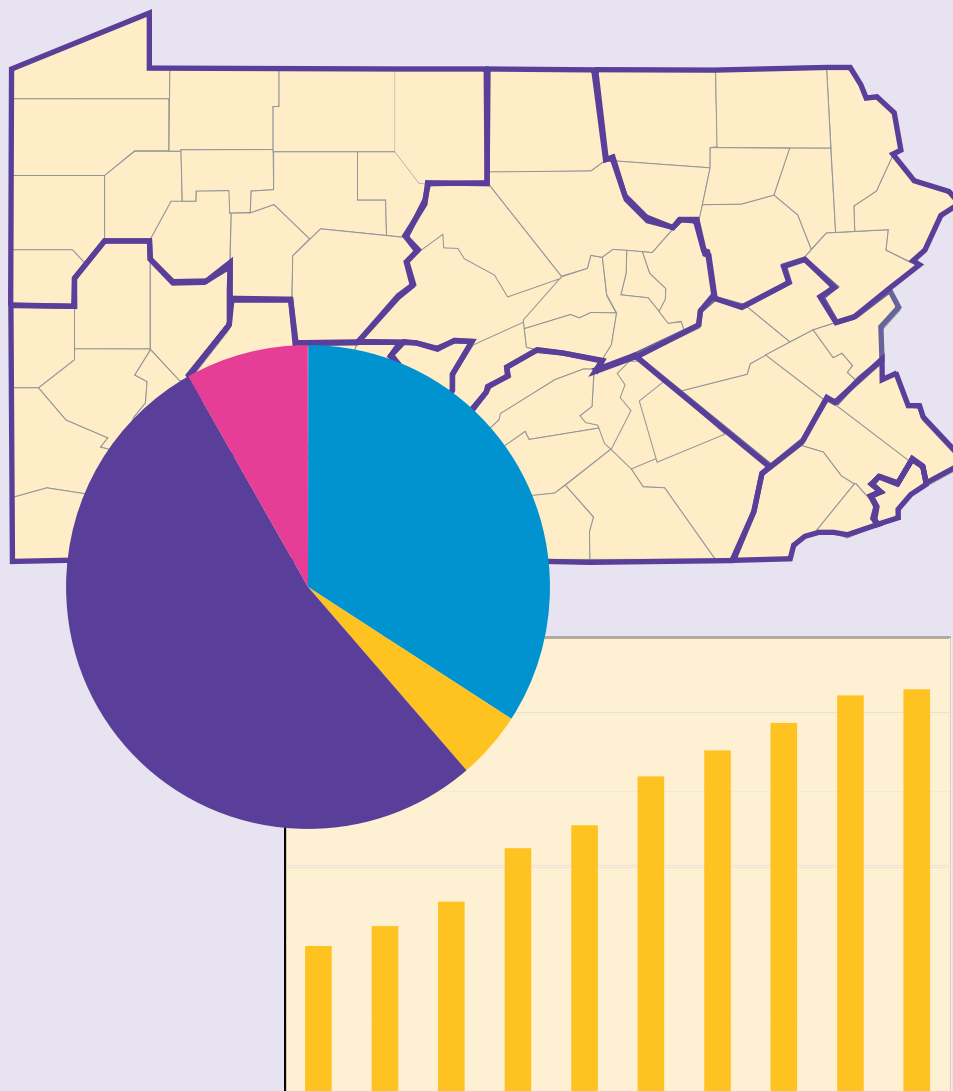


# Financial Analysis 2010

## Volume Two • Ambulatory Surgery Centers

*Fiscal Year 2010*





The Pennsylvania Health Care Cost Containment Council (PHC4) is an independent state agency established by Pennsylvania law (Act 89 of 1986, as amended). PHC4 is charged with collecting, analyzing and reporting information that can be used to improve the quality and restrain the cost of health care in Pennsylvania.

## Table of Contents

Key Findings .....	1
Introduction .....	2
Ambulatory Surgery Centers .....	3
Operating and Total Margins.....	4
Outpatient Visits and Revenue .....	6
Outpatient Procedures .....	7
Payer Mix.....	8
Ambulatory Surgery Center Data.....	9
Footnotes .....	24
Explanation of Terms and Measures .....	25
Non-Compliant Ambulatory Surgery Centers .....	26

## Key Findings

- The number of ambulatory surgery centers (ASCs) grew more slowly in Pennsylvania during fiscal year 2010 (FY10). There were 266 ASCs in FY10, a net increase of four ASCs from FY09.
- The statewide average operating and total margins for ASCs during FY10 were 26.20% and 26.29%, respectively.
- The operating and total margins were in the 26.00% to 26.30% range during the period from FY08 to FY10.
- The ASCs reported \$993.9 million net outpatient revenue during FY10 and reported 1.0 million outpatient visits.
- The number of outpatient procedures performed by the ASCs increased only 2.0% during FY10 from FY09. In FY09, the number of procedures at the ASCs increased 7.2% from the number performed in FY08.

**TABLE 1**  
**Ambulatory Surgery Centers Regional and Statewide Averages, FY10**

Region*	Operating Margin	Total Margin	3-year Average Total Margin	Medicare Share of Net Patient Revenue	Medical Assistance Share of Net Patient Revenue	Average Visits
<b>Region 1</b>	24.72%	24.71%	25.05%	28.38%	4.40%	3,966
<b>Region 2</b>	17.55%	17.66%	17.98%	30.99%	8.00%	4,864
<b>Region 3</b>	18.48%	18.51%	19.64%	21.94%	4.27%	4,506
<b>Region 4</b>	33.57%	34.07%	30.60%	19.43%	2.05%	3,886
<b>Region 5</b>	27.96%	28.04%	26.47%	20.89%	3.06%	4,385
<b>Region 6</b>	29.42%	29.48%	30.76%	29.20%	4.61%	4,292
<b>Region 7</b>	35.02%	35.04%	35.36%	24.17%	1.93%	3,973
<b>Region 8</b>	23.36%	23.45%	24.40%	24.11%	2.81%	3,818
<b>Region 9</b>	18.92%	18.95%	16.98%	26.07%	9.46%	3,373
<b>Statewide</b>	<b>26.20%</b>	<b>26.29%</b>	<b>26.23%</b>	<b>24.52%</b>	<b>3.82%</b>	<b>4,040</b>

\* See page 9 for the list of counties included in each region.

## Introduction

On an annual basis, the Pennsylvania Health Care Cost Containment Council (PHC4) produces a series of financial reports that measure the financial health of Pennsylvania's hospitals and ambulatory surgery centers.

This is the second volume of a three-volume series. *Volume One*, released in May 2011, focused on the financial health of Pennsylvania's general acute care (GAC) hospitals. This report, *Volume Two*, concentrates on Pennsylvania's ambulatory surgery centers (ASCs). *Volume Three*, to be released later this year, will focus on rehabilitation hospitals, psychiatric hospitals, state psychiatric hospitals, long-term acute care hospitals and specialty hospitals (non-GAC hospitals). To provide perspective on the overall outpatient care provided in the Commonwealth, information on outpatient services performed by hospitals is mentioned in this report.

The reporting year for the ASCs in *Volume Two* is based on each facility's fiscal year that ended during 2010. The fiscal year for the majority of ASCs was the calendar year ending on December 31, 2010. For those facilities that do not utilize a calendar year, the fiscal year typically ended on June 30, 2010.

Information in this report was derived from annual financial statements and data submissions, as well as quarterly ambulatory/outpatient procedure data supplied by each facility. Every reasonable effort has been made to ensure the accuracy of the information. Each facility had the opportunity to review its data and make changes, if necessary. The ultimate responsibility for accuracy lies with the individual facility.

**TABLE 2**  
**Number of Facilities, FY10**  
by Facility Type

Facility Type	Number of Facilities
Ambulatory Surgery Centers	266
General Acute Care Hospitals	165
Non-General Acute Care Hospitals	78
<b>Total</b>	<b>509</b>

# Ambulatory Surgery Centers

During fiscal year 2010 (FY10), 266 ambulatory surgery centers (ASCs) were licensed to operate in Pennsylvania. The number of ASCs in Pennsylvania increased at a slower pace in FY10 than in previous years. Eight ASCs opened and four closed between FY09 and FY10, for a net gain of four facilities.

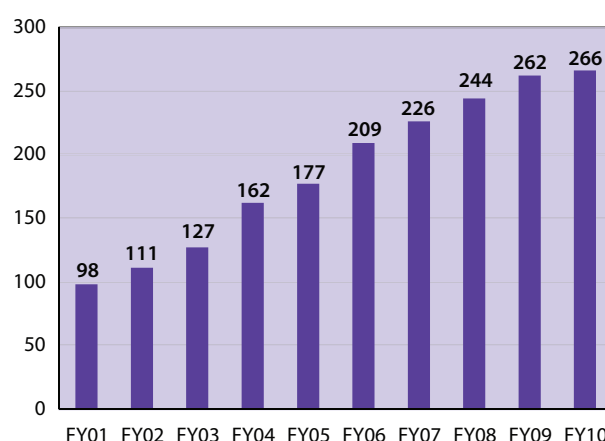
Figures 1 and 2 illustrate the growth in the number of ASCs in Pennsylvania from FY01 to FY10. Between FY01 and FY10, the number of ASCs in Pennsylvania grew by 168 facilities, with the largest increase (28%) occurring in FY04. Over the same time period, the greatest concentration of growth occurred in Region 8 – Bucks, Chester, Delaware and Montgomery counties (see Figure 2).

The analysis for FY10 and the individual ASC tables in this report is based on data collected from 256 ASCs; ten ASCs did not submit complete data and their data is not included in this report.

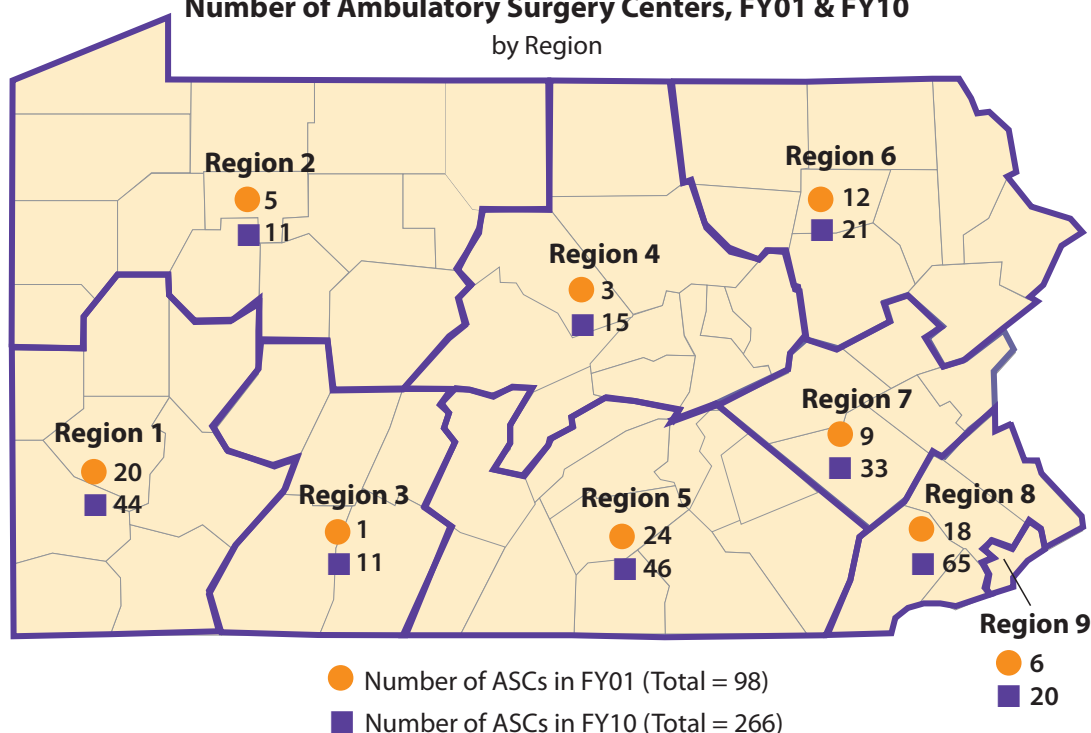
Statewide and regional averages that are expressed as a percentage (e.g., operating margin) in

this report were calculated as if the entire group (state or region) were a single reporting entity. For example, the regional average operating margins were calculated by dividing the sum of operating income for all ASCs in the region and the sum of total operating revenue for all ASCs in the region.

**FIGURE 1**  
**Number of Ambulatory Surgery Centers**  
by Fiscal Year



**FIGURE 2**  
**Number of Ambulatory Surgery Centers, FY01 & FY10**  
by Region



## Operating and Total Margins

The average operating and total margins for ASCs statewide decreased slightly from FY09 to FY10, with the average operating margin decreasing to 26.20% and the total margin decreasing to 26.29%. The average statewide operating and total margins for ASCs have changed only marginally over the past three fiscal years, FY08 to FY10 (see Figure 3). The statewide average operating and total margins for ASCs are similar because ASCs realize only a small amount of non-operating income. Eighty-eight percent (225) of reporting Pennsylvania ASCs operated as for-profit facilities in FY10. The remaining twelve percent (31) operated as non-profit facilities.

There is a wide variation among the margins reported by individual ASCs. During FY10, the total margin ranged from a high of 75.17% to a low of negative 1,073.66%.

Figure 3 displays the statewide average operating and total margins for ASCs and general acute care (GAC) hospitals. Statewide average operating and total margins for freestanding rehabilitation, psychiatric, long-term acute care, and specialty hospitals (non-GAC) will be reported in PHC4's *Financial Analysis, Volume Three* to be released later this year.

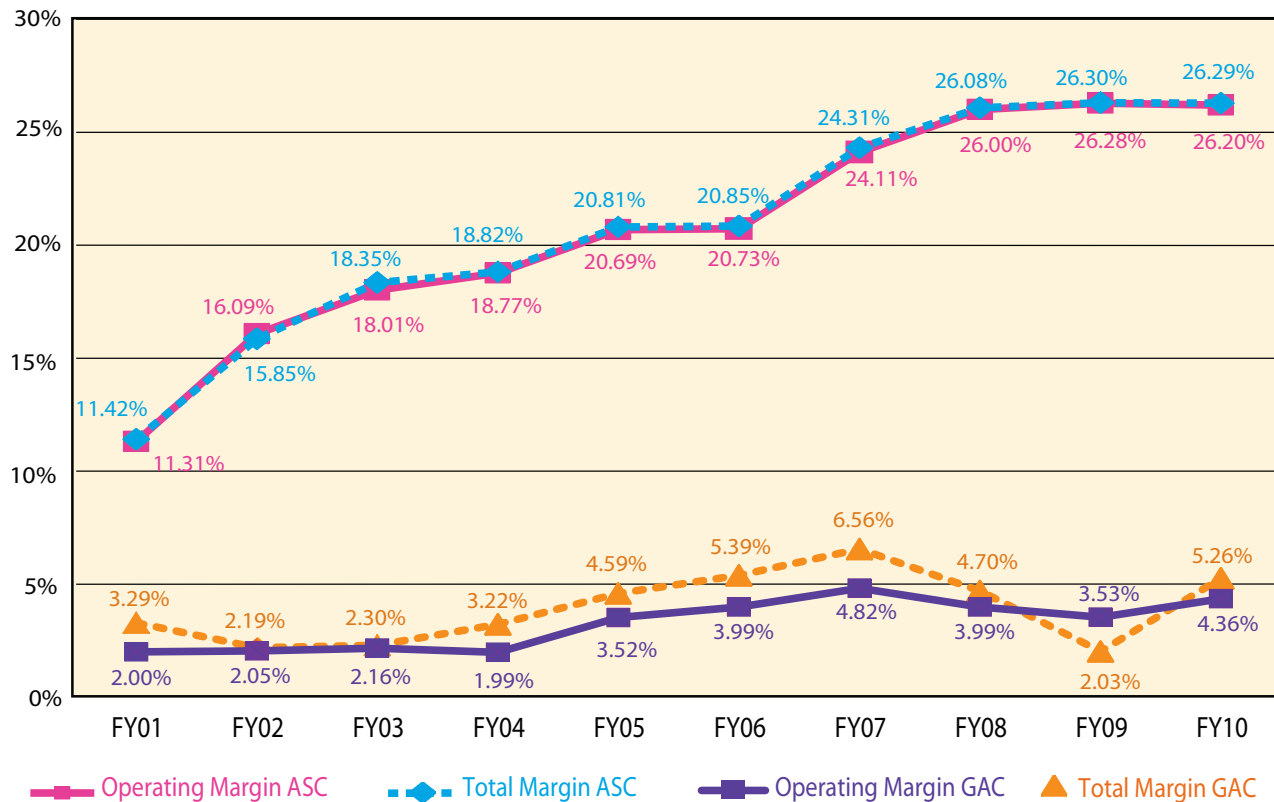
It is important to point out that the statewide average margins for ASCs cannot be directly compared to the average margins for the GAC hospitals for two reasons.

Physician owners of surgery centers may receive all or part of their compensation as a distribution of net income, instead of salaries or fees. Consequently, such distributions are not reported as an operating expense; if they were, that would reduce operating and total margins. In contrast, physician compensation paid by GAC hospitals is almost exclusively reported as salary or professional service expenses and included in operating and total margin figures.

In addition, the majority of ASCs are limited liability partnerships or Sub-Chapter S corporations and therefore, are not subject to income taxes. Income taxes are generally paid as personal income tax by the owners. Consequently, the total margin for most for-profit ASCs does not reflect income tax expenses. On the other hand, the total margins for the state's for-profit GAC hospitals are calculated after the tax expense is deducted.

# Operating and Total Margins

**FIGURE 3**  
**Statewide Average Operating and Total Margins**  
**for Ambulatory Surgery Centers and General Acute Care Hospitals**  
 by Fiscal Year



## Outpatient Visits and Revenue

Pennsylvania's hospitals and ASCs reported 43.3 million total outpatient visits during FY10 (Table 3). GAC hospitals continued to be the predominate providers of outpatient care in FY10. GAC hospitals reported 39.9 million outpatient visits (includes home health), which represents 92.2% of the total number of outpatient visits in the Commonwealth. Non-GAC hospitals reported 2.4 million outpatient visits (5.4%), and ASCs reported 1.0 million outpatient visits (2.4%).

Combined, hospitals and ASCs reported \$15.5 billion in statewide net patient revenue for outpatient care during FY10. GAC hospitals accounted for 91.7% of the total net outpatient revenue, non-GAC hospitals 1.9%, and ASCs 6.4%. The \$993.9 million net outpatient revenue reported by ASCs during FY10 represents 7.0% of the outpatient revenue received by GAC hospitals.

The small increase (1.0%) in the number of outpatient visits reported by ASCs during FY10,

combined with the 6.2% increase in net outpatient revenue, resulted in an average revenue per visit of \$961 during FY10, a 5.2% increase over the FY09 figure.

There is wide variation in the average outpatient revenue per visit across the facility categories. This is primarily due to the variation in the level of resources provided per visit. For example, a patient may receive care as a series of visits comprised of relatively short treatments (e.g., psychotherapy) in a hospital outpatient setting, while a patient at an ASC may be subject to an entire surgical procedure during a single visit. The average outpatient revenue per visit at GAC hospitals reflects reimbursements for a wide range of outpatient services. As a group, ASCs provide a wide variety of outpatient services at varying levels of resource intensity; however, on an individual basis, ASCs specialize in surgical procedures, e.g., endoscopy, laser surgery, ophthalmology, and spine care.

**TABLE 3**  
**Outpatient Visits and Revenue, FY10**  
by Facility Type

Facility Type	Visits	Net Outpatient Revenue (thousands)	Average Outpatient Revenue per Visit
Ambulatory Surgery Centers	1,034,225	\$993,903	\$961
General Acute Care Hospitals	39,883,587	\$14,236,009	\$357
Non-General Acute Care Hospitals*	2,354,198	\$299,596	\$127
<b>Statewide</b>	<b>43,272,010</b>	<b>\$15,529,508</b>	<b>\$359</b>

\* Excludes State Psychiatric Hospitals.



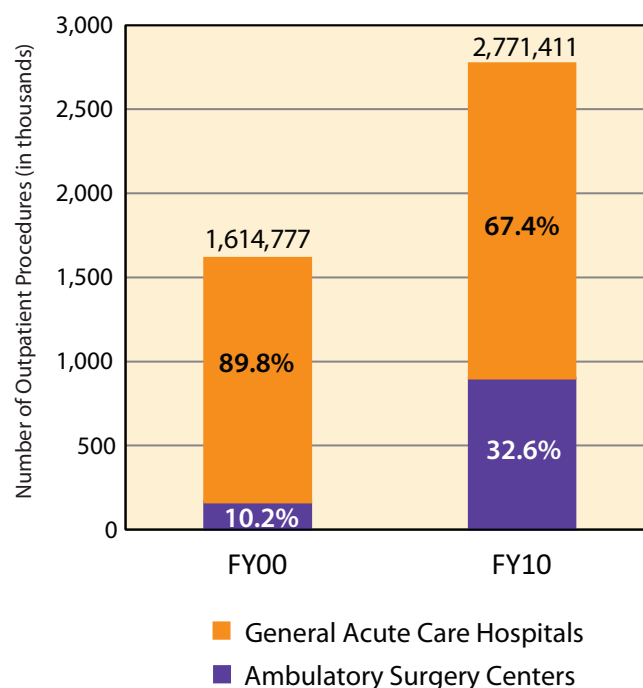
## Outpatient Procedures

Outpatient procedures include surgical and nonsurgical procedures.<sup>1</sup> During FY10, 2.8 million outpatient procedures were performed at ASCs and GAC hospitals (Figure 4 and Table 4). ASCs performed 32.6% or 902,143 of these procedures. In FY00, ASCs performed 10.2% or 164,690 of the total 1.6 million outpatient procedures performed in Pennsylvania. During FY09, ASCs performed 32.5% or 884,272 of the total 2.7 million outpatient procedures.

There was a 71.6% growth in the total number of outpatient procedures performed at ASCs and outpatient departments of GAC hospitals between FY00 and FY10; 63.8% of that increase occurred at ASCs.

During FY10, the net growth in the number of outpatient procedures performed at GAC outpatient departments and ASCs combined increased 1.9% over FY09 numbers. The number of outpatient procedures performed at GAC outpatient departments increased 1.9%, and the number of procedures at ASCs increased 2.0% in FY10. In FY09, the number of procedures at the ASCs increased 7.2% from the number performed in FY08.

**FIGURE 4**  
**Outpatient Procedures<sup>1</sup>**  
by Facility Type



**TABLE 4**  
**Outpatient Procedures<sup>1</sup>**  
by Facility Type

Facility Type	FY00		FY10	
	Procedures	Percent	Procedures	Percent
Ambulatory Surgery Centers	164,690	10.2%	902,143	32.6%
General Acute Care Hospitals	1,450,087	89.8%	1,869,268	67.4%
<b>Statewide</b>	<b>1,614,777</b>	<b>100.0%</b>	<b>2,771,411</b>	<b>100.0%</b>

<sup>1</sup>The outpatient procedure codes that are collected by PHC4 are identified on the PHC4 website at <http://www.phc4.org/services/datarequests/procedures.htm>.

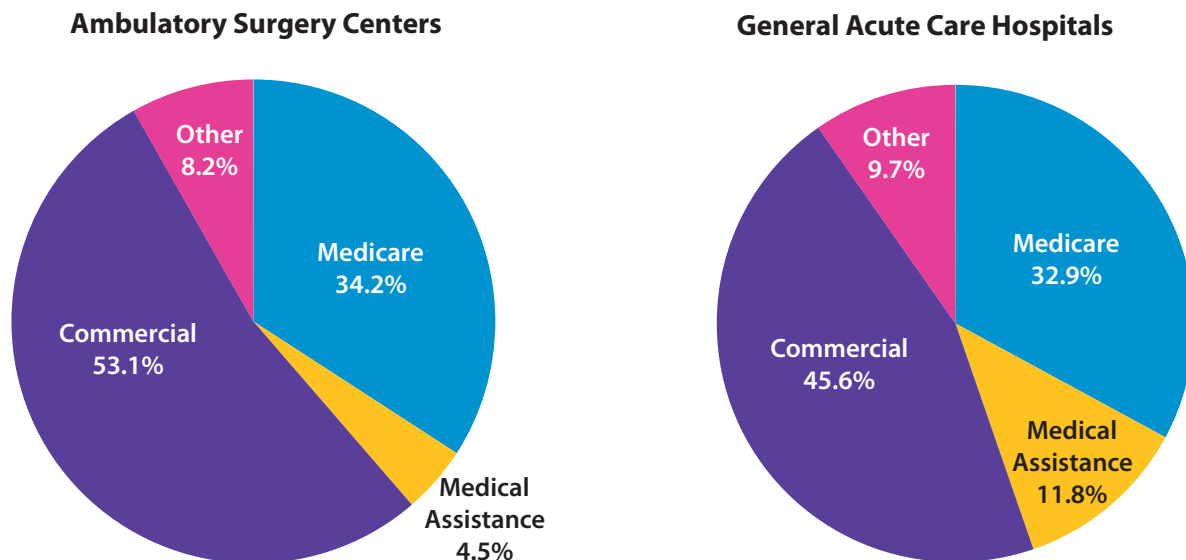
## Payer Mix

Figure 5 presents the payer mix for outpatient procedures performed at ASCs compared to GAC hospital outpatient departments. The greatest differences between the two facility types are the proportion of procedures covered by Medical Assistance (MA) and commercial health insurance plans. During FY10, MA was the payer for 4.5% of outpatient procedures at ASCs, compared to 11.8% at GAC hospitals. Commercial health insurance

plans covered 53.1% of outpatient procedures at ASCs, compared to 45.6% at GAC hospitals.

The higher percentage of Medicare-based revenue received by ASCs is consistent with the difference in the average patient age at ASCs and GAC outpatient departments. In FY10, the mean age for patients undergoing an outpatient procedure at an ASC was 56.8 years, compared to 52.1 years for patients at GAC outpatient departments.

**FIGURE 5**  
**Outpatient Procedures,<sup>1</sup> FY10**  
by Facility Type & Payer



<sup>1</sup>The outpatient procedure codes that are collected by PHC4 are identified on the PHC4 website at <http://www.phc4.org/services/datarequests/procedures.htm>.

## Individual Ambulatory Surgery Center Data

The individual ASC data tables on the following pages are based on data collected from 256 ASCs; ten ASCs did not submit complete data and their data is not included in this report. The facilities listed in the tables are arranged according to region.

Statewide and regional averages for ASCs are presented in the individual facility tables. Averages expressed as a percentage (e.g., operating margin) were calculated as if the entire group (state or region) were a single reporting entity. For example, the regional average operating margins were calcu-

lated by dividing the sum of operating income for all ASCs in the region and the sum of total operating revenue for all ASCs in the region.

The FY10 operating and total margins for each individual facility are included in these tables. Each facility's corresponding operating income, total income, and total operating revenue, expressed in dollars, can be found on PHC4's website at [www.phc4.org](http://www.phc4.org). (Note: Other operating revenue must be included with net patient revenue to calculate the operating income that is used for operating margin.)

### Pennsylvania Counties by Region

<b>Region 1:</b>	Allegheny, Armstrong, Beaver, Butler, Fayette, Greene, Washington, and Westmoreland.
<b>Region 2:</b>	Cameron, Clarion, Clearfield, Crawford, Elk, Erie, Forest, Jefferson, Lawrence, McKean, Mercer, Potter, Venango, and Warren.
<b>Region 3:</b>	Bedford, Blair, Cambria, Indiana, and Somerset.
<b>Region 4:</b>	Centre, Clinton, Columbia, Lycoming, Mifflin, Montour, Northumberland, Snyder, Tioga, and Union.
<b>Region 5:</b>	Adams, Cumberland, Dauphin, Franklin, Fulton, Huntingdon, Juniata, Lancaster, Lebanon, Perry, and York.
<b>Region 6:</b>	Bradford, Lackawanna, Luzerne, Monroe, Pike, Sullivan, Susquehanna, Wayne, and Wyoming.
<b>Region 7:</b>	Berks, Carbon, Lehigh, Northampton, and Schuylkill.
<b>Region 8:</b>	Bucks, Chester, Delaware, and Montgomery.
<b>Region 9:</b>	Philadelphia.

## Individual Ambulatory Surgery Center Data

Region/Ambulatory Surgery Center	Net Patient Revenue NPR (thousands)				3-yr Avg Change in NPR FY07-FY10	Total Operating Expenses TOE (thousands)				3-yr Avg Change in TOE FY07-FY10
	FY10	FY09	FY08	FY07		FY10	FY09	FY08	FY07	
<b>Statewide Average</b>	<b>\$3,882</b>	<b>\$3,774</b>	<b>\$3,622</b>	<b>\$3,358</b>	<b>5.21%</b>	<b>\$2,885</b>	<b>\$2,799</b>	<b>\$2,700</b>	<b>\$2,568</b>	<b>4.12%</b>
<b>Region 1 Average</b>	<b>\$3,879</b>	<b>\$3,655</b>	<b>\$3,271</b>	<b>\$3,154</b>	<b>7.66%</b>	<b>\$2,933</b>	<b>\$2,742</b>	<b>\$2,482</b>	<b>\$2,407</b>	<b>7.28%</b>
1 20/20 SC <sup>1,10</sup>	\$2,578	\$2,222	\$2,020	\$1,760	15.51%	\$1,325	\$1,219	\$1,313	\$902	15.61%
1 Aestique ASC <sup>1,10</sup>	\$1,873	\$1,761	\$2,053	\$1,934	-1.04%	\$1,872	\$1,731	\$2,014	\$1,950	-1.33%
1 Assoc Kidney/Hypertension <sup>1,10</sup>	\$1,096	\$906	NA	NA	NA	\$797	\$762	NA	NA	NA
1 Associates SC <sup>1,10</sup>	\$4,353	\$4,785	\$4,689	NA	NA	\$3,399	\$3,664	\$3,705	NA	NA
1 Butler ASC <sup>1,10</sup>	\$7,346	\$7,760	\$7,461	\$6,655	3.46%	\$5,447	\$5,224	\$4,841	\$4,298	8.91%
1 CHP North SC <sup>7</sup>	\$10,787	\$10,451	\$9,690	\$8,683	8.08%	\$8,884	\$8,391	\$6,086	\$4,995	25.96%
1 CHP South SC <sup>7</sup>	\$4,033	\$4,143	\$4,146	\$3,532	4.73%	\$3,381	\$3,526	\$2,419	\$1,744	31.28%
1 Delmont SC <sup>1,2,4,10,13</sup>	\$127	NA	NA	NA	NA	\$321	NA	NA	NA	NA
1 Dermatology & Cosmetic SC <sup>1,10</sup>	\$2,501	\$2,055	\$1,405	\$920	57.27%	\$2,435	\$2,054	\$1,545	\$915	55.35%
1 Digestive Hlth Endoscopy <sup>1,10</sup>	\$2,409	\$2,564	\$2,474	\$2,488	-1.06%	\$1,247	\$1,236	\$1,221	\$1,358	-2.73%
1 East Side SC <sup>1,10,13</sup>	\$3,430	\$2,829	NR	NA	NA	\$3,164	\$3,367	NR	NA	NA
1 Excelsa Health Norwin <sup>3,7</sup>	\$3,752	\$3,698	\$228	NR	NR	\$2,334	\$2,482	\$335	NR	NR
1 Four Seasons Endoscopy <sup>1,10</sup>	\$3,154	\$3,366	\$3,149	\$2,942	2.41%	\$1,508	\$1,542	\$1,381	\$1,245	7.05%
1 Gamma SC <sup>1,10</sup>	\$3,423	\$2,561	\$1,746	\$1,656	35.56%	\$2,843	\$2,588	\$2,119	\$1,993	14.21%
1 Heritage Valley SC <sup>7</sup>	\$5,050	\$5,060	\$4,998	\$5,119	-0.45%	\$4,793	\$5,215	\$5,233	\$4,818	-0.18%
1 Laurel Surgical Center <sup>1,10,13</sup>	\$5,652	\$5,346	\$4,948	\$4,840	5.60%	\$3,895	\$3,953	\$3,938	\$3,161	7.74%
1 Leo R. McCafferty Plastic <sup>1,10</sup>	\$432	\$363	\$380	\$308	13.41%	\$355	\$286	\$281	\$312	4.55%
1 Lowry SC <sup>1,10</sup>	\$611	\$816	\$982	\$1,136	-15.41%	\$609	\$874	\$983	\$1,160	-15.84%
1 McCandless Endoscopy <sup>1,10</sup>	\$928	\$629	NA	NA	NA	\$784	\$729	NA	NA	NA
1 Mt Lebanon SC	\$3,163	\$4,039	\$2,221	\$2,208	14.43%	\$2,192	\$2,006	\$1,887	\$2,074	1.90%
1 Mt Pleasant SC <sup>1,10,13</sup>	\$1,922	\$1,846	\$1,535	\$1,088	25.53%	\$2,239	\$2,228	\$2,008	\$1,808	7.94%
1 North Shore Endoscopy <sup>1,10</sup>	\$1,705	\$1,905	\$2,446	\$2,003	-4.96%	\$1,062	\$1,164	\$1,280	\$1,240	-4.79%
1 Radiance <sup>1,10</sup>	\$3,522	\$3,294	\$3,487	\$2,720	9.82%	\$2,882	\$2,708	\$2,899	\$2,472	5.53%
1 Renal Endocrine Assoc <sup>1,10</sup>	\$987	\$1,267	NA	NA	NA	\$723	\$779	NA	NA	NA
1 SC Cranberry <sup>1,10</sup>	\$2,876	\$2,944	\$2,220	\$2,105	12.20%	\$2,563	\$2,517	\$2,134	\$2,042	8.50%
1 SC Edgeworth Commons <sup>1,10,13</sup>	\$4,566	\$3,617	NR	\$2,985	17.66%	\$3,739	\$3,548	NR	\$2,916	9.41%
1 SC Ligonier <sup>11</sup>	\$721	\$696	\$761	\$690	1.50%	\$698	\$685	\$713	\$678	0.98%
1 Shadyside SC <sup>1,10</sup>	\$461	\$532	\$428	\$396	5.54%	\$335	\$447	\$398	\$289	5.31%
1 South Hills Endoscopy Ctr <sup>1,10</sup>	\$2,703	\$2,822	\$2,744	\$2,456	3.36%	\$1,587	\$1,558	\$1,620	\$1,702	-2.24%
1 Southwestern ASC <sup>1,10,13</sup>	\$3,605	\$3,662	NR	NR	NR	\$3,116	\$3,004	NR	NR	NR
1 Southwestern Endoscopy <sup>1,10</sup>	\$4,068	\$4,200	\$3,966	\$3,744	2.89%	\$2,687	\$2,363	\$2,189	\$2,133	8.67%
1 Southwestern PA Eye SC <sup>1,10,13</sup>	\$2,978	\$2,768	\$2,976	\$2,949	0.33%	\$2,421	\$2,173	\$2,083	\$1,979	7.44%
1 Spartan Health SC <sup>1,10</sup>	\$2,308	\$2,473	\$2,238	\$1,592	14.99%	\$2,148	\$2,236	\$2,142	\$1,649	10.08%
1 Three Rivers Endoscopy <sup>1,10</sup>	\$4,495	\$4,637	\$4,717	\$3,888	5.20%	\$2,653	\$2,424	\$2,543	\$2,186	7.12%
1 Tri-County Surgical <sup>1,10</sup>	\$1,003	\$1,041	\$1,098	\$979	0.85%	\$951	\$982	\$1,031	\$925	0.95%
1 Tri-State SC <sup>1,10</sup>	\$7,541	\$7,631	\$7,979	\$5,279	14.29%	\$5,269	\$5,259	\$4,943	\$4,391	6.67%
1 UPMC Mercy South Side SC <sup>4,7</sup>	\$11,086	NA	NA	NA	NA	\$8,248	NA	NA	NA	NA

See footnotes on page 24.

## Individual Ambulatory Surgery Center Data

Ambulatory Surgery Center	Operating Margin FY10	Total Margin FY10	3-yr Average Total Margin FY08-FY10	Medicare Share of NPR FY10	Medical Assistance Share of NPR FY10	Visits FY10
<b>Statewide Average</b>	<b>26.20%</b>	<b>26.29%</b>	<b>26.23%</b>	<b>24.52%</b>	<b>3.82%</b>	<b>4,040</b>
<b>Region 1 Average</b>	<b>24.72%</b>	<b>24.71%</b>	<b>25.05%</b>	<b>28.38%</b>	<b>4.40%</b>	<b>3,966</b>
20/20 SC <sup>1, 10</sup>	48.62%	48.62%	43.46%	57.46%	2.16%	2,316
Aestique ASC <sup>1, 10</sup>	0.05%	-1.84%	0.80%	15.76%	1.22%	1,478
Assoc Kidney/Hypertension <sup>1, 10</sup>	27.28%	27.28%	NA	44.42%	0.31%	653
Associates SC <sup>1, 10</sup>	21.91%	21.91%	22.13%	57.48%	3.06%	4,401
Butler ASC <sup>1, 10</sup>	25.85%	25.87%	31.34%	25.79%	4.40%	9,155
CHP North SC <sup>7</sup>	17.64%	17.64%	24.47%	0.00%	17.65%	6,395
CHP South SC <sup>7</sup>	16.17%	16.17%	24.31%	0.00%	12.40%	2,337
Delmont SC <sup>1, 2, 4, 10, 13</sup>	-152.97%	-152.97%	NA	3.68%	0.00%	130
Dermatology & Cosmetic SC <sup>1, 10</sup>	2.61%	2.61%	1.09%	43.64%	0.00%	5,117
Digestive Hlth Endoscopy <sup>1, 10</sup>	48.27%	48.27%	50.32%	17.18%	0.03%	4,432
East Side SC <sup>1, 10, 13</sup>	7.74%	7.90%	NR	43.93%	3.42%	2,274
Excelsa Health Norwin <sup>3, 7</sup>	37.79%	37.79%	32.91%	28.52%	2.43%	3,595
Four Seasons Endoscopy <sup>1, 10</sup>	52.23%	52.23%	54.26%	23.71%	0.13%	5,208
Gamma SC <sup>1, 10</sup>	16.94%	16.94%	4.49%	24.30%	0.17%	3,301
Heritage Valley SC <sup>7</sup>	5.09%	5.09%	-0.88%	49.58%	3.33%	3,701
Laurel Surgical Center <sup>1, 10, 13</sup>	31.09%	31.10%	26.11%	17.87%	2.06%	5,168
Leo R. McCafferty Plastic <sup>1, 10</sup>	17.82%	17.82%	21.51%	2.15%	0.00%	761
Lowry SC <sup>1, 10</sup>	0.39%	0.39%	-2.29%	48.18%	0.00%	1,196
McCandless Endoscopy <sup>1, 10</sup>	15.49%	15.49%	NA	7.49%	1.27%	1,600
Mt Lebanon SC	30.70%	30.70%	35.54%	70.83%	0.99%	3,121
Mt Pleasant SC <sup>1, 10, 13</sup>	1.86%	1.86%	1.56%	56.98%	4.59%	1,782
North Shore Endoscopy <sup>1, 10</sup>	37.70%	37.70%	42.11%	8.25%	4.47%	2,894
Radiance <sup>1, 10</sup>	18.16%	18.16%	17.88%	11.08%	0.00%	2,224
Renal Endocrine Assoc <sup>1, 10</sup>	26.75%	26.75%	NA	44.01%	0.43%	694
SC Cranberry <sup>1, 10</sup>	10.89%	10.78%	10.24%	59.01%	0.95%	3,637
SC Edgeworth Commons <sup>1, 10, 13</sup>	18.12%	18.16%	NR	23.06%	4.55%	3,892
SC Ligonier <sup>11</sup>	3.32%	3.32%	4.86%	72.12%	4.30%	1,115
Shadyside SC <sup>1, 10</sup>	27.41%	27.41%	16.98%	11.84%	0.00%	315
South Hills Endoscopy Ctr <sup>1, 10</sup>	41.28%	41.30%	42.45%	20.26%	0.00%	10,038
Southwestern ASC <sup>1, 10, 13</sup>	13.55%	13.56%	NR	8.06%	19.85%	3,352
Southwestern Endoscopy <sup>1, 10</sup>	33.95%	33.95%	40.83%	23.51%	16.69%	10,288
Southwestern PA Eye SC <sup>1, 10, 13</sup>	18.72%	18.72%	23.46%	74.89%	4.53%	3,576
Spartan Health SC <sup>1, 10</sup>	6.96%	7.18%	7.19%	49.29%	9.32%	3,175
Three Rivers Endoscopy <sup>1, 10</sup>	40.99%	41.03%	45.12%	30.82%	0.61%	7,827
Tri-County Surgical <sup>1, 10</sup>	5.22%	5.22%	5.71%	26.50%	0.00%	859
Tri-State SC <sup>1, 10</sup>	30.37%	30.44%	33.46%	33.88%	8.81%	6,506
UPMC Mercy South Side SC <sup>4, 7</sup>	25.60%	25.60%	NA	15.09%	2.98%	4,982

See footnotes on page 24.

## Individual Ambulatory Surgery Center Data

Region/Ambulatory Surgery Center	Net Patient Revenue NPR (thousands)				3-yr Avg Change in NPR FY07-FY10	Total Operating Expenses TOE (thousands)				3-yr Avg Change in TOE FY07-FY10
	FY10	FY09	FY08	FY07		FY10	FY09	FY08	FY07	
<b>Statewide Average</b>	<b>\$3,882</b>	<b>\$3,774</b>	<b>\$3,622</b>	<b>\$3,358</b>	<b>5.21%</b>	<b>\$2,885</b>	<b>\$2,799</b>	<b>\$2,700</b>	<b>\$2,568</b>	<b>4.12%</b>
1 UPMC Monroeville SC <sup>10</sup>	\$7,909	\$6,463	\$6,179	\$8,262	-1.42%	\$7,072	\$6,197	\$6,797	\$7,468	-1.77%
1 UPMC South SC <sup>7</sup>	\$5,443	\$4,587	\$5,037	\$5,055	2.56%	\$3,839	\$3,498	\$3,751	\$3,587	2.35%
1 UPMC St. Margaret OP Ctr <sup>7</sup>	\$18,725	\$17,253	NR	NA	NA	\$10,718	\$8,986	NR	NA	NA
1 Waterfront SC <sup>1, 10</sup>	\$4,737	\$4,813	\$5,172	\$5,061	-2.14%	\$3,660	\$3,536	\$3,580	\$3,717	-0.51%
1 Western PA SC <sup>1, 10</sup>	\$7,591	\$7,307	\$7,187	\$7,303	1.31%	\$5,828	\$5,626	\$5,733	\$5,423	2.49%
1 Zitelli Brodland Central <sup>1, 10</sup>	\$1,535	\$1,238	\$878	\$806	30.14%	\$1,535	\$1,238	\$878	\$806	30.15%
1 Zitelli Brodland South <sup>1, 10</sup>	\$1,506	\$1,150	\$859	\$788	30.38%	\$1,506	\$1,150	\$859	\$787	30.42%
<b>Region 2 Average</b>	<b>\$4,294</b>	<b>\$4,069</b>	<b>\$4,550</b>	<b>\$5,389</b>	<b>-6.77%</b>	<b>\$3,549</b>	<b>\$3,413</b>	<b>\$3,661</b>	<b>\$4,175</b>	<b>-5.00%</b>
2 Community SC <sup>10, 13</sup>	\$1,237	\$1,157	\$826	NA	NA	\$459	\$852	\$709	NA	NA
2 Hamot SC <sup>10</sup>	\$12,684	\$12,588	\$11,882	\$10,707	6.16%	\$10,822	\$10,504	\$9,593	\$8,637	8.43%
2 Laurel Laser/Brookville <sup>1, 7, 10</sup>	\$2,777	\$2,823	\$2,552	\$2,755	0.26%	\$2,154	\$2,080	\$2,119	\$2,161	-0.11%
2 Lawrence County SC <sup>1, 3, 10</sup>	\$1,058	\$896	\$907	\$1,159	-2.91%	\$915	\$745	\$824	\$1,080	-5.09%
2 Pine Grove ASC <sup>1, 3, 10, 13</sup>	\$2,151	NR	\$1,297	NA	NA	\$2,305	NR	\$1,911	NA	NA
2 Regional ASC <sup>2, 10</sup>	\$720	\$2,807	\$3,065	\$2,569	NA	\$559	\$1,941	\$1,938	\$1,682	NA
2 Saint Vincent Endoscopy <sup>1, 10</sup>	\$1,806	\$1,569	NA	NA	NA	\$1,560	\$1,446	NA	NA	NA
2 Saint Vincent SC Erie <sup>1</sup>	\$11,905	\$11,264	\$10,835	\$9,990	6.39%	\$9,550	\$8,831	\$8,552	\$8,151	5.72%
2 Surgery & Laser <sup>1, 10</sup>	\$1,832	\$2,341	\$2,991	\$3,427	-15.51%	\$1,517	\$1,615	\$1,914	\$2,032	-8.45%
2 Village SC <sup>1, 10</sup>	\$6,770	\$6,615	\$6,598	\$7,112	-1.60%	\$5,649	\$5,437	\$5,386	\$5,479	1.04%
<b>Region 3 Average</b>	<b>\$4,035</b>	<b>\$3,716</b>	<b>\$3,230</b>	<b>\$3,646</b>	<b>3.56%</b>	<b>\$3,308</b>	<b>\$3,002</b>	<b>\$2,582</b>	<b>\$2,921</b>	<b>4.42%</b>
3 Allegheny Reg Endoscopy <sup>1, 10</sup>	\$4,181	\$3,687	\$3,616	\$3,320	8.64%	\$2,170	\$1,852	\$1,692	\$1,722	8.67%
3 Allegheny SC <sup>1, 10</sup>	\$2,723	\$2,513	\$2,589	\$2,059	10.75%	\$1,186	\$1,271	\$1,269	\$997	6.33%
3 Altoona Regional SC	\$11,868	\$10,637	\$10,453	\$10,974	2.71%	\$8,999	\$8,683	\$8,307	\$8,764	0.89%
3 Altoona Specialty Center <sup>1, 10, 13</sup>	\$4	\$3	\$5	NR	NR	\$2	\$27	\$38	NR	NR
3 Center for Surgical Arts <sup>1, 10, 13</sup>	\$1,516	\$932	\$1,121	\$869	24.81%	\$933	\$934	\$1,030	\$918	0.56%
3 Digestive Health/Indiana <sup>1, 10</sup>	\$1,615	\$1,601	\$1,544	\$1,468	3.33%	\$1,818	\$1,709	\$1,218	\$1,168	18.55%
3 Indiana AS Associates <sup>1, 10</sup>	\$3,361	\$3,295	\$3,643	\$3,691	-2.98%	\$2,613	\$2,432	\$2,273	\$2,165	6.90%
3 Laurel Laser & SC/Altoona <sup>1, 7, 10</sup>	\$2,149	\$1,868	\$1,908	NA	NA	\$1,541	\$1,322	\$1,529	NA	NA
3 Lee ASC <sup>3, 7</sup>	\$9,559	\$10,083	\$5,065	\$4,559	NA	\$10,486	\$9,083	\$5,827	\$4,848	NA
3 Ophthalmic Associates SC <sup>1, 10, 13</sup>	\$2,377	\$2,198	\$1,885	\$2,146	3.58%	\$1,601	\$1,651	\$1,510	\$1,971	-6.26%
3 Plastic Surgical Assoc <sup>1, 10</sup>	\$5,037	\$4,061	\$3,705	\$3,731	11.66%	\$5,042	\$4,065	\$3,712	\$3,736	11.65%
<b>Region 4 Average</b>	<b>\$4,984</b>	<b>\$4,735</b>	<b>\$4,364</b>	<b>\$3,241</b>	<b>17.92%</b>	<b>\$3,378</b>	<b>\$3,311</b>	<b>\$3,243</b>	<b>\$2,655</b>	<b>9.08%</b>
4 Betz Ophthalmology <sup>1, 10</sup>	\$408	\$506	\$916	\$621	-11.42%	\$283	\$286	\$298	\$262	2.71%
4 Brookpark SC <sup>1, 10, 13</sup>	\$292	NR	NR	\$92	72.03%	\$239	NR	NR	\$105	42.50%
4 Central PA Endoscopy Ctr <sup>1, 10</sup>	\$1,962	\$2,140	\$2,040	\$1,583	7.99%	\$1,999	\$2,140	\$2,040	\$1,424	13.47%
4 Endoscopy PA <sup>1, 10</sup>	\$1,608	\$1,617	\$1,678	\$1,739	-2.52%	\$1,793	\$1,805	\$1,843	\$1,968	-2.97%
4 Evangelical ASC <sup>1, 10</sup>	\$5,741	\$5,693	\$5,891	\$5,810	-0.40%	\$5,476	\$5,225	\$5,339	\$5,279	1.24%
4 Geisinger Endo & SC <sup>3, 7</sup>	\$2,947	\$2,324	\$2,522	\$1,574	NA	\$2,028	\$1,541	\$1,217	\$1,173	NA
4 Geisinger OP Woodbine	\$31,314	\$25,860	\$19,805	\$13,512	43.92%	\$17,387	\$16,040	\$13,613	\$11,242	18.22%
4 Lewisburg Plastic & Laser <sup>1, 10, 13</sup>	\$424	\$369	\$335	\$341	8.04%	\$333	\$357	\$277	\$360	-2.54%

See footnotes on page 24.

## Individual Ambulatory Surgery Center Data

Ambulatory Surgery Center	Operating Margin FY10	Total Margin FY10	3-yr Average Total Margin FY08-FY10	Medicare Share of NPR FY10	Medical Assistance Share of NPR FY10	Visits FY10
<b>Statewide Average</b>	<b>26.20%</b>	<b>26.29%</b>	<b>26.23%</b>	<b>24.52%</b>	<b>3.82%</b>	<b>4,040</b>
UPMC Monroeville SC <sup>10</sup>	10.80%	10.80%	2.45%	26.97%	2.31%	7,955
UPMC South SC <sup>7</sup>	34.08%	34.08%	31.63%	35.87%	2.07%	3,387
UPMC St. Margaret OP Ctr <sup>7</sup>	42.76%	42.76%	NR	24.69%	1.36%	11,612
Waterfront SC <sup>1, 10</sup>	22.77%	22.77%	26.91%	23.85%	2.75%	5,866
Western PA SC <sup>1, 10</sup>	22.69%	22.69%	22.24%	21.82%	1.68%	5,124
Zitelli Brodland Central <sup>1, 10</sup>	0.01%	0.01%	0.01%	70.81%	0.00%	3,471
Zitelli Brodland South <sup>1, 10</sup>	0.01%	0.01%	0.01%	62.82%	0.00%	3,610
<b>Region 2 Average</b>	<b>17.55%</b>	<b>17.66%</b>	<b>17.98%</b>	<b>30.99%</b>	<b>8.00%</b>	<b>4,864</b>
Community SC <sup>10, 13</sup>	62.88%	62.88%	38.03%	66.69%	1.42%	1,878
Hamot SC <sup>10</sup>	14.76%	14.76%	16.99%	22.22%	6.27%	16,958
Laurel Laser/Brookville <sup>1, 7, 10</sup>	22.44%	22.44%	22.23%	56.13%	2.20%	3,039
Lawrence County SC <sup>1, 3, 10</sup>	13.55%	13.55%	14.96%	76.31%	0.46%	1,095
Pine Grove ASC <sup>1, 3, 10, 13</sup>	-2.65%	-2.65%	NR	35.70%	4.49%	2,888
Regional ASC <sup>2, 10</sup>	22.25%	22.36%	32.77%	35.27%	3.35%	692
Saint Vincent Endoscopy <sup>1, 10</sup>	13.65%	13.65%	NA	19.72%	5.25%	3,261
Saint Vincent SC Erie <sup>1</sup>	19.78%	20.11%	21.16%	34.78%	14.41%	9,330
Surgery & Laser <sup>1, 10</sup>	17.19%	17.19%	29.56%	16.44%	3.25%	2,495
Village SC <sup>1, 10</sup>	16.56%	16.60%	17.68%	21.83%	8.33%	7,004
<b>Region 3 Average</b>	<b>18.48%</b>	<b>18.51%</b>	<b>19.64%</b>	<b>21.94%</b>	<b>4.27%</b>	<b>4,506</b>
Allegheny Reg Endoscopy <sup>1, 10</sup>	48.10%	48.11%	50.30%	19.56%	5.10%	7,383
Allegheny SC <sup>1, 10</sup>	56.43%	56.47%	52.47%	20.90%	6.92%	4,247
Altoona Regional SC	24.17%	24.17%	21.14%	15.97%	4.61%	5,842
Altoona Specialty Center <sup>1, 10, 13</sup>	56.53%	56.53%	-6.91%	0.00%	0.00%	2
Center for Surgical Arts <sup>1, 10, 13</sup>	38.44%	38.44%	18.84%	21.61%	0.50%	778
Digestive Health/Indiana <sup>1, 10</sup>	-12.58%	-12.46%	0.70%	15.26%	0.00%	1,644
Indiana AS Associates <sup>1, 10</sup>	27.68%	27.68%	34.09%	28.99%	3.77%	3,119
Laurel Laser & SC/Altoona <sup>1, 7, 10</sup>	28.29%	28.29%	25.88%	40.05%	1.02%	2,092
Lee ASC <sup>3, 7</sup>	-9.69%	-9.69%	-2.78%	21.21%	7.21%	5,227
Ophthalmic Associates SC <sup>1, 10, 13</sup>	32.66%	32.75%	26.46%	57.15%	2.00%	3,031
Plastic Surgical Assoc <sup>1, 10</sup>	-0.10%	0.01%	-0.05%	13.43%	1.07%	16,197
<b>Region 4 Average</b>	<b>33.57%</b>	<b>34.07%</b>	<b>30.60%</b>	<b>19.43%</b>	<b>2.05%</b>	<b>3,886</b>
Betz Ophthalmology <sup>1, 10</sup>	30.61%	30.61%	52.61%	59.82%	0.00%	569
Brookpark SC <sup>1, 10, 13</sup>	18.37%	18.37%	NR	21.42%	0.00%	252
Central PA Endoscopy Ctr <sup>1, 10</sup>	-1.90%	-1.90%	-0.60%	29.85%	0.00%	4,403
Endoscopy PA <sup>1, 10</sup>	0.83%	0.84%	1.34%	33.98%	6.56%	3,380
Evangelical ASC <sup>1, 10</sup>	4.61%	4.71%	7.63%	10.74%	1.70%	5,951
Geisinger Endo & SC <sup>3, 7</sup>	32.70%	32.70%	40.14%	13.72%	2.41%	4,639
Geisinger OP Woodbine	44.47%	45.40%	38.65%	15.50%	1.97%	9,758
Lewisburg Plastic & Laser <sup>1, 10, 13</sup>	21.52%	21.52%	14.35%	13.49%	0.00%	346

See footnotes on page 24.



## Individual Ambulatory Surgery Center Data

Region/Ambulatory Surgery Center	Net Patient Revenue NPR (thousands)				3-yr Avg Change in NPR FY07-FY10	Total Operating Expenses TOE (thousands)				3-yr Avg Change in TOE FY07-FY10
	FY10	FY09	FY08	FY07		FY10	FY09	FY08	FY07	
<b>Statewide Average</b>	<b>\$3,882</b>	<b>\$3,774</b>	<b>\$3,622</b>	<b>\$3,358</b>	<b>5.21%</b>	<b>\$2,885</b>	<b>\$2,799</b>	<b>\$2,700</b>	<b>\$2,568</b>	<b>4.12%</b>
4 Mifflin County Com SC <sup>1, 10</sup>	\$809	\$752	\$948	\$850	-1.61%	\$775	\$835	\$825	\$863	-3.38%
4 Mount Nittany SC <sup>13</sup>	\$13,157	\$12,393	\$9,814	\$7,928	21.98%	\$8,188	\$7,386	\$6,885	\$6,195	10.73%
4 SC Central PA <sup>1, 7, 10, 13</sup>	\$3,945	\$4,294	\$3,565	\$2,766	14.20%	\$2,942	\$2,985	\$2,563	\$1,775	21.92%
4 Susquehanna Endoscopy <sup>3, 10, 13</sup>	\$1,795	\$136	NA	NA	NA	\$1,346	\$173	NA	NA	NA
4 Susquehanna SC <sup>10</sup>	\$1,113	\$950	\$996	\$868	9.41%	\$1,096	\$821	\$911	\$792	12.78%
4 UOC Surgical Services <sup>1, 10</sup>	\$4,259	\$4,518	\$3,852	\$4,453	-1.45%	\$3,403	\$3,453	\$3,111	\$3,072	3.59%
<b>Region 5 Average</b>	<b>\$4,387</b>	<b>\$4,131</b>	<b>\$3,895</b>	<b>\$3,592</b>	<b>7.38%</b>	<b>\$3,163</b>	<b>\$3,066</b>	<b>\$2,924</b>	<b>\$2,770</b>	<b>4.73%</b>
5 Apple Hill SC <sup>10</sup>	\$12,444	\$11,705	\$11,084	\$11,029	4.28%	\$9,960	\$9,308	\$8,982	\$8,546	5.52%
5 Carlisle Endoscopy <sup>1, 10</sup>	\$2,425	\$2,502	\$2,351	\$2,330	1.36%	\$2,426	\$2,504	\$2,357	\$2,313	1.63%
5 Carlisle Outpatient SC <sup>1, 3, 7, 10, 13</sup>	\$4,161	\$2,014	\$2,046	\$3,868	2.52%	\$1,597	\$1,168	\$1,163	\$3,701	-18.95%
5 Center for Spine Care <sup>1, 7, 10, 13</sup>	\$803	\$842	\$963	\$1,067	-8.26%	\$706	\$794	\$797	\$836	-5.20%
5 Center Reproductive <sup>1, 10</sup>	\$1,490	\$1,499	\$1,346	\$1,313	4.50%	\$1,194	\$1,213	\$1,091	\$1,065	4.05%
5 Chambersburg Endoscopy <sup>1, 10</sup>	\$2,213	\$2,511	\$2,426	\$2,338	-1.79%	\$1,494	\$1,547	\$1,533	\$1,590	-2.02%
5 Crossroads SC <sup>1, 10</sup>	\$3,711	\$3,709	NA	NA	NA	\$4,786	\$4,705	NA	NA	NA
5 Cumberland SC <sup>1, 10</sup>	\$659	\$1,244	\$1,125	\$1,081	-13.01%	\$444	\$699	\$579	\$952	-17.79%
5 Digestive Disease Inst <sup>1, 10</sup>	\$2,618	\$2,566	\$2,633	\$2,455	2.21%	\$2,615	\$2,575	\$2,698	\$2,429	2.55%
5 East York Eye SC <sup>1, 3, 10, 13</sup>	\$17	\$119	\$45	NA	NA	\$196	\$285	\$302	NA	NA
5 Elmwood Endoscopy Center <sup>1, 10</sup>	\$738	\$757	\$715	\$669	3.43%	\$734	\$756	\$724	\$726	0.33%
5 Endoscopy Ctr/Central PA <sup>1, 10</sup>	\$1,182	\$1,277	\$1,273	\$1,147	1.02%	\$1,102	\$1,115	\$1,074	\$995	3.59%
5 Eyes of York SC <sup>1, 10</sup>	\$1,415	\$1,392	\$1,092	\$998	13.91%	\$1,004	\$1,102	\$1,049	\$917	3.16%
5 Foot and Ankle SC <sup>1, 10, 13</sup>	\$2,742	\$4,047	\$3,645	\$2,156	9.08%	\$1,445	\$1,779	\$1,607	\$1,318	3.20%
5 Grandview Surgery & Laser <sup>1, 10, 13</sup>	\$8,579	\$7,489	\$6,838	\$5,910	15.06%	\$5,368	\$4,894	\$4,820	\$4,180	9.48%
5 GSH Outpatient SC <sup>7</sup>	\$4,928	\$4,283	\$2,799	\$1,059	121.72%	\$1,973	\$2,139	\$1,733	\$1,857	2.07%
5 Hanover SC <sup>2, 10, 13</sup>	\$1,873	\$3,861	\$3,438	\$2,938	NA	\$1,925	\$3,254	\$3,196	\$2,948	NA
5 Harrisburg Endoscopy & SC <sup>1, 10</sup>	\$3,764	\$3,716	\$3,748	\$3,753	0.09%	\$3,775	\$3,713	\$3,748	\$3,752	0.20%
5 Harrisburg Pain Mgmt <sup>1, 10</sup>	\$3,233	\$3,171	\$2,895	\$2,318	13.16%	\$2,894	\$2,787	\$2,602	\$2,042	13.91%
5 Hershey Endoscopy Center <sup>1, 10</sup>	\$2,989	\$2,903	\$2,844	\$2,414	7.95%	\$1,900	\$1,899	\$1,946	\$1,685	4.27%
5 Hershey Outpatient SC <sup>1, 10</sup>	\$7,736	\$7,422	\$7,829	\$7,016	3.42%	\$7,181	\$7,465	\$7,270	\$7,031	0.71%
5 Lancaster Gastro Center <sup>1, 10</sup>	\$4,983	\$5,079	\$5,022	\$4,564	3.06%	\$2,142	\$1,988	\$2,047	\$1,923	3.79%
5 Leader SC <sup>1, 10</sup>	\$1,406	\$1,392	\$1,330	\$1,119	8.56%	\$675	\$654	\$687	\$597	4.34%
5 Ludwick Laser & SC <sup>1, 10</sup>	\$1,801	\$1,855	\$1,314	NA	NA	\$1,196	\$1,392	\$1,073	NA	NA
5 Memorial Outpatient Endo <sup>3</sup>	\$1,081	\$1,052	NA	NA	NA	\$628	\$728	NA	NA	NA
5 Mid-Atlantic Gastro Ctr <sup>1, 10</sup>	\$2,561	\$2,698	\$2,972	\$3,064	-5.47%	\$1,348	\$1,383	\$1,415	\$1,652	-6.13%
5 Mid-Atlantic Gastro II <sup>1, 3, 10</sup>	\$2,395	\$2,380	\$2,384	\$872	NA	\$1,758	\$1,522	\$1,518	\$632	NA
5 Neurospine Center <sup>1, 3, 10, 13</sup>	\$2,802	\$65	NA	NA	NA	\$2,488	\$1,478	NA	NA	NA
5 North Pointe SC <sup>1, 10</sup>	\$6,224	\$4,786	\$2,426	NA	NA	\$4,350	\$3,973	\$2,744	NA	NA
5 Ophthalmology & Surgical <sup>1, 10</sup>	\$4,148	\$3,585	\$3,398	\$2,771	16.56%	\$2,899	\$2,552	\$2,491	\$1,908	17.32%
5 Ophthalmology SC <sup>1, 10, 13</sup>	\$2,316	\$2,346	\$2,411	\$3,153	-8.85%	\$2,465	\$2,541	\$2,514	\$2,562	-1.26%
5 OSS Ambulatory SC <sup>1, 7, 10</sup>	\$12,854	\$12,802	\$12,556	\$8,223	18.77%	\$8,002	\$8,537	\$7,346	\$4,949	20.56%

See footnotes on page 24.



## Individual Ambulatory Surgery Center Data

Ambulatory Surgery Center	Operating Margin FY10	Total Margin FY10	3-yr Average Total Margin FY08-FY10	Medicare Share of NPR FY10	Medical Assistance Share of NPR FY10	Visits FY10
<b>Statewide Average</b>	<b>26.20%</b>	<b>26.29%</b>	<b>26.23%</b>	<b>24.52%</b>	<b>3.82%</b>	<b>4,040</b>
Mifflin County Com SC <sup>1,10</sup>	4.09%	4.09%	2.12%	52.43%	7.97%	1,193
Mount Nittany SC <sup>13</sup>	37.76%	37.76%	36.57%	21.36%	1.94%	6,146
SC Central PA <sup>1,7,10,13</sup>	41.87%	41.87%	38.24%	44.10%	1.28%	7,579
Susquehanna Endoscopy <sup>3,10,13</sup>	24.99%	24.99%	NA	24.24%	3.00%	4,718
Susquehanna SC <sup>10</sup>	4.34%	4.34%	8.52%	19.84%	0.60%	2,117
UOC Surgical Services <sup>1,10</sup>	20.10%	20.10%	21.09%	10.95%	2.62%	3,357
<b>Region 5 Average</b>	<b>27.96%</b>	<b>28.04%</b>	<b>26.47%</b>	<b>20.89%</b>	<b>3.06%</b>	<b>4,385</b>
Apple Hill SC <sup>10</sup>	19.96%	20.18%	20.01%	22.28%	3.35%	10,465
Carlisle Endoscopy <sup>1,10</sup>	-0.05%	0.00%	0.00%	26.95%	0.76%	5,807
Carlisle Outpatient SC <sup>1,3,7,10,13</sup>	61.62%	61.62%	52.22%	26.49%	2.09%	1,316
Center for Spine Care <sup>1,7,10,13</sup>	15.50%	15.50%	13.01%	9.50%	0.00%	1,065
Center Reproductive <sup>1,10</sup>	19.88%	19.88%	19.30%	0.00%	0.00%	1,352
Chambersburg Endoscopy <sup>1,10</sup>	32.52%	32.52%	36.04%	26.50%	2.82%	4,726
Crossroads SC <sup>1,10</sup>	-29.16%	-29.01%	NA	27.55%	4.86%	4,329
Cumberland SC <sup>1,10</sup>	33.99%	34.21%	43.91%	4.11%	0.00%	552
Digestive Disease Inst <sup>1,10</sup>	0.13%	0.13%	-0.84%	5.32%	0.00%	5,060
East York Eye SC <sup>1,3,10,13</sup>	-1,073.66%	-1,073.66%	-334.41%	53.41%	2.03%	39
Elmwood Endoscopy Center <sup>1,10</sup>	0.58%	0.58%	-0.17%	18.72%	4.00%	1,660
Endoscopy Ctr/Central PA <sup>1,10</sup>	6.77%	6.77%	11.79%	18.99%	0.00%	2,456
Eyes of York SC <sup>1,10</sup>	29.05%	29.05%	19.10%	66.74%	0.00%	1,842
Foot and Ankle SC <sup>1,10,13</sup>	47.32%	47.32%	53.70%	9.09%	2.00%	900
Grandview Surgery & Laser <sup>1,10,13</sup>	37.93%	37.93%	34.65%	14.22%	1.13%	5,518
GSH Outpatient SC <sup>7</sup>	59.97%	59.97%	51.34%	19.23%	3.44%	3,429
Hanover SC <sup>2,10,13</sup>	-2.81%	-2.77%	8.72%	24.07%	1.04%	1,468
Harrisburg Endoscopy & SC <sup>1,10</sup>	0.07%	0.07%	0.06%	23.80%	0.71%	8,617
Harrisburg Pain Mgmt <sup>1,10</sup>	10.49%	10.49%	10.92%	17.02%	3.66%	6,086
Hershey Endoscopy Center <sup>1,10</sup>	36.43%	36.43%	34.26%	21.24%	0.00%	3,596
Hershey Outpatient SC <sup>1,10</sup>	7.19%	7.19%	6.33%	18.07%	12.39%	6,936
Lancaster Gastro Center <sup>1,10</sup>	57.01%	57.02%	59.05%	15.63%	0.38%	8,787
Leader SC <sup>1,10</sup>	51.99%	51.99%	51.17%	15.70%	0.00%	1,635
Ludwick Laser & SC <sup>1,10</sup>	33.61%	33.61%	26.35%	67.96%	2.81%	1,756
Memorial Outpatient Endo <sup>3</sup>	41.89%	41.89%	NA	19.92%	1.74%	2,383
Mid-Atlantic Gastro Ctr <sup>1,10</sup>	47.35%	47.35%	49.63%	18.07%	0.04%	4,583
Mid-Atlantic Gastro II <sup>1,3,10</sup>	26.62%	26.62%	32.99%	18.20%	0.03%	4,341
Neurospine Center <sup>1,3,10,13</sup>	11.25%	11.25%	NA	0.35%	0.57%	449
North Pointe SC <sup>1,10</sup>	30.11%	30.54%	18.22%	6.68%	1.15%	2,171
Ophthalmology & Surgical <sup>1,10</sup>	30.10%	30.11%	28.64%	52.73%	3.05%	4,186
Ophthalmology SC <sup>1,10,13</sup>	-6.45%	-6.41%	-6.16%	53.30%	2.60%	2,398
OSS Ambulatory SC <sup>1,7,10</sup>	37.78%	37.78%	37.51%	12.20%	3.95%	11,694

See footnotes on page 24.

## Individual Ambulatory Surgery Center Data

Region/Ambulatory Surgery Center	Net Patient Revenue NPR (thousands)				3-yr Avg Change in NPR FY07-FY10	Total Operating Expenses TOE (thousands)				3-yr Avg Change in TOE FY07-FY10
	FY10	FY09	FY08	FY07		FY10	FY09	FY08	FY07	
<b>Statewide Average</b>	<b>\$3,882</b>	<b>\$3,774</b>	<b>\$3,622</b>	<b>\$3,358</b>	<b>5.21%</b>	<b>\$2,885</b>	<b>\$2,799</b>	<b>\$2,700</b>	<b>\$2,568</b>	<b>4.12%</b>
5 PA Eye SC <sup>1,10</sup>	\$2,049	\$2,060	\$1,874	\$1,844	3.69%	\$1,512	\$1,633	\$1,438	\$1,372	3.40%
5 Physicians' SC Lancaster <sup>1,10</sup>	\$22,048	\$18,446	\$8,638	NA	NA	\$10,400	\$9,249	\$6,798	NA	NA
5 PRISM Center <sup>1,7,10</sup>	\$1,605	\$1,701	\$1,841	\$1,514	2.00%	\$1,424	\$1,438	\$1,540	\$1,304	3.06%
5 SC Lancaster <sup>1,10</sup>	\$9,232	\$8,994	\$10,236	\$9,445	-0.75%	\$7,097	\$7,055	\$7,225	\$6,896	0.97%
5 SC of Lebanon <sup>1,10</sup>	\$6,811	\$7,516	\$8,355	\$7,092	-1.32%	\$3,915	\$4,162	\$3,986	\$4,195	-2.23%
5 SC York	\$2,993	\$3,104	\$4,158	\$4,548	-11.40%	\$3,327	\$3,308	\$4,104	\$4,242	-7.19%
5 Summit SC <sup>10</sup>	\$4,217	\$3,675	\$4,274	\$4,577	-2.62%	\$3,541	\$3,428	\$3,890	\$3,989	-3.74%
5 Susquehanna Valley SC <sup>1,10</sup>	\$9,727	\$10,025	\$10,207	\$9,615	0.39%	\$8,095	\$8,204	\$8,120	\$8,271	-0.71%
5 Valley View SC <sup>1,10</sup>	\$1,068	\$1,121	\$1,159	\$1,017	1.67%	\$695	\$1,095	\$1,133	\$1,015	-10.51%
5 Wellspan SC <sup>4,7</sup>	\$3,311	NA	NA	NA	NA	\$2,671	NA	NA	NA	NA
5 West Shore Endoscopy <sup>1,10</sup>	\$13,302	\$12,485	\$11,500	\$11,767	4.35%	\$8,738	\$8,055	\$7,758	\$7,230	6.95%
5 West Shore SC <sup>1,10</sup>	\$7,799	\$8,144	\$8,002	\$8,294	-1.99%	\$6,336	\$6,145	\$5,950	\$6,014	1.79%
5 York Endoscopy <sup>1,10</sup>	\$3,606	\$3,019	\$2,985	\$2,287	19.21%	\$3,301	\$2,541	\$2,017	\$1,728	30.33%
5 York Pain Specialists <sup>1,10</sup>	\$1,756	\$1,798	NR	NR	NR	\$1,788	\$1,551	NR	NR	NR
<b>Region 6 Average</b>	<b>\$3,296</b>	<b>\$3,653</b>	<b>\$3,676</b>	<b>\$3,351</b>	<b>-0.55%</b>	<b>\$2,382</b>	<b>\$2,606</b>	<b>\$2,543</b>	<b>\$2,266</b>	<b>1.71%</b>
6 Angelina Theresa Bucci SC <sup>1,10</sup>	\$1,321	\$1,648	\$1,308	\$1,308	0.32%	\$1,091	\$1,324	\$1,061	\$1,123	-0.93%
6 Center for Advanced Surg <sup>1,3,10</sup>	\$4,662	\$4,386	\$3,504	\$1,464	NA	\$3,563	\$3,548	\$3,067	\$1,700	NA
6 Center Same Day Surgery <sup>1,2,7,10</sup>	\$1,952	\$4,336	\$4,313	\$4,339	NA	\$485	\$3,252	\$3,182	\$3,185	NA
6 Eynon SC <sup>1,10</sup>	\$1,631	\$1,805	NR	\$2,244	-9.10%	\$994	\$967	NR	\$1,020	-0.84%
6 Gateway SC <sup>1,2,10</sup>	\$1,590	\$3,225	\$3,559	NA	NA	\$719	\$1,368	\$1,211	NA	NA
6 Guthrie Clinic <sup>7</sup>	\$3,494	\$3,637	\$3,633	\$3,418	0.75%	\$3,158	\$3,164	\$2,971	\$2,580	7.46%
6 Hazleton ASC <sup>1,10</sup>	\$1,651	\$1,778	\$1,740	\$1,514	3.01%	\$1,094	\$829	\$736	\$1,243	-4.00%
6 Hazleton Endoscopy <sup>1,10</sup>	\$770	\$822	\$851	\$913	-5.23%	\$773	\$821	\$851	\$914	-5.17%
6 Kingston Ophthalmology <sup>1,10</sup>	\$4,734	\$4,993	\$4,730	\$4,323	3.18%	\$2,738	\$2,607	\$2,589	\$2,249	7.24%
6 Mountain Laurel SC <sup>1,10</sup>	\$2,217	\$2,233	\$1,936	\$1,225	26.98%	\$1,511	\$1,465	\$1,429	\$818	28.22%
6 NEI AS <sup>1,10</sup>	\$4,996	\$6,693	\$6,238	\$4,551	3.26%	\$4,467	\$5,913	\$5,385	\$3,899	4.86%
6 North East SC <sup>1,10</sup>	\$5,748	\$5,952	\$5,708	\$6,679	-4.64%	\$5,663	\$5,471	\$5,395	\$4,916	5.06%
6 Northeast Regional SC <sup>1,10</sup>	\$2,964	\$3,928	\$4,614	\$5,122	-14.05%	\$1,380	\$1,533	\$1,630	\$1,611	-4.79%
6 Pocono ASC <sup>1,10,13</sup>	\$5,749	\$5,424	\$5,402	\$4,975	5.19%	\$4,439	\$4,202	\$3,945	\$3,685	6.83%
6 Renaissance Center <sup>1,10</sup>	\$715	\$1,132	\$948	\$661	2.69%	\$776	\$1,157	\$968	\$822	-1.85%
6 Riverview ASC <sup>1,10</sup>	\$5,012	\$4,815	\$4,411	\$4,262	5.87%	\$3,524	\$3,458	\$2,890	\$2,618	11.53%
6 Same Day Geisinger South	\$5,001	\$4,329	\$5,212	\$5,043	-0.28%	\$4,341	\$3,911	\$4,054	\$4,070	2.21%
6 Scranton Endoscopy <sup>1,10</sup>	\$4,953	\$4,989	\$4,913	\$4,825	0.88%	\$1,772	\$1,725	\$1,732	\$1,664	2.16%
6 Surgical Specialty NE PA <sup>1,10</sup>	\$3,459	\$3,272	\$3,147	\$3,444	0.15%	\$2,773	\$2,807	\$2,680	\$2,668	1.31%
<b>Region 7 Average</b>	<b>\$3,776</b>	<b>\$3,940</b>	<b>\$4,128</b>	<b>\$3,574</b>	<b>1.88%</b>	<b>\$2,460</b>	<b>\$2,527</b>	<b>\$2,691</b>	<b>\$2,454</b>	<b>0.08%</b>
7 Berks Ambulatory SC <sup>1,10</sup>	\$868	\$974	\$1,232	\$1,191	-9.04%	\$732	\$696	\$900	\$948	-7.61%
7 Berks Digestive Health <sup>1,10</sup>	\$6,091	\$6,295	\$5,855	\$5,590	2.99%	\$3,235	\$3,210	\$2,919	\$2,949	3.23%
7 Berks Urologic SC <sup>10</sup>	\$3,582	\$3,180	\$2,582	\$2,859	8.43%	\$2,191	\$2,065	\$1,651	\$1,825	6.69%
7 Berkshire Eye SC <sup>1,10</sup>	\$2,828	\$3,255	\$3,036	\$2,754	0.90%	\$1,702	\$1,859	\$1,772	\$1,682	0.39%

See footnotes on page 24.

## Individual Ambulatory Surgery Center Data

Ambulatory Surgery Center	Operating Margin FY10	Total Margin FY10	3-yr Average Total Margin FY08-FY10	Medicare Share of NPR FY10	Medical Assistance Share of NPR FY10	Visits FY10
<b>Statewide Average</b>	<b>26.20%</b>	<b>26.29%</b>	<b>26.23%</b>	<b>24.52%</b>	<b>3.82%</b>	<b>4,040</b>
PA Eye SC <sup>1, 10</sup>	26.21%	26.28%	23.60%	33.89%	0.69%	6,284
Physicians' SC Lancaster <sup>1, 10</sup>	52.85%	52.85%	46.20%	18.12%	1.60%	11,463
PRISM Center <sup>1, 7, 10</sup>	11.28%	11.28%	14.47%	27.58%	1.92%	2,346
SC Lancaster <sup>1, 10</sup>	23.13%	24.28%	25.64%	24.93%	10.25%	6,633
SC of Lebanon <sup>1, 10</sup>	42.53%	42.57%	46.85%	28.20%	4.18%	5,351
SC York	-11.14%	-10.47%	-4.24%	38.68%	15.91%	2,442
Summit SC <sup>10</sup>	16.02%	16.24%	10.88%	15.23%	6.60%	3,033
Susquehanna Valley SC <sup>1, 10</sup>	16.77%	16.80%	18.58%	15.26%	0.41%	9,386
Valley View SC <sup>1, 10</sup>	34.92%	34.94%	12.74%	66.02%	0.00%	1,406
Wellspan SC <sup>4, 7</sup>	19.32%	19.32%	NA	35.45%	1.55%	2,891
West Shore Endoscopy <sup>1, 10</sup>	34.31%	34.31%	34.17%	10.60%	1.42%	8,618
West Shore SC <sup>1, 10</sup>	18.75%	18.59%	23.06%	25.09%	3.00%	8,188
York Endoscopy <sup>1, 10</sup>	8.87%	8.87%	18.78%	24.62%	3.02%	7,975
York Pain Specialists <sup>1, 10</sup>	-1.81%	-1.80%	NR	34.07%	2.81%	4,114
<b>Region 6 Average</b>	<b>29.42%</b>	<b>29.48%</b>	<b>30.76%</b>	<b>29.20%</b>	<b>4.61%</b>	<b>4,292</b>
Angelina Theresa Bucci SC <sup>1, 10</sup>	17.37%	17.37%	18.73%	43.63%	2.60%	1,568
Center for Advanced Surg <sup>1, 3, 10</sup>	23.57%	23.67%	19.26%	12.45%	3.65%	3,205
Center Same Day Surgery <sup>1, 2, 7, 10</sup>	75.17%	75.17%	35.06%	10.46%	3.00%	698
Eynon SC <sup>1, 10</sup>	39.06%	39.06%	NR	18.04%	2.84%	2,975
Gateway SC <sup>1, 2, 10</sup>	54.76%	54.76%	60.62%	29.74%	2.29%	2,896
Guthrie Clinic <sup>7</sup>	17.27%	17.87%	20.56%	51.71%	6.21%	6,615
Hazleton ASC <sup>1, 10</sup>	33.74%	33.74%	48.56%	40.76%	2.77%	2,371
Hazleton Endoscopy <sup>1, 10</sup>	-0.38%	-0.38%	-0.06%	24.25%	0.31%	1,999
Kingston Ophthalmology <sup>1, 10</sup>	42.17%	42.20%	45.14%	51.41%	2.68%	5,060
Mountain Laurel SC <sup>1, 10</sup>	31.86%	31.86%	31.09%	28.12%	6.19%	4,927
NEI AS <sup>1, 10</sup>	10.59%	10.59%	12.09%	73.16%	3.90%	6,088
North East SC <sup>1, 10</sup>	18.25%	18.25%	21.65%	11.65%	4.04%	6,891
Northeast Regional SC <sup>1, 10</sup>	53.53%	53.53%	60.57%	30.62%	4.95%	5,129
Pocono ASC <sup>1, 10, 13</sup>	22.78%	22.99%	24.26%	21.81%	1.36%	7,876
Renaissance Center <sup>1, 10</sup>	-8.60%	-8.60%	-3.80%	5.73%	0.00%	931
Riverview ASC <sup>1, 10</sup>	29.68%	29.68%	30.71%	18.57%	2.29%	5,864
Same Day Geisinger South	13.31%	13.31%	15.41%	23.97%	18.00%	3,142
Scranton Endoscopy <sup>1, 10</sup>	64.22%	64.23%	64.81%	17.32%	0.00%	9,478
Surgical Specialty NE PA <sup>1, 10</sup>	19.84%	19.84%	16.40%	26.67%	9.91%	3,842
<b>Region 7 Average</b>	<b>35.02%</b>	<b>35.04%</b>	<b>35.36%</b>	<b>24.17%</b>	<b>1.93%</b>	<b>3,973</b>
Berks Ambulatory SC <sup>1, 10</sup>	15.69%	15.69%	25.41%	3.68%	0.00%	531
Berks Digestive Health <sup>1, 10</sup>	48.12%	48.14%	49.74%	18.80%	0.06%	11,040
Berks Urologic SC <sup>10</sup>	39.45%	39.45%	37.42%	38.35%	0.97%	7,563
Berkshire Eye SC <sup>1, 10</sup>	39.95%	39.95%	41.65%	42.67%	0.80%	3,001

See footnotes on page 24.

## Individual Ambulatory Surgery Center Data

Region/Ambulatory Surgery Center	Net Patient Revenue NPR (thousands)				3-yr Avg Change in NPR FY07-FY10	Total Operating Expenses TOE (thousands)				3-yr Avg Change in TOE FY07-FY10
	FY10	FY09	FY08	FY07		FY10	FY09	FY08	FY07	
<b>Statewide Average</b>	<b>\$3,882</b>	<b>\$3,774</b>	<b>\$3,622</b>	<b>\$3,358</b>	<b>5.21%</b>	<b>\$2,885</b>	<b>\$2,799</b>	<b>\$2,700</b>	<b>\$2,568</b>	<b>4.12%</b>
7 Bethlehem Endoscopy <sup>1,10</sup>	\$2,480	\$2,391	\$1,872	\$2,072	6.56%	\$1,397	\$1,362	\$1,208	\$1,124	8.11%
7 Center for Specialized <sup>1,10</sup>	\$5,369	\$6,071	\$6,937	\$4,846	3.60%	\$3,861	\$4,015	\$4,090	\$3,265	6.09%
7 College Heights Endoscopy <sup>1,10,13</sup>	\$5,484	\$5,612	\$5,188	\$4,693	5.62%	\$2,380	\$2,280	\$2,178	\$2,182	3.03%
7 Eastern PA Endoscopy <sup>1,10</sup>	\$4,454	\$4,430	\$4,394	\$4,402	0.40%	\$2,654	\$2,231	\$2,101	\$1,933	12.42%
7 Fairgrounds SC <sup>2,10</sup>	\$3,904	\$6,724	\$5,827	\$6,854	NA	\$3,416	\$6,441	\$6,348	\$7,705	NA
7 Keystone SC <sup>1,10</sup>	\$639	\$516	\$489	\$484	10.67%	\$554	\$558	\$424	\$453	7.43%
7 Mahoning Valley ASC <sup>1,10</sup>	\$1,308	\$1,578	\$1,064	\$1,068	7.51%	\$829	\$768	\$628	\$648	9.32%
7 PA Eye & Ear SC <sup>10</sup>	\$4,789	\$4,574	\$4,554	\$3,942	7.17%	\$3,537	\$3,557	\$3,444	\$2,976	6.27%
7 Premier Podiatric SC <sup>1,3,10</sup>	\$365	\$144	\$456	\$381	-1.47%	\$281	\$146	\$402	\$337	-5.61%
7 Progressive Laser Surgi <sup>1,10</sup>	\$1,251	\$1,052	\$725	\$586	37.83%	\$823	\$715	\$561	\$546	16.93%
7 Progressive Surgical Inst <sup>1,10</sup>	\$1,312	\$1,462	\$1,405	\$1,462	-3.41%	\$812	\$773	\$739	\$786	1.12%
7 Proserpi-Schlechter <sup>1,10</sup>	\$180	\$204	\$251	\$382	-17.62%	\$189	\$219	\$253	\$396	-17.37%
7 Reading ASC <sup>1,10</sup>	\$8,491	\$8,650	\$8,951	\$9,766	-4.35%	\$4,732	\$4,334	\$4,591	\$4,566	1.21%
7 Reading Endoscopy Center <sup>1,10</sup>	\$1,493	\$1,502	\$1,530	\$1,553	-1.28%	\$1,123	\$1,206	\$1,200	\$1,244	-3.23%
7 Reading SC/Spring Ridge <sup>1,10,13</sup>	\$18,255	\$16,769	\$14,059	\$13,064	13.24%	\$11,813	\$11,178	\$10,194	\$9,558	7.86%
7 SC of Allentown <sup>1,3,10,13</sup>	\$13,776	\$17,121	\$17,835	\$8,080	NA	\$9,623	\$10,662	\$10,624	\$5,900	NA
7 SC Pottsville <sup>1,10</sup>	\$3,705	\$4,239	\$3,977	\$2,762	11.38%	\$3,207	\$3,371	\$3,200	\$2,945	2.97%
7 Schuylkill Endoscopy <sup>1,10</sup>	\$3,585	\$3,658	\$3,648	\$3,407	1.75%	\$1,918	\$1,886	\$1,975	\$2,025	-1.75%
7 State Hill SC <sup>1,10</sup>	\$828	\$449	NA	NA	NA	\$602	\$449	NA	NA	NA
7 Twin Rivers Endoscopy <sup>1,10</sup>	\$3,148	\$3,196	\$3,060	\$2,355	11.22%	\$1,584	\$1,469	\$1,689	\$1,177	11.52%
7 Valley Access/Eastern PA <sup>1,10</sup>	\$1,614	\$1,661	NA	NA	NA	\$1,256	\$1,312	NA	NA	NA
7 Valley Access/Lehigh <sup>1,10</sup>	\$1,104	\$1,038	NA	NA	NA	\$825	\$800	NA	NA	NA
7 Valley Eye SC <sup>1,10</sup>	\$4,804	\$4,617	\$4,651	\$3,833	8.44%	\$4,089	\$3,779	\$3,808	\$3,576	4.78%
7 Valley Surgical Center <sup>1,10,13</sup>	\$2,433	\$2,206	\$2,284	\$1,889	9.59%	\$1,281	\$1,183	\$1,499	\$1,063	6.82%
7 Westfield SC <sup>1,10</sup>	\$2,239	\$2,315	\$3,321	\$4,198	-15.55%	\$2,137	\$2,205	\$2,989	\$3,225	-11.25%
7 Wyomissing Surgical Serv <sup>1,10</sup>	\$2,893	\$2,316	\$2,275	\$2,031	14.15%	\$1,015	\$1,096	\$1,264	\$1,230	-5.82%
<b>Region 8 Average</b>	<b>\$3,533</b>	<b>\$3,492</b>	<b>\$3,326</b>	<b>\$3,062</b>	<b>5.12%</b>	<b>\$2,728</b>	<b>\$2,645</b>	<b>\$2,516</b>	<b>\$2,425</b>	<b>4.16%</b>
8 Abington SC <sup>10</sup>	\$14,644	\$13,104	\$13,301	\$12,733	5.00%	\$12,566	\$11,617	\$11,550	\$10,583	6.25%
8 AFP SC <sup>1,10</sup>	\$1,009	\$1,026	\$1,319	\$1,429	-9.79%	\$815	\$802	\$1,137	\$1,381	-13.66%
8 Ambulatory Endo SC/Bucks <sup>1,10,13</sup>	\$2,209	\$2,611	\$2,057	\$1,826	7.00%	\$2,204	\$1,780	\$1,684	\$1,294	23.44%
8 ASC Bucks County <sup>7</sup>	\$11,632	\$11,127	\$9,051	\$4,309	56.65%	\$6,352	\$6,548	\$5,801	\$2,853	40.88%
8 Best Impression SC <sup>1,3,10</sup>	\$78	\$72	\$21	NA	NA	\$92	\$93	\$53	NA	NA
8 Blue Bell SC <sup>1,10</sup>	\$7,214	\$8,954	NA	NA	NA	\$4,573	\$4,599	NA	NA	NA
8 Brandywine SC <sup>1,10</sup>	\$321	\$310	\$254	NR	NR	\$301	\$314	\$257	NR	NR
8 Brandywine Vly Endoscopy <sup>1,10</sup>	\$1,079	\$1,226	\$1,286	\$1,071	0.25%	\$867	\$885	\$838	\$994	-4.26%
8 Bucks County GI Endo SC <sup>1,10</sup>	\$2,588	\$2,766	\$2,692	\$2,300	4.17%	\$1,848	\$1,857	\$1,736	\$1,760	1.67%
8 Bux-Mont Endoscopy <sup>1,4,10</sup>	\$2,105	NA	NA	NA	NA	\$1,475	NA	NA	NA	NA
8 Cornerstone ASC <sup>1,10</sup>	\$1,747	\$722	NA	NA	NA	\$1,671	\$1,074	NA	NA	NA
8 Del Valley Ortho/Spine SC <sup>1,7,10</sup>	\$3,440	\$3,674	\$3,435	\$3,791	-3.09%	\$3,354	\$3,653	\$3,011	\$3,131	2.38%

See footnotes on page 24.

## Individual Ambulatory Surgery Center Data

Ambulatory Surgery Center	Operating Margin FY10	Total Margin FY10	3-yr Average Total Margin FY08-FY10	Medicare Share of NPR FY10	Medical Assistance Share of NPR FY10	Visits FY10
<b>Statewide Average</b>	<b>26.20%</b>	<b>26.29%</b>	<b>26.23%</b>	<b>24.52%</b>	<b>3.82%</b>	<b>4,040</b>
Bethlehem Endoscopy <sup>1, 10</sup>	43.67%	43.44%	40.95%	24.59%	1.86%	4,164
Center for Specialized <sup>1, 10</sup>	28.08%	28.08%	35.14%	23.59%	1.50%	4,857
College Heights Endoscopy <sup>1, 10, 13</sup>	56.60%	56.60%	58.01%	21.33%	0.35%	7,457
Eastern PA Endoscopy <sup>1, 10</sup>	40.43%	40.45%	47.44%	21.39%	0.98%	5,860
Fairgrounds SC <sup>2, 10</sup>	12.51%	12.52%	1.58%	14.86%	7.56%	3,203
Keystone SC <sup>1, 10</sup>	13.32%	13.32%	6.62%	13.23%	0.01%	453
Mahoning Valley ASC <sup>1, 10</sup>	36.61%	36.61%	43.67%	75.22%	0.99%	2,239
PA Eye & Ear SC <sup>10</sup>	26.16%	26.16%	24.31%	37.47%	1.90%	4,316
Premier Podiatric SC <sup>1, 3, 10</sup>	23.05%	23.05%	13.54%	24.54%	0.00%	100
Progressive Laser Surgi <sup>1, 10</sup>	34.20%	34.20%	30.67%	46.68%	16.53%	925
Progressive Surgical Inst <sup>1, 10</sup>	38.65%	38.65%	44.71%	56.77%	5.77%	1,643
Proserpi-Schlechter <sup>1, 10</sup>	-5.35%	-5.35%	-4.16%	0.00%	0.00%	136
Reading ASC <sup>1, 10</sup>	44.30%	44.30%	47.68%	12.23%	1.07%	6,330
Reading Endoscopy Center <sup>1, 10</sup>	24.77%	24.77%	22.02%	16.80%	11.56%	2,722
Reading SC/Spring Ridge <sup>1, 10, 13</sup>	35.29%	35.33%	32.48%	7.19%	1.92%	8,562
SC of Allentown <sup>1, 3, 10, 13</sup>	30.15%	30.15%	36.57%	15.35%	0.20%	7,511
SC Pottsville <sup>1, 10</sup>	13.45%	13.45%	17.98%	23.05%	6.44%	3,200
Schuylkill Endoscopy <sup>1, 10</sup>	46.49%	46.50%	46.94%	27.35%	1.12%	10,584
State Hill SC <sup>1, 10</sup>	27.32%	27.32%	NA	69.79%	0.19%	880
Twin Rivers Endoscopy <sup>1, 10</sup>	49.70%	49.71%	49.63%	19.28%	0.00%	4,635
Valley Access/Eastern PA <sup>1, 10</sup>	22.19%	22.19%	NA	77.00%	1.02%	957
Valley Access/Lehigh <sup>1, 10</sup>	25.27%	25.27%	NA	75.59%	0.37%	732
Valley Eye SC <sup>1, 10</sup>	16.49%	16.55%	17.75%	64.66%	1.09%	5,212
Valley Surgical Center <sup>1, 10, 13</sup>	47.34%	47.42%	43.01%	25.10%	9.48%	3,792
Westfield SC <sup>1, 10</sup>	4.59%	5.25%	7.34%	20.95%	0.90%	3,487
Wyomissing Surgical Serv <sup>1, 10</sup>	64.94%	64.95%	54.97%	26.13%	0.22%	3,088
<b>Region 8 Average</b>	<b>23.36%</b>	<b>23.45%</b>	<b>24.40%</b>	<b>24.11%</b>	<b>2.81%</b>	<b>3,818</b>
Abington SC <sup>10</sup>	19.09%	19.21%	17.72%	16.45%	1.10%	18,568
AFP SC <sup>1, 10</sup>	19.25%	19.25%	17.95%	24.39%	0.00%	1,073
Ambulatory Endo SC/Bucks <sup>1, 10, 13</sup>	0.21%	0.21%	17.58%	14.35%	2.53%	5,204
ASC Bucks County <sup>7</sup>	45.39%	45.39%	41.21%	0.00%	13.83%	10,457
Best Impression SC <sup>1, 3, 10</sup>	-17.40%	-17.40%	-39.04%	12.89%	0.00%	338
Blue Bell SC <sup>1, 10</sup>	36.62%	36.62%	NA	8.88%	0.02%	2,470
Brandywine SC <sup>1, 10</sup>	6.26%	6.26%	1.46%	0.00%	0.00%	308
Brandywine Vly Endoscopy <sup>1, 10</sup>	19.63%	19.63%	27.89%	12.13%	0.00%	2,214
Bucks County GI Endo SC <sup>1, 10</sup>	28.60%	28.60%	32.38%	20.53%	8.92%	4,665
Bux-Mont Endoscopy <sup>1, 4, 10</sup>	29.94%	29.94%	NA	19.23%	1.55%	3,701
Cornerstone ASC <sup>1, 10</sup>	9.07%	9.07%	NA	24.20%	11.25%	1,302
Del Valley Ortho/Spine SC <sup>1, 7, 10</sup>	2.48%	2.48%	5.03%	7.95%	9.42%	2,698

See footnotes on page 24.

## Individual Ambulatory Surgery Center Data

Region/Ambulatory Surgery Center	Net Patient Revenue NPR (thousands)				3-yr Avg Change in NPR FY07-FY10	Total Operating Expenses TOE (thousands)				3-yr Avg Change in TOE FY07-FY10
	FY10	FY09	FY08	FY07		FY10	FY09	FY08	FY07	
<b>Statewide Average</b>	<b>\$3,882</b>	<b>\$3,774</b>	<b>\$3,622</b>	<b>\$3,358</b>	<b>5.21%</b>	<b>\$2,885</b>	<b>\$2,799</b>	<b>\$2,700</b>	<b>\$2,568</b>	<b>4.12%</b>
8 Delaware Valley Laser <sup>1, 7, 10</sup>	\$2,163	\$2,491	\$2,481	\$2,196	-0.50%	\$1,680	\$1,848	\$1,977	\$1,684	-0.09%
8 Dermatologic/Drexel Hill <sup>1, 10</sup>	\$799	\$963	\$1,001	\$958	-5.55%	\$797	\$998	\$939	\$861	-2.47%
8 Doylestown SC <sup>1, 10, 13</sup>	\$5,047	\$5,298	NR	NR	NR	\$5,076	\$5,338	NR	NR	NR
8 Einstein SC <sup>7</sup>	\$5,570	\$4,900	\$4,905	\$4,889	4.64%	\$4,709	\$4,179	\$4,355	\$4,444	1.99%
8 Endoscopic Associates <sup>1, 10, 13</sup>	\$4,260	\$4,276	\$3,961	\$4,296	-0.28%	\$4,246	\$4,227	\$3,969	\$4,290	-0.34%
8 Endoscopy Center <sup>1, 10</sup>	\$2,097	\$2,097	\$2,273	\$2,371	-3.85%	\$1,555	\$2,045	\$1,423	\$1,312	6.18%
8 Endoscopy Center of Bucks <sup>1, 10, 13</sup>	\$3,456	\$3,543	\$3,030	\$2,679	9.67%	\$1,394	\$1,450	\$1,358	\$1,456	-1.42%
8 Endoscopy St Mary <sup>1, 10, 13</sup>	\$6,039	\$6,449	\$8,967	\$3,526	23.76%	\$2,970	\$3,135	\$3,367	\$2,668	3.77%
8 Eye SC <sup>1, 10</sup>	\$5,136	\$4,434	\$4,189	\$3,823	11.45%	\$3,483	\$3,140	\$2,988	\$2,653	10.43%
8 Eye SC Chester <sup>1, 10</sup>	\$3,606	\$3,569	\$3,698	\$3,588	0.16%	\$2,791	\$2,763	\$2,588	\$2,425	5.03%
8 Foundation/Ft Washington <sup>1, 10, 13</sup>	\$1,974	\$2,276	\$2,958	\$2,439	-6.35%	\$1,784	\$2,034	\$2,676	\$2,440	-8.95%
8 Grand View Endoscopy Ctr <sup>3</sup>	\$426	\$948	\$870	\$799	NA	\$314	\$829	\$743	\$710	NA
8 Holy Redeemer ASC <sup>10</sup>	\$6,369	\$5,755	\$6,690	\$5,358	6.29%	\$4,706	\$4,569	\$4,601	\$4,195	4.06%
8 Huntingdon Valley SC <sup>1, 10</sup>	\$9,827	\$10,898	\$9,137	\$7,756	8.90%	\$5,713	\$6,085	\$5,375	\$5,302	2.58%
8 Hypertension Nephrology <sup>1, 3, 10</sup>	\$1,450	\$1,615	\$1,357	NA	NA	\$962	\$967	\$845	NA	NA
8 Keystone Kidney Center <sup>1, 10</sup>	\$1,605	\$1,913	\$1,674	\$1,662	-1.14%	\$978	\$1,108	\$934	\$967	0.39%
8 Kole Plastic SC <sup>1, 10, 14</sup>	\$91	\$66	\$46	\$94	-1.08%	\$77	\$62	\$30	\$94	-5.94%
8 Laser Spine SC <sup>1, 4, 7, 10</sup>	\$6,209	NA	NA	NA	NA	\$6,033	NA	NA	NA	NA
8 Leonard Dzubow ASC <sup>1, 10</sup>	\$670	\$594	\$777	\$687	-0.82%	\$189	\$179	\$182	\$170	3.67%
8 Liberty Eye SC <sup>1, 10</sup>	\$3,935	\$3,229	\$3,275	\$3,207	7.56%	\$2,971	\$2,772	\$2,426	\$2,524	5.89%
8 Main Line Endoscopy/East <sup>1, 10</sup>	\$3,246	\$3,318	\$3,625	\$3,810	-4.94%	\$1,548	\$1,607	\$1,698	\$1,659	-2.24%
8 Main Line Endoscopy/South <sup>1, 10</sup>	\$979	\$371	\$248	\$689	14.04%	\$636	\$223	\$618	\$756	-5.28%
8 Main Line Endoscopy/West <sup>1, 10</sup>	\$4,705	\$4,865	\$5,012	\$4,990	-1.90%	\$2,099	\$2,068	\$2,232	\$2,247	-2.19%
8 Main Line SC <sup>1, 10</sup>	\$8,811	\$7,557	\$6,836	\$5,194	23.21%	\$7,617	\$6,285	\$4,803	\$3,885	32.03%
8 Main Line Spine SC <sup>1, 10</sup>	\$3,129	\$2,728	\$2,509	\$2,450	9.24%	\$2,442	\$2,017	\$1,918	\$1,363	26.36%
8 Manoa Diagnostic Center <sup>1, 10, 13</sup>	\$1,945	\$1,967	NR	\$1,663	5.66%	\$848	\$842	NR	\$545	18.50%
8 Montgomery SC <sup>1, 10</sup>	\$2,467	\$2,495	\$2,530	\$2,470	-0.04%	\$2,306	\$2,451	\$2,496	\$2,553	-3.21%
8 Pain & SC/Langhorne <sup>1, 10</sup>	\$2,931	\$2,028	\$1,275	NA	NA	\$2,487	\$1,809	\$1,506	NA	NA
8 Paoli SC <sup>1, 10</sup>	\$5,940	\$5,318	\$4,474	\$4,894	7.12%	\$4,937	\$4,755	\$4,374	\$4,644	2.10%
8 Penn Medicine Radnor Endo <sup>7</sup>	\$3,311	\$3,222	\$2,998	\$2,469	11.36%	\$4,008	\$3,218	\$3,267	\$2,881	13.03%
8 Phila Cosmetic Surgery <sup>1, 10, 13</sup>	\$395	NR	\$839	\$1,050	-20.80%	\$426	NR	\$804	\$1,056	-19.87%
8 Plaza SC <sup>1, 10</sup>	\$249	\$264	\$346	\$297	-5.32%	\$244	\$263	\$346	\$303	-6.49%
8 PMA Gastroenterology <sup>1, 10</sup>	\$2,289	\$2,278	\$379	NA	NA	\$1,924	\$1,966	\$927	NA	NA
8 Pottstown SC <sup>1, 10</sup>	\$1,941	\$1,842	\$1,694	\$1,627	6.42%	\$1,525	\$1,392	\$1,213	\$1,272	6.63%
8 Quality Vascular Access <sup>1, 3, 10</sup>	\$1,713	\$1,618	\$1,454	NA	NA	\$1,130	\$1,008	\$858	NA	NA
8 Sally Balin ASC <sup>1, 10</sup>	\$465	\$552	\$721	\$603	-7.63%	\$469	\$550	\$673	\$639	-8.85%
8 SC at Brinton Lake <sup>1, 10, 13</sup>	\$7,655	\$6,933	\$5,784	\$4,076	29.27%	\$6,940	\$6,358	\$5,654	\$4,769	15.17%
8 SC Chester County <sup>1, 10</sup>	\$2,084	\$2,263	\$2,826	\$2,361	-3.91%	\$1,946	\$2,383	\$2,831	\$2,089	-2.29%
8 SC Limerick <sup>1, 7, 10, 13</sup>	\$5,130	\$5,246	\$5,479	\$4,890	1.63%	\$2,549	\$2,904	\$3,312	\$2,912	-4.15%

See footnotes on page 24.



## Individual Ambulatory Surgery Center Data

Ambulatory Surgery Center	Operating Margin FY10	Total Margin FY10	3-yr Average Total Margin FY08-FY10	Medicare Share of NPR FY10	Medical Assistance Share of NPR FY10	Visits FY10
<b>Statewide Average</b>	<b>26.20%</b>	<b>26.29%</b>	<b>26.23%</b>	<b>24.52%</b>	<b>3.82%</b>	<b>4,040</b>
Delaware Valley Laser <sup>1, 7, 10</sup>	22.36%	22.36%	22.84%	44.26%	7.85%	2,798
Dermatologic/Drexel Hill <sup>1, 10</sup>	0.19%	0.19%	1.02%	22.17%	0.00%	2,192
Doylestown SC <sup>1, 10, 13</sup>	-0.57%	1.06%	NR	37.43%	0.00%	4,044
Einstein SC <sup>7</sup>	23.64%	23.64%	20.73%	21.97%	20.67%	3,560
Endoscopic Associates <sup>1, 10, 13</sup>	0.33%	1.06%	1.11%	14.01%	0.00%	8,910
Endoscopy Center <sup>1, 10</sup>	25.88%	25.88%	22.33%	24.63%	1.40%	4,128
Endoscopy Center of Bucks <sup>1, 10, 13</sup>	59.67%	59.69%	58.16%	18.81%	0.00%	6,222
Endoscopy St Mary <sup>1, 10, 13</sup>	50.82%	50.90%	55.96%	11.11%	0.00%	5,202
Eye SC <sup>1, 10</sup>	32.19%	32.19%	30.20%	47.35%	4.35%	7,330
Eye SC Chester <sup>1, 10</sup>	22.60%	22.67%	25.26%	55.34%	2.86%	3,608
Foundation/Ft Washington <sup>1, 10, 13</sup>	9.60%	9.60%	9.90%	16.89%	0.00%	839
Grand View Endoscopy Ctr <sup>3</sup>	26.37%	26.37%	15.98%	14.09%	0.56%	364
Holy Redeemer ASC <sup>10</sup>	26.10%	26.10%	26.46%	10.82%	0.00%	6,386
Huntingdon Valley SC <sup>1, 10</sup>	41.86%	41.86%	42.49%	15.03%	0.00%	6,629
Hypertension Nephrology <sup>1, 3, 10</sup>	33.64%	33.64%	37.25%	56.32%	0.39%	783
Keystone Kidney Center <sup>1, 10</sup>	39.06%	39.06%	41.82%	2.77%	2.58%	343
Kole Plastic SC <sup>1, 10, 14</sup>	15.65%	15.65%	17.12%	0.00%	0.00%	64
Laser Spine SC <sup>1, 4, 7, 10</sup>	2.84%	2.84%	NA	12.73%	0.00%	548
Leonard Dzubow ASC <sup>1, 10</sup>	71.76%	71.77%	73.13%	34.72%	0.00%	1,111
Liberty Eye SC <sup>1, 10</sup>	24.50%	24.50%	21.78%	66.13%	10.28%	4,157
Main Line Endoscopy/East <sup>1, 10</sup>	52.32%	52.32%	52.63%	21.56%	0.00%	7,867
Main Line Endoscopy/South <sup>1, 10</sup>	35.06%	35.07%	24.99%	26.30%	0.00%	1,739
Main Line Endoscopy/West <sup>1, 10</sup>	55.39%	55.39%	56.30%	18.39%	0.02%	7,664
Main Line SC <sup>1, 10</sup>	13.55%	13.55%	19.41%	51.62%	2.12%	6,856
Main Line Spine SC <sup>1, 10</sup>	21.98%	21.98%	23.79%	18.46%	0.37%	5,406
Manoa Diagnostic Center <sup>1, 10, 13</sup>	56.43%	56.43%	NR	73.27%	7.90%	2,433
Montgomery SC <sup>1, 10</sup>	6.52%	6.52%	3.18%	60.95%	1.96%	2,125
Pain & SC/Langhorne <sup>1, 10</sup>	15.16%	15.24%	6.99%	37.47%	3.08%	4,656
Paoli SC <sup>1, 10</sup>	17.02%	17.02%	10.86%	13.82%	0.24%	4,576
Penn Medicine Radnor Endo <sup>7</sup>	-20.95%	-20.95%	-10.01%	27.66%	2.28%	3,266
Phila Cosmetic Surgery <sup>1, 10, 13</sup>	-8.08%	-8.07%	NR	0.00%	0.00%	1,203
Plaza SC <sup>1, 10</sup>	2.21%	2.21%	0.78%	0.00%	0.00%	117
PMA Gastroenterology <sup>1, 10</sup>	17.26%	17.37%	3.51%	17.32%	2.05%	4,056
Pottstown SC <sup>1, 10</sup>	21.41%	21.41%	24.60%	17.88%	0.00%	4,005
Quality Vascular Access <sup>1, 3, 10</sup>	34.05%	34.05%	37.41%	54.10%	0.25%	811
Sally Balin ASC <sup>1, 10</sup>	-0.94%	-0.94%	2.63%	45.29%	0.00%	645
SC at Brinton Lake <sup>1, 10, 13</sup>	9.34%	9.34%	6.97%	9.38%	0.26%	7,085
SC Chester County <sup>1, 10</sup>	6.64%	6.64%	0.18%	20.59%	0.00%	2,453
SC Limerick <sup>1, 7, 10, 13</sup>	50.32%	50.32%	44.71%	32.66%	0.88%	3,511

See footnotes on page 24.

## Individual Ambulatory Surgery Center Data

Region/Ambulatory Surgery Center	Net Patient Revenue NPR (thousands)				3-yr Avg Change in NPR FY07-FY10	Total Operating Expenses TOE (thousands)				3-yr Avg Change in TOE FY07-FY10
	FY10	FY09	FY08	FY07		FY10	FY09	FY08	FY07	
<b>Statewide Average</b>	<b>\$3,882</b>	<b>\$3,774</b>	<b>\$3,622</b>	<b>\$3,358</b>	<b>5.21%</b>	<b>\$2,885</b>	<b>\$2,799</b>	<b>\$2,700</b>	<b>\$2,568</b>	<b>4.12%</b>
8 SC of the Main Line <sup>1, 3, 10, 13</sup>	\$5,505	\$5,392	\$4,703	\$770	NA	\$4,643	\$4,678	\$4,772	\$1,714	NA
8 SC Pennsylvania <sup>1, 10</sup>	\$6,503	\$6,912	\$5,668	\$5,727	4.52%	\$5,525	\$5,394	\$5,221	\$5,283	1.53%
8 Springfield ASC <sup>1, 10</sup>	\$3,890	\$4,413	\$4,702	\$4,228	-2.67%	\$2,934	\$3,003	\$3,197	\$2,976	-0.47%
8 Trevoze Specialty Care SC <sup>1, 3, 10, 13</sup>	\$1,970	\$674	NA	NA	NA	\$1,824	\$944	NA	NA	NA
8 Tri-County Eye Surgery <sup>1, 10</sup>	\$2,651	\$2,568	\$2,451	\$2,840	-2.22%	\$1,660	\$1,631	\$1,673	\$1,714	-1.04%
8 Turk's Head SC <sup>1, 10</sup>	\$5,974	\$4,881	\$4,675	\$3,519	23.25%	\$5,204	\$5,040	\$4,216	\$3,979	10.27%
8 Valley Forge SC <sup>1, 10</sup>	\$1,041	\$906	\$1,204	\$635	21.28%	\$898	\$836	\$959	\$574	18.77%
8 Valley Pain Center <sup>1, 10</sup>	\$3,290	\$3,183	\$3,043	\$2,690	7.44%	\$2,780	\$2,593	\$2,781	\$2,393	5.39%
8 Warminster SC <sup>4, 10, 11</sup>	\$1,873	NA	NA	NA	NA	\$2,077	NA	NA	NA	NA
8 West Chester Endoscopy <sup>1, 10, 13</sup>	\$3,816	\$3,793	\$4,551	\$3,632	1.69%	\$2,353	\$2,085	\$2,052	\$1,757	11.30%
8 Wills Eye SC Plymouth Mtg <sup>10</sup>	\$3,590	\$3,617	\$4,354	\$4,163	-4.59%	\$3,255	\$3,225	\$3,658	\$3,593	-3.14%
8 Wills SC Bucks County <sup>10</sup>	\$4,298	\$3,943	\$3,838	\$3,593	6.54%	\$4,061	\$3,563	\$3,499	\$3,497	5.38%
<b>Region 9 Average</b>	<b>\$3,464</b>	<b>\$3,030</b>	<b>\$2,882</b>	<b>\$2,718</b>	<b>9.15%</b>	<b>\$2,837</b>	<b>\$2,529</b>	<b>\$2,503</b>	<b>\$2,397</b>	<b>6.12%</b>
9 American Access Care PA <sup>1, 4, 10</sup>	\$4,537	NA	NA	NA	NA	\$4,451	NA	NA	NA	NA
9 CHOP ASC Exton <sup>7</sup>	\$10,248	\$9,039	\$8,685	\$4,734	38.83%	\$4,839	\$4,741	\$4,409	\$2,613	28.40%
9 Clinical Nephrology Assoc <sup>1, 3, 10</sup>	\$1,495	\$1,234	NA	NA	NA	\$1,172	\$1,108	NA	NA	NA
9 Dermatologic/Philadelphia <sup>1, 10</sup>	\$514	\$509	\$732	\$910	-14.51%	\$476	\$505	\$637	\$751	-12.19%
9 Drexel Centers	\$1,505	\$1,368	\$1,098	\$1,040	14.90%	\$997	\$873	\$720	\$686	15.10%
9 Gastrointestinal Spec <sup>1, 10</sup>	\$2,289	\$2,455	\$2,371	\$2,372	-1.18%	\$2,304	\$2,483	\$2,264	\$2,382	-1.08%
9 HUP Reproductive Surgical <sup>13</sup>	\$815	\$946	\$829	\$789	1.08%	\$1,037	\$952	\$973	\$673	18.02%
9 Jefferson SC/Navy Yard <sup>1, 2, 4, 10</sup>	\$4,431	NA	NA	NA	NA	\$3,781	NA	NA	NA	NA
9 Metropolitan Nephrology <sup>1, 3, 10</sup>	\$1,023	\$859	NA	NA	NA	\$774	\$766	NA	NA	NA
9 Mt Airy AESC <sup>1, 10</sup>	\$1,306	\$1,198	\$1,392	\$1,362	-1.36%	\$1,305	\$883	\$1,547	\$1,380	-1.81%
9 PGC Endoscopy <sup>1, 10</sup>	\$1,668	\$1,804	\$1,624	NA	NA	\$1,696	\$1,752	\$1,539	NA	NA
9 Philadelphia SC <sup>10, 13</sup>	\$1,721	\$1,979	\$1,815	\$1,777	-1.06%	\$1,592	\$1,516	\$1,779	\$1,885	-5.19%
9 Red Lion SC <sup>1, 10</sup>	\$4,288	\$2,685	\$1,996	NA	NA	\$2,281	\$1,735	\$1,864	NA	NA
9 SC of Pennsylvania Hosp	\$5,257	\$4,002	NA	NA	NA	\$5,022	\$4,097	NA	NA	NA
9 Temple Univ/Podiatric ASC <sup>7</sup>	\$128	\$58	\$29	(\$30)	-173.80%	\$441	\$360	\$297	\$307	14.58%
9 Washington Endoscopy <sup>1, 10</sup>	\$3,947	\$4,492	\$4,249	\$5,190	-7.98%	\$3,055	\$3,274	\$2,984	\$3,019	0.39%
9 Wills SC Northeast <sup>10</sup>	\$3,451	\$3,376	\$3,154	\$2,796	7.81%	\$3,291	\$3,149	\$3,225	\$2,959	3.74%
9 Wills SC/Phila Stadium <sup>10</sup>	\$4,893	\$5,301	\$5,386	\$4,605	2.09%	\$4,118	\$4,313	\$4,500	\$4,114	0.04%
9 Wills Surgical Ctr City	\$12,307	\$10,203	\$9,630	\$9,707	8.93%	\$11,278	\$10,480	\$9,709	\$9,574	5.93%

See footnotes on page 24.



## Individual Ambulatory Surgery Center Data

Ambulatory Surgery Center	Operating Margin FY10	Total Margin FY10	3-yr Average Total Margin FY08-FY10	Medicare Share of NPR FY10	Medical Assistance Share of NPR FY10	Visits FY10
<b>Statewide Average</b>	<b>26.20%</b>	<b>26.29%</b>	<b>26.23%</b>	<b>24.52%</b>	<b>3.82%</b>	<b>4,040</b>
SC of the Main Line <sup>1, 3, 10, 13</sup>	15.64%	15.64%	9.66%	12.85%	1.06%	3,751
SC Pennsylvania <sup>1, 10</sup>	15.04%	15.16%	15.54%	32.41%	2.27%	6,592
Springfield ASC <sup>1, 10</sup>	24.57%	24.57%	29.72%	17.86%	0.36%	6,921
Trevoze Specialty Care SC <sup>1, 3, 10, 13</sup>	7.42%	7.42%	NA	21.35%	0.74%	1,090
Tri-County Eye Surgery <sup>1, 10</sup>	37.38%	37.38%	35.29%	70.29%	0.90%	2,514
Turk's Head SC <sup>1, 10</sup>	12.88%	14.25%	7.88%	20.79%	1.41%	5,675
Valley Forge SC <sup>1, 10</sup>	13.77%	13.77%	14.52%	0.00%	0.00%	2,308
Valley Pain Center <sup>1, 10</sup>	15.76%	15.76%	15.13%	16.00%	0.00%	4,392
Warminster SC <sup>4, 10, 11</sup>	-10.83%	-10.83%	NA	10.07%	3.89%	1,899
West Chester Endoscopy <sup>1, 10, 13</sup>	38.35%	38.35%	46.64%	13.21%	0.32%	6,778
Wills Eye SC Plymouth Mtg <sup>10</sup>	9.33%	9.33%	12.64%	55.86%	1.04%	2,847
Wills SC Bucks County <sup>10</sup>	5.53%	5.53%	8.91%	56.99%	7.98%	3,077
<b>Region 9 Average</b>	<b>18.92%</b>	<b>18.95%</b>	<b>16.98%</b>	<b>26.07%</b>	<b>9.46%</b>	<b>3,373</b>
American Access Care PA <sup>1, 4, 10</sup>	1.90%	2.02%	NA	68.14%	4.73%	2,187
CHOP ASC Exton <sup>7</sup>	52.78%	52.78%	49.99%	0.25%	13.07%	7,093
Clinical Nephrology Assoc <sup>1, 3, 10</sup>	21.57%	21.57%	NA	61.64%	0.40%	780
Dermatologic/Philadelphia <sup>1, 10</sup>	7.29%	7.29%	7.82%	19.88%	0.00%	1,653
Drexel Centers	33.76%	33.76%	34.76%	21.11%	11.71%	2,865
Gastrointestinal Spec <sup>1, 10</sup>	-0.70%	-0.70%	0.88%	21.71%	3.07%	4,573
HUP Reproductive Surgical <sup>13</sup>	-4.18%	-4.18%	3.63%	0.40%	0.21%	519
Jefferson SC/Navy Yard <sup>1, 2, 4, 10</sup>	14.68%	14.68%	NA	12.03%	0.01%	931
Metropolitan Nephrology <sup>1, 3, 10</sup>	24.38%	24.38%	NA	65.85%	0.26%	460
Mt Airy AESC <sup>1, 10</sup>	0.07%	0.07%	4.12%	17.68%	14.18%	2,219
PGC Endoscopy <sup>1, 10</sup>	-1.63%	-1.61%	2.15%	28.00%	6.54%	3,989
Philadelphia SC <sup>10, 13</sup>	7.49%	7.49%	11.38%	10.82%	5.45%	4,432
Red Lion SC <sup>1, 10</sup>	46.80%	46.83%	34.45%	0.00%	58.11%	2,027
SC of Pennsylvania Hosp	12.32%	12.32%	NA	15.68%	7.17%	3,283
Temple Univ/Podiatric ASC <sup>7</sup>	-243.62%	-243.62%	-410.58%	9.42%	50.37%	258
Washington Endoscopy <sup>1, 10</sup>	22.61%	22.61%	26.65%	12.25%	5.17%	8,732
Wills SC Northeast <sup>10</sup>	4.64%	4.66%	2.70%	44.52%	3.90%	3,795
Wills SC/Phila Stadium <sup>10</sup>	16.07%	16.24%	17.12%	37.33%	4.18%	5,801
Wills Surgical Ctr City	8.39%	8.39%	2.45%	44.05%	4.46%	8,497

See footnotes on page 24.

## Footnotes

1. The end of the fiscal year is not June 30. The data reflects the fiscal year that ended prior to June 30.
2. The data is less than 12 months; therefore, a three-year comparison is not appropriate for some of the measures.
3. Prior year(s) reflect less than 12 months of data; therefore, a three-year comparison is not appropriate for some of the measures.
4. This is the first reporting year for this facility. Often expenses are higher than operating revenue during the start-up period. Three-year comparisons are not appropriate for this facility.
5. The hospital has a specialty unit(s) such as psychiatric, rehabilitation, long-term care, skilled nursing, home health, etc., which are included in the data presented for the facility.
6. Extraordinary item(s) reported on audited financial statement was included in the calculation of total margin.
7. Balance sheet ratios are for the parent organization.
8. Acquired or merged with another licensed hospital during the FY10 reporting period.
9. Acquired or merged with another licensed hospital during the FY08 or FY09 reporting periods.
10. For-profit facility.
11. Facility is referred to by a different name, or it closed after the FY10 reporting period.
12. Facility failed to satisfy the financial filing requirements.
13. One or more of the required financial submissions was filed late.
14. Facility submitted incomplete or inaccurate data.
- NR Information necessary to report or calculate this measure was not reported by the facility.
- NA Not applicable.

Note: The above footnotes are applicable to all reports in PHC4's *Financial Analysis* series.

## Explanation of Terms and Measures

**3-year Average Change in Net Patient Revenue (NPR) or Total Operating Expenses (TOE):** The average annual change in the facility's NPR or TOE that occurred from the end of FY07 through FY10.

$$\frac{[(\text{NPR}_{10} - \text{NPR}_{07}) / \text{NPR}_{07}] / 3}{\text{or}} \\ \frac{[(\text{TOE}_{10} - \text{TOE}_{07}) / \text{TOE}_{07}] / 3}$$

**3-year Average Total Margin:** The average total margin realized by the facility during FY08 through FY10.

$$(\Sigma \text{ revenue over expenses}_{10, 09, 08} / \Sigma \text{ total revenue}_{10, 09, 08})$$

**Ambulatory Surgery Center (ASC):** A licensed facility by the Pennsylvania Department of Health that provides specialty or multi-specialty surgical care to patients who do not require overnight hospitalization, but require medical supervision following a procedure. An ASC does not include individual or group practice offices of private physicians or dentists.

**Commercial Third-Party Payers:** Commercial insurers encompass all indemnity and managed care health insurance plans, including Blue Cross and Blue Shield plans, and hospital and health system plans. Government-funded programs, such as Medicare managed care, are not included even if a commercial insurer administers the program.

**Long-Term Acute Care (LTAC) Hospital:** A licensed acute care hospital by the Pennsylvania Department of Health that provides medical services for patients that require extended lengths of acute care inpatient stay.

**Net Patient Revenue (NPR):** Net patient revenue reflects revenue for patient care only and does not include revenue from other operations, such as the cafeteria, parking, rent, research and educational activities. Revenue from those operations is included in total operating revenue. NPR may include retroactive adjustments from third-party payers for care provided during a previous fiscal year.

**Other Third-Party Payers:** Third-party payers other than health insurance companies and managed care organizations. These include direct payments by employers or associations, auto insurance, workers compensation, and government programs (other than Medicare and Medical Assistance).

**Operating Income:** The amount by which total operating revenue exceeds total operating expenses.

$$(\text{total operating revenue} - \text{total operating expenses})$$

**Operating Margin:** The ratio of operating income to total operating revenue. This measure places operating income in perspective with the volume of business realized by the facility.

$$(\text{operating income} / \text{total operating revenue})$$

**Outpatient Visits:** The number of visits to the individual outpatient department of the hospital or surgery center during the fiscal year.

**Psychiatric Hospital:** A licensed institution certified by the Pennsylvania Department of Welfare to operate as a hospital that provides short-term acute psychiatric services on an inpatient basis. Psychiatric hospitals may also offer long-term residential and outpatient programs. Acute psychiatric care is rendered in response to severe psychiatric conditions requiring intensive or extensive intervention to bring the patient's symptoms under control.

**Rehabilitation Hospital:** A licensed inpatient facility by the Pennsylvania Department of Health, which is operated for the primary purpose of assisting in the physical rehabilitation of persons through an integrated program of medical and other services. Rehabilitation hospitals may also offer outpatient services.

**Specialty Hospital:** A licensed facility by the Pennsylvania Department of Health that provides specific types of inpatient and outpatient settings of care, such as drug and alcohol.

**Total Margin:** The ratio of total income to total revenue. This measure puts income from all sources in perspective with all revenues received by a facility.

$$(\text{revenue over expenses} / \text{total revenue})$$

**Total Net Income (Revenue over Expenses):** Total net income reflects the sum of operating income and non-operating income. Total income may also include an extraordinary item, such as the gain or loss from the sale of securities.

**Total Operating Expenses (TOE):** All costs associated with operating the entire facility, such as salaries, professional fees, supplies, depreciation, interest, insurance and bad debts. The acquisition of durable equipment and other property are not considered expenses and are reflected on the facility's balance sheet as assets. However, the cost to finance equipment (interest) as well as the depreciation, operation and maintenance costs of capital equipment are operating expenses.

**Total Operating Revenue (TOR):** All revenues allocated by the facility to meet operating expenses. Includes revenue sources such as net patient revenue, investment income, contributions, and revenue from other operations (e.g., cafeteria, parking, rent, research and educational activities). Individual facilities may also allocate investment income, contributions, etc., as non-operating income.

**Total Revenue:** Operating revenue plus non-operating income. The non-operating income component typically includes unrestricted contributions, investment income, and net investment gains and losses on marketable securities.

## Non-Compliant Ambulatory Surgery Centers

### No Submission

The following ambulatory surgery centers were not in compliance with one or more of PHC4's filing requirements and are not included in this report.

Bryn Mawr Med Specialists  
Carbon-Schuylkill Endo  
Conyngham Valley SC  
Greater Erie SC  
Mercy SC  
Northwood SC  
Rhawn Street Endoscopy  
Ridley Crossing SC  
Valley ASC  
Williamsport SC

### Late Submission

The following ambulatory surgery centers submitted their annual financial data and/or the supporting audited financial statements late.

Altoona Specialty Center	Foot and Ankle SC	Pine Grove ASC
Ambulatory Endo SC/Bucks	Foundation/Ft Washington	Pocono ASC
Brookpark SC	Grandview Surgery & Laser	Reading SC/Spring Ridge
Carlisle Outpatient SC	Hanover SC	SC at Brinton Lake
Center for Spine Care	HUP Reproductive Surgical	SC Central PA
Center for Surgical Arts	Laurel Surgical Center	SC Edgeworth Commons
College Heights Endoscopy	Lewisburg Plastic & Laser	SC Limerick
Community SC	Manoa Diagnostic Center	SC of Allentown
Delmont SC	Mount Nittany SC	SC of the Main Line
Doylestown SC	Mt Pleasant SC	Southwestern ASC
East Side SC	Neurospine Center	Southwestern PA Eye SC
East York Eye SC	Ophthalmic Associates SC	Susquehanna Endoscopy
Endoscopic Associates	Ophthalmology SC	Trevose Specialty Care SC
Endoscopy Center of Bucks	Phila Cosmetic Surgery	Valley Surgical Center
Endoscopy St Mary	Philadelphia SC	West Chester Endoscopy





## **Pennsylvania Health Care Cost Containment Council**

**Joe Martin, Executive Director**

**225 Market Street, Suite 400, Harrisburg, PA 17101**

**Phone: 717-232-6787 • Fax: 717-232-3821**

**[www.phc4.org](http://www.phc4.org)**



### **For More Information**

The information contained in this report and other PHC4 publications is available online at [www.phc4.org](http://www.phc4.org). Additional financial, hospitalization and ambulatory procedure health care data is available for purchase. For more information, contact PHC4's Data Requests Unit at [specialrequests@phc4.org](mailto:specialrequests@phc4.org) or 717-232-6787.