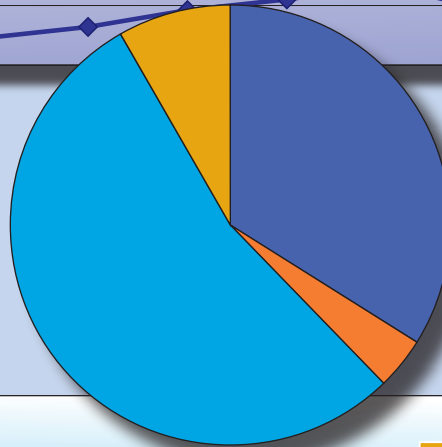
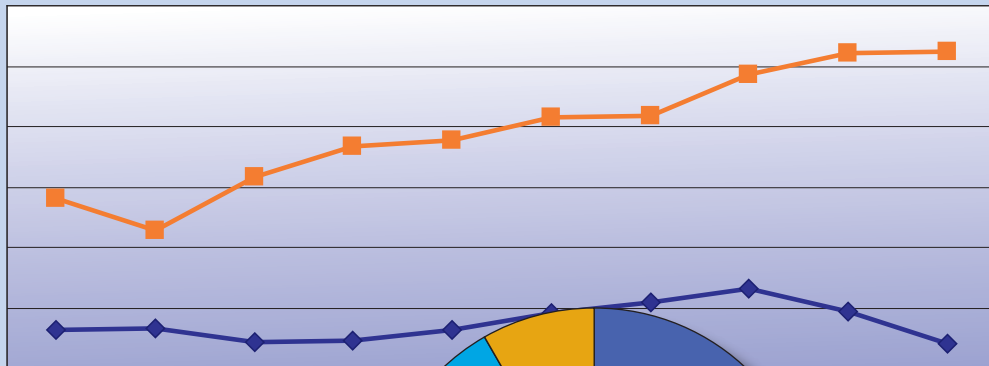


Financial Analysis 2009

Volume Two • Ambulatory Surgery Centers
Fiscal Year 2009





The Pennsylvania Health Care Cost Containment Council (PHC4) is an independent state agency established by Pennsylvania law (Act 89 of 1986, as amended). PHC4 is charged with collecting, analyzing and reporting information that can be used to improve the quality and restrain the cost of health care in Pennsylvania.

Table of Contents

Introduction.....	1
Number of Ambulatory Surgery Centers.....	1
Outpatient Visits and Revenue.....	2
Outpatient Procedures.....	3
Payer Mix.....	4
Operating and Total Margins.....	5
Individual Ambulatory Surgery Center Data.....	7
Regional Map.....	7
Footnotes.....	24
Explanation of Terms and Measures.....	25
Non-Compliant Ambulatory Surgery Centers.....	26

Key Findings

- The number of licensed ambulatory surgery centers (ASCs) in Pennsylvania has continued to grow. Nineteen ASCs opened and one closed between fiscal years 2008 and 2009 (FY08 and FY09), bringing the total to 262. In FY00, by comparison, there were only 72 ASCs statewide.
- During FY09, the net growth in the number of outpatient procedures performed at general acute care (GAC) outpatient units and ASCs combined increased 1.8%. From FY08 to FY09, the number of outpatient procedures performed at GAC outpatient units decreased 0.6%, while the number at ASCs increased 7.2%.
- There has been a 68.4% growth in the total number of outpatient procedures performed in Pennsylvania between FY00 and FY09. More than 65.1% of that growth has occurred at ASCs.
- The statewide average total margin for the ASCs increased less than two-tenths of a point from 26.08% in FY08 to 26.26% in FY09. The statewide average operating margin for the ASCs increased about two-tenths of a point from 26.00% in FY08 to 26.21% in FY09.

Introduction

On an annual basis, the Pennsylvania Health Care Cost Containment Council (PHC4) produces a series of financial reports that measure the financial health of Pennsylvania's hospitals and freestanding ambulatory surgery centers.

This is the second volume of a three-volume series. *Volume One*, released in May 2010, focused on the financial health of Pennsylvania's general acute care (GAC) hospitals. This report, *Volume Two*, concentrates on Pennsylvania's freestanding ambulatory surgery centers (ASCs). *Volume Three*, to be released later this year, will focus on non-GAC hospitals — freestanding rehabilitation hospitals, psychiatric hospitals, state psychiatric hospitals, long-term acute care hospitals and specialty hospitals. However, since both GAC and non-GAC hospitals can provide both inpatient and outpatient care, they are mentioned in this report to provide perspective on the overall outpatient care provided in the Commonwealth.

The reporting year for the ASCs in *Volume Two* is based on each facility's accounting year (fiscal year) that ended during 2009. For the majority of ASCs, the fiscal year is the calendar year ending on December 31, 2009. For those facilities that do not utilize a calendar year, the fiscal year typically ended on June 30, 2009.

Information in this report was derived from annual financial statements and data submissions, as well as quarterly ambulatory/outpatient procedure data supplied by each facility. Every reasonable effort has been made to ensure the accuracy of the information. Each facility had the opportunity to review its data and make changes, if necessary. The ultimate responsibility for data accuracy lies with the individual facility.

Number of Ambulatory Surgery Centers

Table 1 lists the total number of licensed ASCs, GAC hospitals, and non-GAC hospitals that operated in Pennsylvania during fiscal year 2009 (FY09). The number of ASCs is now more than one and a half times greater than the number of GAC hospitals.

Table 1
Number of Facilities, FY09

Facility Type	Number of Facilities
Ambulatory Surgery Centers	262
General Acute Care Hospitals	171
Non-GAC Hospitals	79
Total	512

The number of ASCs in Pennsylvania has continued to grow (Figure 1). Between FY08 and FY09, 19 ASCs opened and one closed, resulting in a net increase of 18 facilities. This brings the total to 262 licensed ASCs that operated during FY09. In FY00, by comparison, there were only 72 ASCs statewide.

Figure 1
Number of Ambulatory Surgery Centers

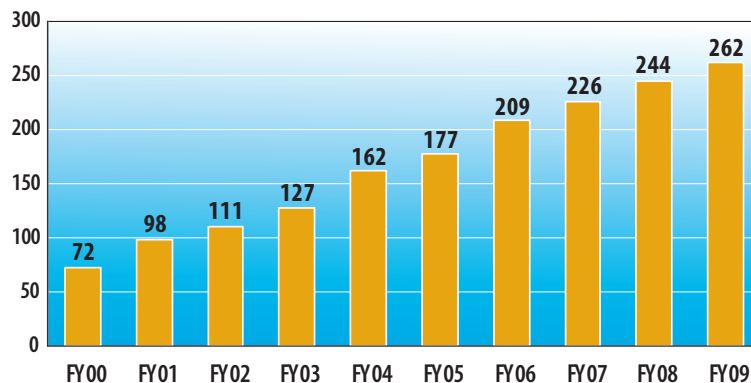


Figure 2
Growth in the Number of Ambulatory Surgery Centers
by Region

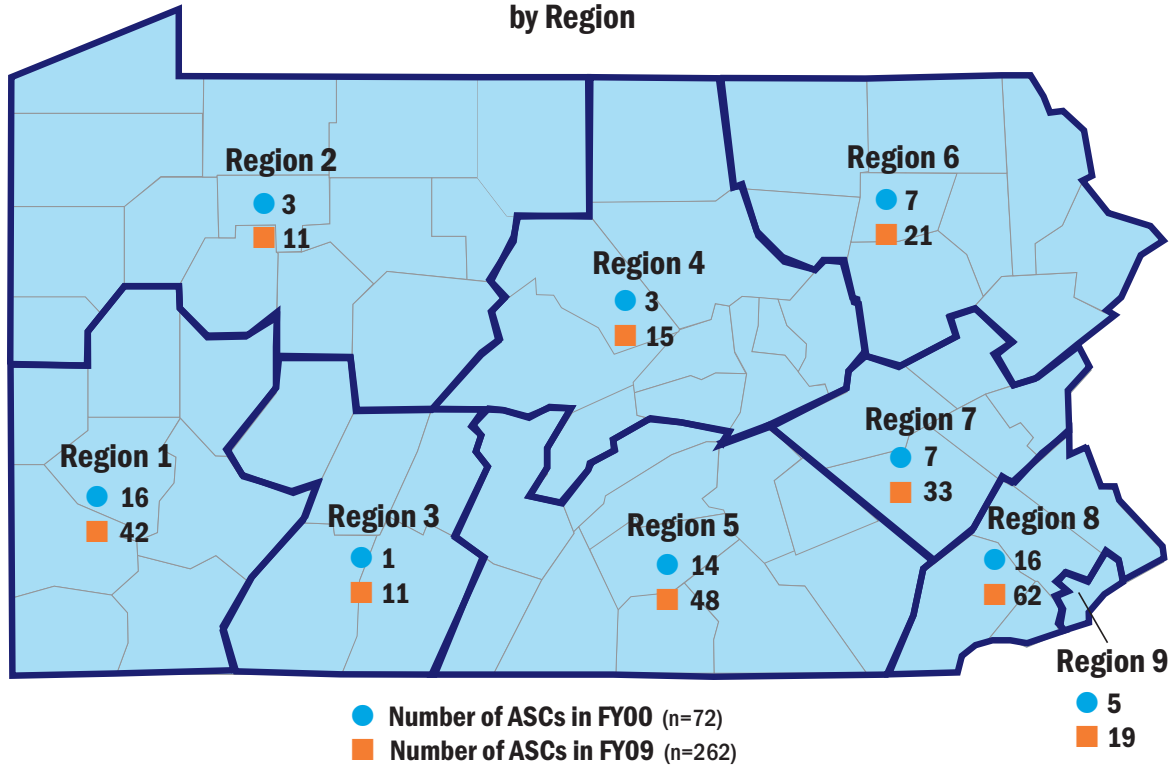


Figure 2 illustrates the growth in the number of ASCs by PHC4's nine regions from FY00 to FY09. During this period, Region 8, which includes the four counties surrounding Philadelphia, added the most new facilities of any region – 46 ASCs in total.

Outpatient Visits and Revenue

In FY09, there were 43.3 million outpatient visits reported by Pennsylvania ASCs, GAC hospitals, and non-GAC hospitals (Table 2). GAC hospitals were the predominate providers of outpatient care. They reported 40.0 million outpatient visits (including home health visits), which accounted for 92.4% of the total outpatient visits to all hospitals and ASCs. The 2.3 million outpatient visits at non-GAC hospitals accounted for 5.2% of the total

outpatient visits, while the 1.0 million outpatient visits at ASCs accounted for 2.4%.

Outpatient visits generated \$14.7 billion in statewide net outpatient revenue during FY09. GAC hospitals earned 91.7% of this revenue. Non-GAC hospitals and ASCs earned 1.9% and 6.4%, respectively.

The \$934.7 million in net patient revenue reported by ASCs during FY09 is equal to only about 6.9% of the outpatient revenue received by GAC hospitals. The outpatient revenue from ASCs and GAC hospitals combined increased 8.4% from \$13.3 billion in FY08 to \$14.4 billion in FY09.

There is a wide variation in the average outpatient revenue per visit across the facility categories. A primary reason for the diversity in revenue per visit among the facility types is the variation in

Table 2
Outpatient Visits and Revenue, FY09
by Facility Type

Facility Type	Visits	Outpatient Revenue (thousands)	Average Outpatient Revenue per Visit
Ambulatory Surgery Centers	1,023,804	\$934,691	\$913
General Acute Care Hospitals	39,969,108	\$13,463,139	\$337
Non-GAC Hospitals*	2,267,178	\$284,316	\$125
Statewide	43,260,090	\$14,682,146	\$339

* Includes rehabilitation hospitals, psychiatric hospitals (excluding state psychiatric facilities), long-term acute care hospitals and specialty hospitals.

level of resources provided per visit. For example, a patient may receive care as a series of visits comprised of relatively short treatments (e.g., psychotherapy) in a hospital outpatient setting, while a patient at an ASC may be subject to an entire surgical procedure during a single visit. The average outpatient revenue per visit at GAC hospitals reflects reimbursements for a wide range of outpatient services. As a group, ASCs provide a wide variety of outpatient services at varying levels of resource intensity; however, on an individual basis, ASCs tend to specialize in specific surgical procedures, e.g., endoscopy, laser surgery, ophthalmology, spine care, etc.

Outpatient Procedures

There continues to be a significant shift in the settings in which outpatient (ambulatory) procedures are being performed. Outpatient procedures include surgical and nonsurgical procedures.¹ Surgical procedures, such as appendix or gallbladder removal, are performed in a general operating room or a room dedicated to ambulatory surgery. Nonsurgical (diagnostic and therapeutic) procedures include procedures like those performed in the endoscopy/GI unit to view the inside of the digestive tract or procedures that are performed in the cardiac catheterization laboratory to view the arteries of the heart.

Table 3
Outpatient Procedures¹
by Facility Type

Facility Type	FY00		FY09	
	Procedures	Percent of Total	Procedures	Percent of Total
Ambulatory Surgery Centers	164,690	10.2%	884,272	32.5%
General Acute Care Hospitals	1,450,087	89.8%	1,835,096	67.5%
Statewide	1,614,777		2,719,368	

¹ The outpatient procedure codes captured by PHC4 are available on the PHC4 website at <http://www.phc4.org/services/datarequests/procedures.htm>.

During FY09, 2.7 million outpatient procedures were performed at ASCs and GAC hospitals (Table 3). ASCs performed 32.5% or 884,272 of these procedures. This reflects a 22.3-point increase in the ASC share of total outpatient procedures in the past decade. In FY00, ASCs performed 10.2% or 164,690 of the total 1.6 million outpatient procedures performed in Pennsylvania.

There was a 68.4% growth in the total number of outpatient procedures performed at ASCs and outpatient units of GAC hospitals between FY00 and FY09. More than 65.1% of that growth occurred at ASCs.

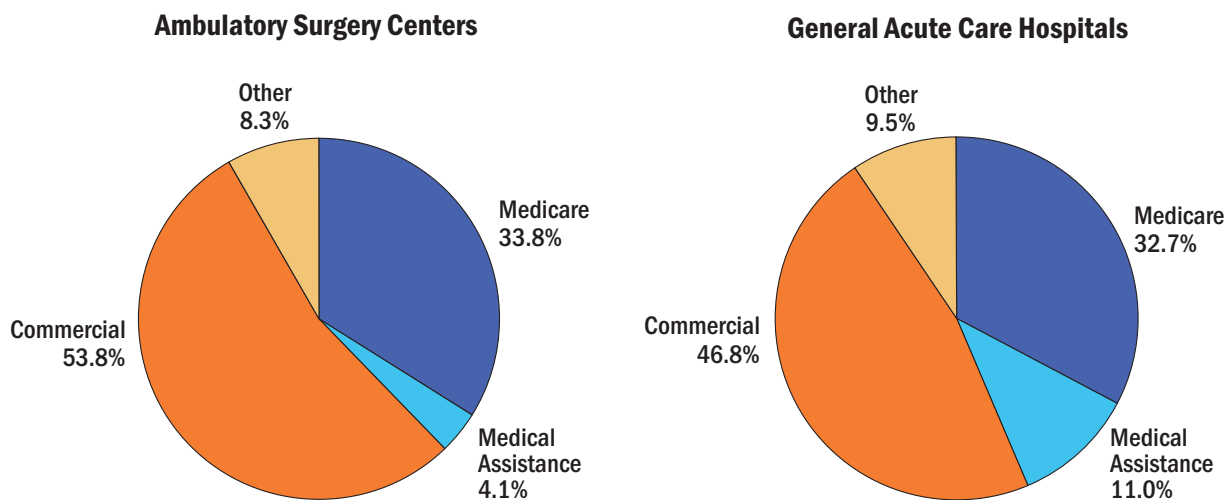
During FY09, the net growth in the number of outpatient procedures performed at GAC outpatient units and ASCs combined increased 1.8%. However, from FY08 to FY09, the number of outpatient procedures performed at GAC outpa-

tient units decreased 0.6%, while the number at ASCs increased 7.2%.

Payer Mix

Figure 3 presents a comparison of the payer mix for the outpatient procedures performed at both the ASCs and GAC outpatient units. The greatest differences in the payer mix between the two facility types are in the portion of patients participating in the Medical Assistance (MA) program and patients covered by commercial health insurance plans. During FY09, the GAC hospitals reported that 11.0% of their patients undergoing an outpatient procedure were MA participants. Only 4.1% of ASC patients were covered by MA. The ASCs reported 53.8% of their patients were covered by commercial health insurance plans, and the GAC hospitals reported 46.8%

Figure 3
Statewide Outpatient Procedures¹
at Ambulatory Surgery Centers and General Acute Care Hospitals, FY09
by Payer



¹ The outpatient procedure codes captured by PHC4 are available on the PHC4 website at <http://www.phc4.org/services/datarequests/procedures.htm>.

of their outpatients were covered by commercial plans.

The slightly higher percentage of revenue from the Medicare program at ASCs is consistent with the difference in the average patient age at ASCs and GAC outpatient units. In FY09, the mean age of patients undergoing an outpatient procedure at an ASC was 56.7 years, compared to 52.0 years for patients at GAC outpatient units.

Operating and Total Margins

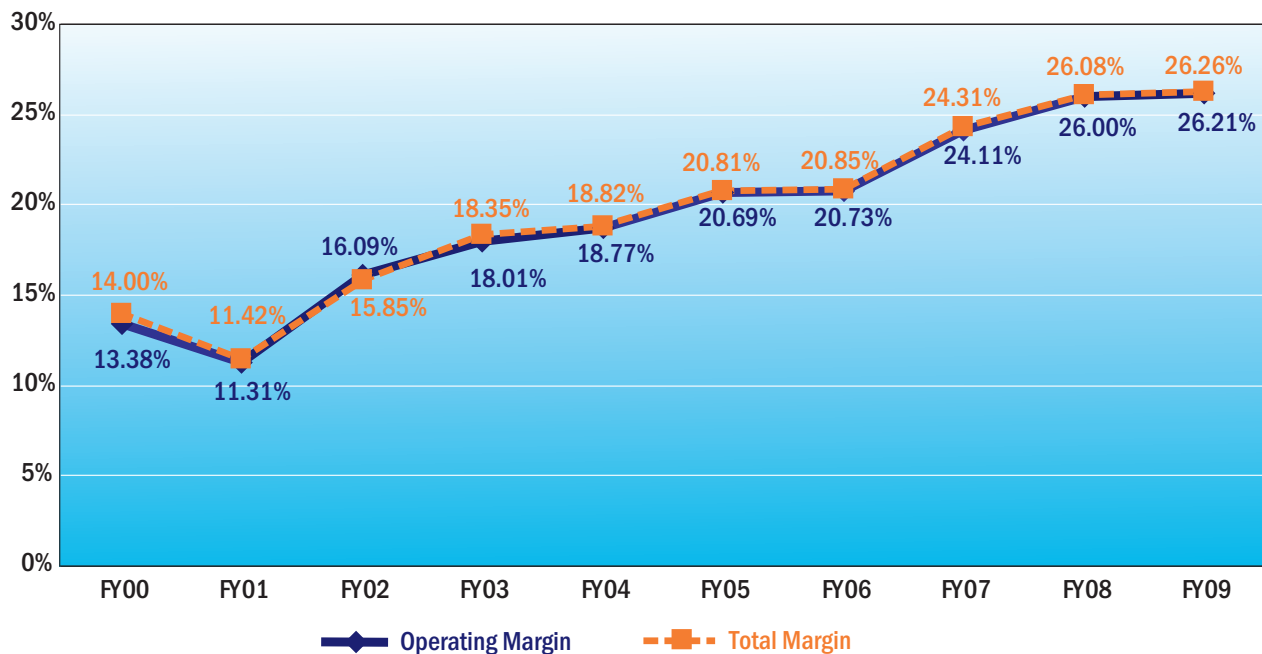
The statewide average operating and total margins for ASCs increased by 0.21 and 0.18 of a point, respectively, in FY09 (Figure 4). The statewide average operating margin increased from 26.00% in FY08 to 26.21% in FY09. The statewide average total margin rose from 26.08% in FY08 to 26.26% in FY09. After a slight decrease

in FY01, the statewide total margin increased almost 14.84 points or an average of about 1.86 points per year between FY01 and FY09.

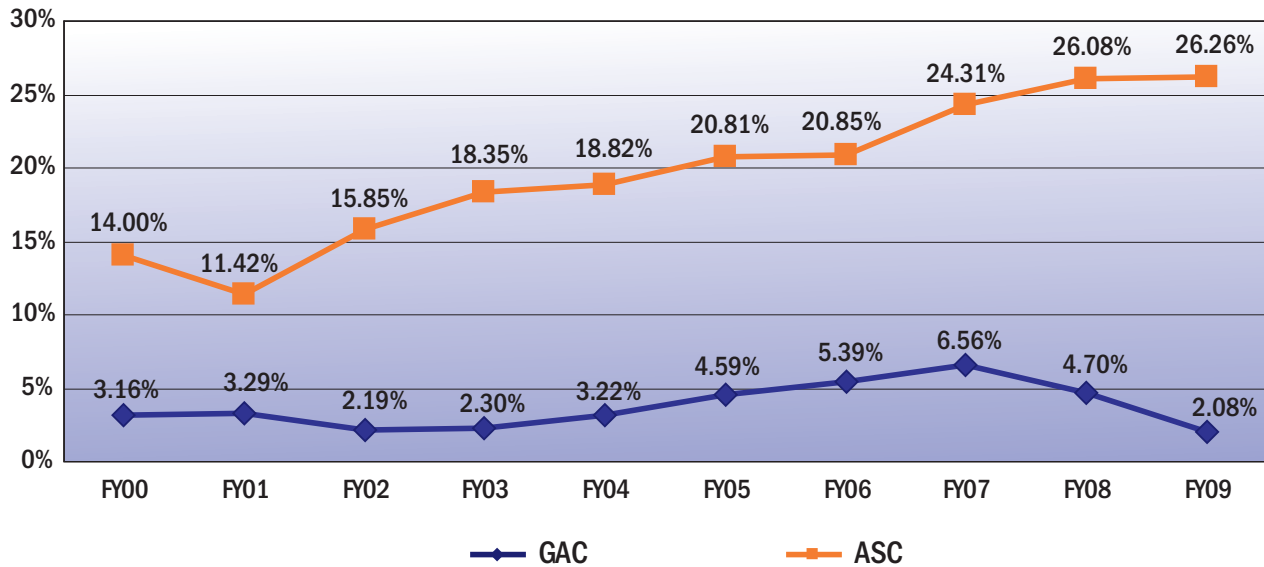
Figure 5 displays the statewide average total margins for GAC hospitals and ASCs. (Statewide average total margins for non-GAC hospitals will be reported in PHC4's *Financial Analysis, Volume Three* to be released later this year.) The 26.26% statewide average total margin for ASCs in FY09 is the highest average margin that they have posted in over ten years. The statewide total margin at GAC hospitals has fallen for the past two years after increasing for five straight years and peaking in FY07. Overall, the average total margin at GAC hospitals has declined by 4.48 points from 6.56% in FY07 to 2.08% in FY09.

It is important to point out that the statewide average margins for ASCs cannot be directly

Figure 4
Statewide Operating and Total Margins at Ambulatory Surgery Centers



**Figure 5
Statewide Total Margins
at Ambulatory Surgery Centers and General Acute Care Hospitals**



compared to the average margins for the GAC hospitals for two reasons.

First, some physician owners of surgery centers may receive all or part of their compensation as a distribution of net income, instead of salaries or fees. Consequently, such distributions are not reported as an operating expense that would reduce operating and total margins. In contrast, physician compensation paid by GAC hospitals is almost exclusively reported as salary or professional service expenses.

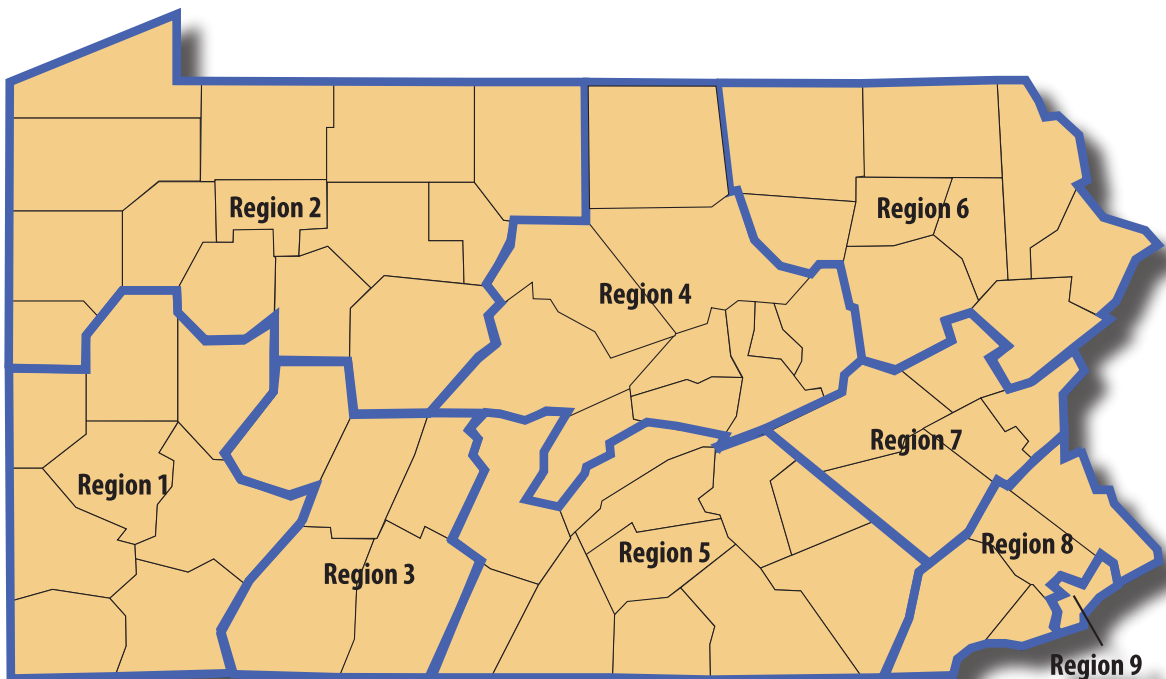
Second, the majority of ASCs are limited liability partnerships or Sub-Chapter S corporations that are not subject to income taxes. Income taxes are generally paid as personal income tax by the owners. Consequently, the total margin for most of the for-profit ASCs does not reflect any income tax expenses. In contrast, the total margins for the state's for-profit GAC hospitals are calculated after the tax expense is deducted.

Individual Ambulatory Surgery Center Data

There were 262 licensed ASCs that operated in Pennsylvania during FY09. Of these, 246 ASCs submitted the required financial data to PHC4. Fifteen ASCs did not submit any data, and one submitted partial data.

The tables on the following pages provide facility-specific financial data for the 246 ASCs that reported data. The facilities have been arranged by PHC4's nine regions. Statewide and regional averages for the ASCs are presented. The averages that are expressed as a percentage (e.g., "3-year Average Change in NPR" and "Operating Margin") are calculated as if the entire region or state were a single reporting entity. For example, the statewide average operating margin is calculated by adding the operating income and operating revenue for all facilities in the state. The statewide operating income is divided by the statewide total operating revenue to yield a statewide average operating margin.

Included in these tables are the FY09 operating and total margins for each individual facility. Each facility's corresponding operating income, total income and total operating revenue, expressed in dollars, can be found on PHC4's website at www.phc4.org. (Note: Other operating revenue must be included with net patient revenue to calculate the operating income that is used for operating margin.)



Individual Ambulatory Surgery Center Data

Region/Ambulatory Surgery Center	Net Patient Revenue NPR (thousands)				3-yr Avg Change in NPR FY06-FY09	Total Operating Expenses TOE (thousands)				3-yr Avg Change in TOE FY06-FY09
	FY09	FY08	FY07	FY06		FY09	FY08	FY07	FY06	
Statewide Average	\$3,784	\$3,622	\$3,358	\$2,987	8.89%	\$2,810	\$2,700	\$2,568	\$2,387	5.90%
Region 1 Average	\$3,632	\$3,271	\$3,154	\$2,624	12.81%	\$2,753	\$2,482	\$2,407	\$2,208	8.23%
1 20/20 SC ^{1,10,13}	\$2,222	\$2,020	\$1,760	\$702	72.19%	\$1,219	\$1,313	\$902	\$464	54.20%
1 Aestique ASC ^{1,10}	\$1,761	\$2,053	\$1,934	\$1,747	0.25%	\$1,731	\$2,014	\$1,950	\$1,740	-0.18%
1 Assoc Kidney/Hypertension ^{1,4,10}	\$906	NA	NA	NA	NA	\$762	NA	NA	NA	NA
1 Associates SC ^{1,10}	\$4,785	\$4,689	NA	NA	NA	\$3,664	\$3,705	NA	NA	NA
1 Butler ASC ^{1,3,10}	\$7,760	\$7,461	\$6,655	\$3,912	NA	\$5,224	\$4,841	\$4,298	\$2,942	NA
1 CHP North SC ^{7,11}	\$10,451	\$9,690	\$8,683	\$7,660	12.15%	\$8,391	\$6,086	\$4,995	\$4,939	23.30%
1 CHP South SC ^{3,7,11}	\$4,143	\$4,146	\$3,532	\$1,858	NA	\$3,526	\$2,419	\$1,744	\$777	NA
1 Dermatology & Cosmetic SC ^{1,10}	\$2,055	\$1,405	\$920	\$758	57.10%	\$2,054	\$1,545	\$915	\$754	57.50%
1 Digestive Hlth Endoscopy ^{1,10}	\$2,564	\$2,474	\$2,488	\$2,395	2.35%	\$1,236	\$1,221	\$1,358	\$1,209	0.76%
1 East Side SC ^{1,10,13}	\$2,829	NR	NA	NA	NA	\$3,367	NR	NA	NA	NA
1 Excela Health Norwin ^{3,7}	\$2,752	\$228	NR	\$1,557	25.57%	\$2,482	\$335	NR	\$1,414	25.18%
1 Four Seasons Endoscopy ^{1,10}	\$3,366	\$3,149	\$2,942	\$2,877	5.67%	\$1,542	\$1,381	\$1,245	\$1,252	7.73%
1 Gamma SC ^{1,10,13}	\$2,561	\$1,746	\$1,656	NA	NA	\$2,589	\$2,119	\$1,993	NA	NA
1 Heritage Valley SC ⁷	\$5,060	\$4,998	\$5,119	\$4,920	0.95%	\$5,215	\$5,233	\$4,818	\$4,653	4.03%
1 Laurel Surgical Center ^{1,10,13}	\$5,346	\$4,948	\$4,840	\$4,607	5.34%	\$3,953	\$3,938	\$3,161	\$2,874	12.51%
1 Leo R. McCafferty Plastic ^{1,10}	\$363	\$380	\$308	\$252	14.62%	\$286	\$281	\$312	\$339	-5.24%
1 Lowry SC ^{1,10}	\$816	\$982	\$1,136	\$1,135	-9.37%	\$874	\$983	\$1,160	\$1,136	-7.68%
1 McCandless Endoscopy ^{1,4,10}	\$629	NA	NA	NA	NA	\$729	NA	NA	NA	NA
1 Mt Lebanon SC	\$4,039	\$2,221	\$2,208	\$2,024	33.19%	\$2,006	\$1,887	\$2,074	\$1,928	1.34%
1 Mt Pleasant SC ^{1,10,13}	\$1,846	\$1,535	\$1,088	\$1,143	20.50%	\$2,228	\$2,008	\$1,808	\$1,865	6.48%
1 North Shore Endoscopy ^{1,10}	\$1,905	\$2,446	\$2,003	\$1,446	10.58%	\$1,164	\$1,280	\$1,240	\$1,044	3.82%
1 Radiance ^{1,10}	\$3,294	\$3,487	\$2,720	\$1,597	35.44%	\$2,708	\$2,899	\$2,472	\$1,658	21.11%
1 Renal Endocrine Assoc ^{1,4,10}	\$1,267	NA	NA	NA	NA	\$779	NA	NA	NA	NA
1 SC Cranberry ^{1,10}	\$2,944	\$2,220	\$2,105	\$2,050	14.53%	\$2,517	\$2,134	\$2,042	\$1,996	8.70%
1 SC Edgeworth Commons ^{1,10,13}	\$3,617	NR	\$2,985	\$2,567	13.64%	\$3,548	NR	\$2,916	\$2,621	11.79%
1 SC Ligonier	\$696	\$761	\$690	\$743	-2.11%	\$685	\$713	\$678	\$695	-0.48%
1 Shadyside SC ^{1,10}	\$532	\$428	\$396	\$381	13.14%	\$447	\$398	\$289	\$378	6.15%
1 South Hills Endoscopy Ctr ^{1,10}	\$2,822	\$2,744	\$2,456	\$1,879	16.74%	\$1,558	\$1,620	\$1,702	\$1,325	5.88%
1 Southwestern ASC ^{1,10,13}	\$3,662	NR	NR	\$3,025	7.01%	\$3,004	NR	NR	\$2,925	0.90%
1 Southwestern Endoscopy ^{1,10,13}	\$4,200	\$3,966	\$3,744	\$3,252	9.72%	\$2,363	\$2,189	\$2,133	\$1,899	8.13%
1 Southwestern PA Eye SC ^{1,10}	\$2,768	\$2,976	\$2,949	\$2,921	-1.74%	\$2,173	\$2,083	\$1,979	\$1,876	5.27%

See map of regions on page 7 and footnotes on page 24.

Individual Ambulatory Surgery Center Data

Ambulatory Surgery Center	Operating Margin FY09	Total Margin FY09	3-yr Average Total Margin FY07-FY09	Medicare Share of NPR FY09	Medical Assistance Share of NPR FY09	Visits FY09
Statewide Average	26.21%	26.26%	25.63%	24.50%	3.64%	4,162
Region 1 Average	24.70%	24.96%	24.94%	28.75%	4.33%	3,901
20/20 SC ^{1, 10, 13}	45.15%	45.15%	42.78%	58.06%	2.34%	2,453
Aestique ASC ^{1, 10}	1.72%	1.79%	1.41%	16.73%	1.17%	1,520
Assoc Kidney/Hypertension ^{1, 4, 10}	15.92%	15.92%	NA	43.50%	0.09%	585
Associates SC ^{1, 10}	23.44%	23.44%	NA	55.99%	2.23%	6,598
Butler ASC ^{1, 3, 10}	32.68%	32.69%	34.58%	24.86%	3.60%	9,334
CHP North SC ^{7, 11}	19.71%	19.71%	32.45%	0.00%	17.09%	6,185
CHP South SC ^{3, 7, 11}	14.89%	14.89%	34.95%	0.00%	10.25%	2,425
Dermatology & Cosmetic SC ^{1, 10}	0.05%	0.05%	0.13%	43.64%	0.00%	3,737
Digestive Hlth Endoscopy ^{1, 10}	51.81%	51.86%	49.40%	21.15%	0.12%	4,423
East Side SC ^{1, 10, 13}	-19.04%	-18.89%	NA	39.15%	2.66%	2,032
Excelsa Health Norwin ^{3, 7}	9.81%	9.81%	NR	31.94%	3.23%	3,741
Four Seasons Endoscopy ^{1, 10}	54.18%	54.32%	56.03%	27.22%	0.38%	5,652
Gamma SC ^{1, 10, 13}	2.20%	2.25%	-7.23%	14.77%	0.71%	3,225
Heritage Valley SC ⁷	-3.06%	-3.06%	-0.58%	49.23%	2.78%	3,731
Laurel Surgical Center ^{1, 10, 13}	26.05%	26.06%	27.04%	19.43%	2.47%	5,551
Leo R. McCafferty Plastic ^{1, 10}	21.18%	21.18%	16.31%	2.09%	0.00%	430
Lowry SC ^{1, 10}	-7.20%	-7.17%	-2.73%	17.98%	0.00%	1,383
McCandless Endoscopy ^{1, 4, 10}	-16.04%	-16.04%	NA	9.54%	1.48%	1,239
Mt Lebanon SC	50.33%	50.33%	29.76%	55.24%	0.58%	3,076
Mt Pleasant SC ^{1, 10, 13}	3.95%	3.95%	-5.34%	56.00%	2.00%	1,875
North Shore Endoscopy ^{1, 10}	38.93%	38.93%	42.02%	11.78%	3.64%	3,419
Radiance ^{1, 10}	17.85%	17.85%	15.27%	6.34%	0.00%	2,213
Renal Endocrine Assoc ^{1, 4, 10}	38.50%	38.50%	NA	48.05%	1.31%	729
SC Cranberry ^{1, 10}	14.50%	14.50%	7.93%	60.43%	0.93%	4,083
SC Edgeworth Commons ^{1, 10, 13}	1.92%	2.01%	NR	18.23%	4.29%	2,680
SC Ligonier	1.86%	1.86%	6.15%	66.09%	5.89%	1,139
Shadyside SC ^{1, 10}	15.85%	15.85%	16.42%	11.55%	0.00%	318
South Hills Endoscopy Ctr ^{1, 10}	44.78%	44.84%	39.37%	23.31%	0.02%	7,825
Southwestern ASC ^{1, 10, 13}	17.96%	17.96%	NR	8.61%	27.74%	3,235
Southwestern Endoscopy ^{1, 10, 13}	43.74%	43.74%	43.87%	23.07%	15.13%	9,831
Southwestern PA Eye SC ^{1, 10}	21.53%	21.53%	28.28%	70.46%	2.76%	3,240

See map of regions on page 7 and footnotes on page 24.

Individual Ambulatory Surgery Center Data

Region/Ambulatory Surgery Center	Net Patient Revenue NPR (thousands)				3-yr Avg Change in NPR FY06-FY09	Total Operating Expenses TOE (thousands)				3-yr Avg Change in TOE FY06-FY09
	FY09	FY08	FY07	FY06		FY09	FY08	FY07	FY06	
Statewide Average	\$3,784	\$3,622	\$3,358	\$2,987	8.89%	\$2,810	\$2,700	\$2,568	\$2,387	5.90%
1 Spartan Health SC ^{1, 10, 13}	\$2,473	\$2,238	\$1,592	\$819	67.28%	\$2,236	\$2,142	\$1,649	\$1,749	9.28%
1 Three Rivers Endoscopy ^{1, 10}	\$4,637	\$4,717	\$3,888	\$3,782	7.54%	\$2,424	\$2,543	\$2,186	\$2,141	4.42%
1 Tri County Surgical ^{1, 10}	\$1,041	\$1,098	\$979	\$755	12.63%	\$982	\$1,031	\$925	\$754	10.07%
1 Tri-State SC ^{1, 10, 13}	\$7,631	\$7,979	\$5,279	\$4,785	19.83%	\$5,259	\$4,943	\$4,391	\$4,460	5.97%
1 UPMC Monroeville SC	\$6,463	\$6,179	\$8,262	\$8,095	-6.72%	\$6,680	\$6,797	\$7,468	\$7,112	-2.03%
1 UPMC South SC ³	\$4,587	\$5,037	\$5,055	\$2,836	NA	\$3,498	\$3,751	\$3,587	\$1,833	NA
1 UPMC St. Margaret OP Ctr	\$17,253	NR	NA	NA	NA	\$8,986	NR	NA	NA	NA
1 Waterfront SC ^{1, 10}	\$4,813	\$5,172	\$5,061	\$4,579	1.71%	\$3,536	\$3,580	\$3,717	\$3,445	0.89%
1 Western PA SC ^{1, 10, 13}	\$7,307	\$7,187	\$7,303	\$6,825	2.36%	\$5,626	\$5,733	\$5,423	\$5,152	3.06%
1 Zitelli Brodland Central ^{1, 10}	\$1,238	\$878	\$806	\$819	17.07%	\$1,238	\$878	\$806	\$818	17.10%
1 Zitelli Brodland South ^{1, 10}	\$1,150	\$859	\$788	\$701	21.33%	\$1,150	\$859	\$787	\$701	21.34%
Region 2 Average	\$4,069	\$4,550	\$5,389	\$5,266	-7.58%	\$3,413	\$3,661	\$4,175	\$4,009	-4.96%
2 Community SC ¹⁰	\$1,157	\$826	NA	NA	NA	\$852	\$709	NA	NA	NA
2 Greater Erie SC ^{1, 2, 4, 10}	\$507	NA	NA	NA	NA	\$1,648	NA	NA	NA	NA
2 Hamot SC ¹⁰	\$12,588	\$11,882	\$10,707	\$9,557	10.57%	\$10,504	\$9,593	\$8,637	\$7,520	13.23%
2 Laurel Laser & SC ^{1, 7, 10}	\$2,823	\$2,552	\$2,755	\$3,382	-5.51%	\$2,080	\$2,119	\$2,161	\$2,231	-2.26%
2 Lawrence County SC ^{1, 2, 10, 11, 14}	\$896	\$907	\$1,159	\$1,047	NA	\$745	\$824	\$1,080	\$1,042	NA
2 Regional ASC ^{1, 10, 13}	\$2,807	\$3,065	\$2,569	\$2,229	8.65%	\$1,941	\$1,938	\$1,682	\$1,780	3.02%
2 Saint Vincent Endoscopy ^{1, 4, 10, 13}	\$1,569	NA	NA	NA	NA	\$1,446	NA	NA	NA	NA
2 Saint Vincent SC Erie ¹	\$11,264	\$10,835	\$9,990	\$10,103	3.83%	\$8,831	\$8,552	\$8,151	\$7,990	3.51%
2 Surgery & Laser ^{1, 10}	\$2,341	\$2,991	\$3,427	\$3,468	-10.82%	\$1,615	\$1,914	\$2,032	\$1,921	-5.31%
2 Village SC ^{1, 10}	\$6,615	\$6,598	\$7,112	\$7,076	-2.17%	\$5,437	\$5,386	\$5,479	\$5,582	-0.87%
Region 3 Average	\$3,716	\$3,230	\$3,646	\$2,518	15.87%	\$3,002	\$2,582	\$2,921	\$1,961	17.71%
3 Allegheny Reg Endoscopy ^{1, 3, 10, 13}	\$3,687	\$3,616	\$3,320	\$2,102	NA	\$1,852	\$1,692	\$1,722	\$1,470	NA
3 Allegheny SC ^{1, 10}	\$2,513	\$2,589	\$2,059	\$1,948	9.67%	\$1,271	\$1,269	\$997	\$931	12.14%
3 Altoona Regional SC	\$10,637	\$10,453	\$10,974	\$9,015	6.00%	\$8,683	\$8,307	\$8,764	\$7,981	2.93%
3 Altoona Specialty Center ^{1, 10, 13}	\$3	\$5	NR	\$1	36.51%	\$27	\$38	NR	\$19	14.91%
3 Center for Surgical Arts ^{1, 10}	\$932	\$1,121	\$869	\$717	9.98%	\$934	\$1,030	\$918	\$719	9.98%
3 Digestive Health/Indiana ^{1, 3, 10}	\$1,601	\$1,544	\$1,468	\$976	NA	\$1,709	\$1,218	\$1,168	\$105	NA
3 Indiana AS Associates ^{1, 10}	\$3,295	\$3,643	\$3,691	\$3,909	-5.23%	\$2,432	\$2,273	\$2,165	\$2,172	3.98%
3 Laurel Laser & SC/Altoona ^{1, 7, 10}	\$1,868	\$1,908	NA	NA	NA	\$1,322	\$1,529	NA	NA	NA

See map of regions on page 7 and footnotes on page 24.

Individual Ambulatory Surgery Center Data

Ambulatory Surgery Center	Operating Margin FY09	Total Margin FY09	3-yr Average Total Margin FY07-FY09	Medicare Share of NPR FY09	Medical Assistance Share of NPR FY09	Visits FY09
Statewide Average	26.21%	26.26%	25.63%	24.50%	3.64%	4,162
Spartan Health SC ^{1, 10, 13}	9.58%	9.61%	4.48%	55.03%	10.03%	3,569
Three Rivers Endoscopy ^{1, 10}	47.73%	47.79%	46.18%	31.18%	1.14%	8,265
Tri County Surgical ^{1, 10}	5.75%	5.75%	5.81%	34.80%	0.00%	919
Tri-State SC ^{1, 10, 13}	31.28%	31.44%	30.43%	21.28%	5.74%	5,498
UPMC Monroeville SC	-3.36%	3.83%	2.07%	38.54%	2.00%	6,933
UPMC South SC ³	29.66%	29.66%	31.58%	37.41%	1.60%	3,081
UPMC St. Margaret OP Ctr	47.92%	47.92%	NA	25.60%	1.12%	11,712
Waterfront SC ^{1, 10}	26.55%	26.56%	28.29%	19.50%	1.59%	5,660
Western PA SC ^{1, 10, 13}	23.50%	23.50%	23.47%	21.68%	2.04%	5,291
Zitelli Brodland Central ^{1, 10}	0.01%	0.01%	0.02%	72.19%	0.00%	2,563
Zitelli Brodland South ^{1, 10}	0.01%	0.01%	0.03%	71.81%	0.00%	2,430
Region 2 Average	16.18%	16.52%	19.65%	28.74%	7.66%	4,873
Community SC ¹⁰	26.71%	26.71%	NA	66.43%	0.65%	101
Greater Erie SC ^{1, 2, 4, 10}	-210.66%	-210.66%	NA	1.09%	0.00%	1,092
Hamot SC ¹⁰	16.58%	16.71%	18.88%	19.13%	6.88%	16,814
Laurel Laser & SC ^{1, 7, 10}	26.33%	26.33%	21.94%	55.60%	2.63%	2,943
Lawrence County SC ^{1, 2, 10, 11, 14}	16.88%	21.98%	12.36%	NR	NR	NR
Regional ASC ^{1, 10, 13}	30.87%	30.90%	34.26%	28.69%	2.80%	2,808
Saint Vincent Endoscopy ^{1, 4, 10, 13}	7.82%	7.83%	NA	18.04%	3.36%	3,007
Saint Vincent SC Erie ¹	21.60%	21.97%	20.81%	35.60%	13.97%	8,927
Surgery & Laser ^{1, 10}	31.02%	31.03%	36.52%	20.07%	2.11%	2,874
Village SC ^{1, 10}	17.81%	17.92%	20.05%	20.76%	8.35%	6,941
Region 3 Average	19.75%	19.77%	20.46%	23.70%	4.38%	4,390
Allegheny Reg Endoscopy ^{1, 3, 10, 13}	49.77%	49.80%	50.56%	25.17%	6.76%	6,993
Allegheny SC ^{1, 10}	49.43%	49.47%	50.83%	25.89%	8.62%	4,248
Altoona Regional SC	18.37%	18.37%	19.68%	15.37%	3.83%	5,144
Altoona Specialty Center ^{1, 10, 13}	0.41%	0.41%	NR	0.00%	0.00%	5
Center for Surgical Arts ^{1, 10}	-0.17%	-0.17%	1.40%	0.89%	0.00%	484
Digestive Health/Indiana ^{1, 3, 10}	-6.76%	-6.50%	11.64%	14.58%	0.00%	1,628
Indiana AS Associates ^{1, 10}	31.43%	31.43%	40.38%	24.69%	2.09%	3,403
Laurel Laser & SC/Altoona ^{1, 7, 10}	29.26%	29.26%	NA	39.19%	1.77%	1,981

See map of regions on page 7 and footnotes on page 24.

Individual Ambulatory Surgery Center Data

Region/Ambulatory Surgery Center	Net Patient Revenue NPR (thousands)				3-yr Avg Change in NPR FY06-FY09	Total Operating Expenses TOE (thousands)				3-yr Avg Change in TOE FY06-FY09
	FY09	FY08	FY07	FY06		FY09	FY08	FY07	FY06	
Statewide Average	\$3,784	\$3,622	\$3,358	\$2,987	8.89%	\$2,810	\$2,700	\$2,568	\$2,387	5.90%
3 Lee ASC ^{3,7}	\$10,083	\$5,065	\$4,559	NA	NA	\$9,083	\$5,827	\$4,848	NA	NA
3 Ophthalmic Associates SC ^{1,10}	\$2,198	\$1,885	\$2,146	NA	NA	\$1,651	\$1,510	\$1,971	NA	NA
3 Plastic Surgical Assoc ^{1,10}	\$4,061	\$3,705	\$3,731	\$3,980	0.67%	\$4,065	\$3,712	\$3,736	\$3,998	0.56%
Region 4 Average	\$4,735	\$4,364	\$3,241	\$3,889	7.25%	\$3,311	\$3,243	\$2,655	\$3,330	-0.19%
4 Betz Ophthalmology ^{1,10,13}	\$506	\$916	\$621	NA	NA	\$286	\$298	\$262	NA	NA
4 Central PA Endoscopy Ctr ^{1,10,13}	\$2,140	\$2,040	\$1,583	NA	NA	\$2,140	\$2,040	\$1,424	NA	NA
4 Endoscopy PA ^{1,10}	\$1,617	\$1,678	\$1,739	\$2,024	-6.70%	\$1,805	\$1,843	\$1,968	\$2,351	-7.74%
4 Evangelical ASC ^{1,10}	\$5,693	\$5,891	\$5,810	\$6,703	-5.02%	\$5,225	\$5,339	\$5,279	\$5,564	-2.03%
4 Geisinger Endo & SC ^{3,7}	\$2,324	\$2,522	\$1,574	NA	NA	\$1,541	\$1,217	\$1,173	NA	NA
4 Geisinger OP Woodbine	\$25,860	\$19,805	\$13,512	\$9,779	54.81%	\$16,040	\$13,613	\$11,242	\$9,538	22.72%
4 Lewisburg Plastic & Laser ^{1,10,13}	\$369	\$335	\$341	\$312	6.07%	\$357	\$277	\$360	\$332	2.44%
4 Mifflin County Com SC ^{1,10}	\$752	\$948	\$850	\$808	-2.33%	\$835	\$825	\$863	\$830	0.21%
4 Mount Nittany SC	\$12,393	\$9,814	\$7,928	\$8,249	16.74%	\$7,386	\$6,885	\$6,195	\$6,346	5.46%
4 SC Central PA ^{1,10,13}	\$4,294	\$3,565	\$2,766	\$2,243	30.46%	\$2,985	\$2,563	\$1,775	\$1,276	44.66%
4 Susquehanna Endoscopy ^{2,4,10}	\$136	NA	NA	NA	NA	\$173	NA	NA	NA	NA
4 Susquehanna SC ¹⁰	\$950	\$996	\$868	\$684	13.01%	\$821	\$911	\$792	\$800	0.90%
4 UOC Surgical Services ^{1,10}	\$4,518	\$3,852	\$4,453	\$4,195	2.57%	\$3,453	\$3,111	\$3,072	\$2,933	5.91%
Region 5 Average	\$4,144	\$3,895	\$3,592	\$3,064	11.74%	\$3,068	\$2,924	\$2,770	\$2,474	8.00%
5 Apple Hill SC ¹⁰	\$11,705	\$11,084	\$11,029	\$12,335	-1.70%	\$9,308	\$8,982	\$8,546	\$9,131	0.65%
5 Carlisle Endoscopy ^{1,10}	\$2,502	\$2,351	\$2,330	\$2,249	3.75%	\$2,504	\$2,357	\$2,313	\$2,252	3.74%
5 Carlisle Outpatient SC ^{1,3,7,10,13}	\$2,014	\$2,046	\$3,868	\$2,266	-3.71%	\$1,168	\$1,163	\$3,701	\$1,918	-13.03%
5 Center for Spine Care ^{1,7,10}	\$842	\$963	\$1,067	\$991	-5.00%	\$794	\$797	\$836	\$737	2.57%
5 Center Reproductive ^{1,10}	\$1,499	\$1,346	\$1,313	\$1,295	5.25%	\$1,213	\$1,091	\$1,065	\$977	8.07%
5 Chambersburg Endoscopy ^{1,3,10}	\$2,511	\$2,426	\$2,338	\$861	NA	\$1,547	\$1,533	\$1,590	\$1,254	NA
5 Crossroads SC ^{1,4,10}	\$3,709	NA	NA	NA	NA	\$4,705	NA	NA	NA	NA
5 Cumberland SC ^{1,10,13}	\$1,244	\$1,125	\$1,081	\$1,466	-5.06%	\$699	\$579	\$952	\$1,423	-16.96%
5 Digestive Disease Inst ^{1,10,13}	\$2,566	\$2,633	\$2,455	\$2,398	2.34%	\$2,575	\$2,698	\$2,429	\$2,388	2.61%
5 East York Eye SC ^{1,3,10,13}	\$119	\$45	NA	NA	NA	\$285	\$302	NA	NA	NA
5 Elmwood Endoscopy Center ^{1,10}	\$757	\$715	\$669	\$281	56.40%	\$756	\$724	\$726	\$546	12.78%
5 Endoscopy Ctr/Central PA ^{1,10}	\$1,277	\$1,273	\$1,147	\$1,137	4.11%	\$1,115	\$1,074	\$995	\$1,012	3.38%
5 Eyes of York SC ^{1,10}	\$1,392	\$1,092	\$998	\$651	37.91%	\$1,102	\$1,049	\$917	\$766	14.58%
5 Foot and Ankle SC ^{1,10}	\$4,047	\$3,645	\$2,156	\$1,850	39.59%	\$1,779	\$1,607	\$1,318	\$918	31.28%

See map of regions on page 7 and footnotes on page 24.

Individual Ambulatory Surgery Center Data

Ambulatory Surgery Center	Operating Margin FY09	Total Margin FY09	3-yr Average Total Margin FY07-FY09	Medicare Share of NPR FY09	Medical Assistance Share of NPR FY09	Visits FY09
Statewide Average	26.21%	26.26%	25.63%	24.50%	3.64%	4,162
Lee ASC ^{3, 7}	9.92%	9.92%	-0.26%	23.56%	6.91%	5,799
Ophthalmic Associates SC ^{1, 10}	24.90%	25.00%	17.84%	79.56%	2.45%	5,145
Plastic Surgical Assoc ^{1, 10}	-0.11%	-0.05%	-0.06%	13.83%	1.58%	13,457
Region 4 Average	30.87%	29.95%	25.89%	20.35%	2.25%	3,920
Betz Ophthalmology ^{1, 10, 13}	43.41%	43.41%	58.59%	61.22%	0.00%	787
Central PA Endoscopy Ctr ^{1, 10, 13}	0.00%	0.00%	2.77%	26.94%	0.00%	4,418
Endoscopy PA ^{1, 10}	0.56%	0.58%	0.03%	34.53%	6.46%	3,416
Evangelical ASC ^{1, 10}	8.22%	8.36%	9.33%	10.84%	2.04%	5,485
Geisinger Endo & SC ^{3, 7}	36.07%	36.07%	40.36%	15.86%	2.51%	3,862
Geisinger OP Woodbine	37.97%	35.91%	29.91%	16.54%	2.35%	9,336
Lewisburg Plastic & Laser ^{1, 10, 13}	3.39%	3.39%	4.98%	12.42%	0.00%	341
Mifflin County Com SC ^{1, 10}	-11.12%	-11.12%	0.24%	58.96%	8.21%	1,306
Mount Nittany SC	40.59%	40.59%	32.18%	19.43%	1.74%	6,069
SC Central PA ^{1, 10, 13}	36.35%	36.35%	37.48%	56.23%	1.32%	7,807
Susquehanna Endoscopy ^{2, 4, 10}	-25.17%	-25.17%	NA	67.40%	15.39%	1,095
Susquehanna SC ¹⁰	13.60%	13.60%	10.28%	17.41%	2.84%	2,101
UOC Surgical Services ^{1, 10}	23.58%	23.59%	24.88%	7.44%	2.50%	4,935
Region 5 Average	26.00%	26.20%	25.08%	22.18%	3.09%	4,428
Apple Hill SC ¹⁰	20.48%	20.77%	20.97%	25.01%	2.45%	10,320
Carlisle Endoscopy ^{1, 10}	0.00%	0.00%	0.24%	29.15%	0.56%	5,777
Carlisle Outpatient SC ^{1, 3, 7, 10, 13}	41.99%	41.99%	23.31%	28.78%	1.89%	927
Center for Spine Care ^{1, 7, 10}	5.70%	5.70%	15.48%	9.77%	0.16%	5,858
Center Reproductive ^{1, 10}	19.06%	19.06%	18.98%	0.00%	0.00%	1,154
Chambersburg Endoscopy ^{1, 3, 10}	38.36%	38.36%	35.84%	28.25%	2.69%	5,323
Crossroads SC ^{1, 4, 10}	-26.82%	-26.82%	NA	18.72%	1.34%	5,376
Cumberland SC ^{1, 10, 13}	44.50%	44.61%	36.90%	2.88%	0.00%	665
Digestive Disease Inst ^{1, 10, 13}	-0.34%	-0.34%	-0.56%	17.36%	0.00%	5,173
East York Eye SC ^{1, 3, 10, 13}	-140.03%	-140.03%	NA	81.88%	0.55%	132
Elmwood Endoscopy Center ^{1, 10}	0.11%	0.11%	-3.05%	22.14%	0.98%	1,695
Endoscopy Ctr/Central PA ^{1, 10}	12.67%	12.67%	13.85%	16.39%	0.00%	2,659
Eyes of York SC ^{1, 10}	20.85%	20.85%	11.86%	64.81%	0.00%	1,781
Foot and Ankle SC ^{1, 10}	56.04%	56.04%	52.23%	6.22%	1.07%	1,434

See map of regions on page 7 and footnotes on page 24.

Individual Ambulatory Surgery Center Data

Region/Ambulatory Surgery Center	Net Patient Revenue NPR (thousands)				3-yr Avg Change in NPR FY06-FY09	Total Operating Expenses TOE (thousands)				3-yr Avg Change in TOE FY06-FY09
	FY09	FY08	FY07	FY06		FY09	FY08	FY07	FY06	
Statewide Average	\$3,784	\$3,622	\$3,358	\$2,987	8.89%	\$2,810	\$2,700	\$2,568	\$2,387	5.90%
5 Grandview Surgery & Laser ^{1, 10, 13}	\$7,489	\$6,838	\$5,910	\$4,921	17.39%	\$4,894	\$4,820	\$4,180	\$4,213	5.39%
5 GSH Outpatient SC ⁷	\$4,283	\$2,799	\$1,059	\$2,425	25.55%	\$2,139	\$1,733	\$1,857	\$2,835	-8.19%
5 Hanover SC ^{1, 10, 13}	\$3,861	\$3,438	\$2,938	\$2,839	12.00%	\$3,254	\$3,196	\$2,948	\$2,483	10.36%
5 Harrisburg Endoscopy & SC ^{1, 10}	\$3,716	\$3,748	\$3,753	\$3,704	0.11%	\$3,713	\$3,748	\$3,752	\$3,704	0.08%
5 Harrisburg Pain Mgmt ^{1, 10}	\$3,171	\$2,895	\$2,318	\$1,219	53.35%	\$2,787	\$2,602	\$2,042	\$814	80.82%
5 Hershey Endoscopy Center ^{1, 10}	\$2,903	\$2,844	\$2,414	\$2,399	7.00%	\$1,899	\$1,946	\$1,685	\$1,587	6.54%
5 Hershey Outpatient SC ^{1, 10}	\$7,422	\$7,829	\$7,016	NR	NR	\$7,465	\$7,270	\$7,031	NR	NR
5 Lancaster Gastro Center ^{1, 10}	\$5,079	\$5,022	\$4,564	\$4,084	8.12%	\$1,988	\$2,047	\$1,923	\$1,782	3.85%
5 Leader SC ^{1, 10}	\$1,392	\$1,330	\$1,119	\$1,150	7.01%	\$654	\$687	\$597	\$600	3.00%
5 Ludwick Laser & SC ^{1, 10}	\$1,855	\$1,314	NA	NA	NA	\$1,392	\$1,073	NA	NA	NA
5 Memorial Outpatient Endo ^{2, 4}	\$1,052	NA	NA	NA	NA	\$728	NA	NA	NA	NA
5 Mid-Atlantic Gastro Ctr ^{1, 10}	\$2,698	\$2,972	\$3,064	\$2,727	-0.36%	\$1,383	\$1,415	\$1,652	\$1,894	-9.00%
5 Mid-Atlantic Gastro II ^{1, 3, 10}	\$2,380	\$2,384	\$872	NA	NA	\$1,522	\$1,518	\$632	NA	NA
5 Neurospine Center ^{1, 2, 4, 10}	\$65	NA	NA	NA	NA	\$1,478	NA	NA	NA	NA
5 North Pointe SC ^{1, 10, 13}	\$4,786	\$2,426	NA	NA	NA	\$3,973	\$2,744	NA	NA	NA
5 Ophthalmology & Surgical ^{1, 10}	\$3,585	\$3,398	\$2,771	\$1,573	42.65%	\$2,552	\$2,491	\$1,908	\$1,278	33.24%
5 Ophthalmology SC ^{1, 10, 13}	\$2,346	\$2,411	\$3,153	\$2,428	-1.13%	\$2,541	\$2,514	\$2,562	\$2,221	4.81%
5 OSS Ambulatory SC ^{1, 7, 10}	\$12,802	\$12,556	\$8,223	\$2,320	150.57%	\$8,537	\$7,346	\$4,949	\$3,137	57.38%
5 PA Eye SC ^{1, 10}	\$2,060	\$1,874	\$1,844	\$1,600	9.57%	\$1,633	\$1,438	\$1,372	\$1,011	20.50%
5 Physicians' SC Lancaster ^{1, 10}	\$18,446	\$8,638	NA	NA	NA	\$9,249	\$6,798	NA	NA	NA
5 PRISM Center ^{1, 3, 7, 10}	\$1,701	\$1,841	\$1,514	\$138	NA	\$1,438	\$1,540	\$1,304	\$375	NA
5 SC Lancaster ^{1, 10}	\$9,550	\$10,236	\$9,445	\$8,016	6.38%	\$7,104	\$7,225	\$6,896	\$5,981	6.26%
5 SC of Lebanon ^{1, 10}	\$7,516	\$8,355	\$7,092	\$5,004	16.74%	\$4,162	\$3,986	\$4,195	\$3,737	3.79%
5 SC York	\$3,104	\$4,158	\$4,548	\$5,788	-15.46%	\$3,308	\$4,104	\$4,242	\$5,443	-13.07%
5 Summit SC ¹⁰	\$3,675	\$4,274	\$4,577	\$4,081	-3.31%	\$3,428	\$3,890	\$3,989	\$3,903	-4.05%
5 Susquehanna Valley SC ^{1, 10}	\$10,025	\$10,207	\$9,615	\$9,496	1.86%	\$8,204	\$8,120	\$8,271	\$7,468	3.29%
5 Valley View SC ^{1, 10}	\$1,121	\$1,159	\$1,017	\$993	4.30%	\$1,095	\$1,133	\$1,015	\$933	5.76%
5 Wellspan Endoscopy Center ^{2, 7, 11}	\$890	\$973	\$1,401	\$1,527	NA	\$743	\$815	\$1,055	\$1,014	NA
5 West Shore Endoscopy ^{1, 10}	\$12,485	\$11,500	\$11,767	\$9,555	10.22%	\$8,055	\$7,758	\$7,230	\$6,279	9.43%
5 West Shore SC ^{1, 10}	\$8,144	\$8,002	\$8,294	\$9,220	-3.89%	\$6,145	\$5,950	\$6,014	\$6,528	-1.96%
5 York Endoscopy ^{1, 10, 13}	\$3,019	\$2,985	\$2,287	\$2,587	5.56%	\$2,541	\$2,017	\$1,728	\$1,637	18.39%
5 York Pain Specialists ^{1, 10, 13}	\$1,798	NR	NR	\$839	38.06%	\$1,551	NR	NR	\$574	56.79%

See map of regions on page 7 and footnotes on page 24.

Individual Ambulatory Surgery Center Data

Ambulatory Surgery Center	Operating Margin FY09	Total Margin FY09	3-yr Average Total Margin FY07-FY09	Medicare Share of NPR FY09	Medical Assistance Share of NPR FY09	Visits FY09
Statewide Average	26.21%	26.26%	25.63%	24.50%	3.64%	4,162
Grandview Surgery & Laser ^{1, 10, 13}	34.93%	34.93%	34.92%	15.67%	1.24%	5,448
GSH Outpatient SC ⁷	50.07%	50.07%	29.91%	18.98%	9.53%	3,543
Hanover SC ^{1, 10, 13}	15.72%	15.74%	8.30%	28.80%	0.73%	3,090
Harrisburg Endoscopy & SC ^{1, 10}	0.10%	0.10%	0.04%	23.76%	1.23%	8,952
Harrisburg Pain Mgmt ^{1, 10}	12.10%	12.10%	11.36%	20.38%	2.68%	6,301
Hershey Endoscopy Center ^{1, 10}	34.61%	34.65%	32.27%	17.07%	0.00%	3,680
Hershey Outpatient SC ^{1, 10}	-0.57%	4.60%	4.03%	19.12%	13.02%	6,862
Lancaster Gastro Center ^{1, 10}	60.86%	60.86%	59.37%	16.30%	0.09%	7,436
Leader SC ^{1, 10}	53.00%	53.00%	49.54%	16.50%	0.00%	1,755
Ludwick Laser & SC ^{1, 10}	24.97%	24.97%	NA	72.76%	0.67%	1,888
Memorial Outpatient Endo ^{2, 4}	30.84%	30.84%	NA	19.32%	2.43%	1,855
Mid-Atlantic Gastro Ctr ^{1, 10}	48.73%	48.73%	49.05%	20.97%	0.07%	4,952
Mid-Atlantic Gastro II ^{1, 3, 10}	36.05%	36.05%	34.86%	19.19%	0.00%	4,379
Neurospine Center ^{1, 2, 4, 10}	-2,158.90%	-2,158.90%	NA	6.05%	1.19%	62
North Pointe SC ^{1, 10, 13}	16.98%	17.27%	NA	5.62%	1.50%	1,708
Ophthalmology & Surgical ^{1, 10}	28.80%	28.82%	28.73%	43.80%	2.22%	3,934
Ophthalmology SC ^{1, 10, 13}	-8.33%	-8.33%	3.86%	43.80%	2.10%	2,431
OSS Ambulatory SC ^{1, 7, 10}	33.33%	33.33%	37.97%	14.58%	3.79%	12,204
PA Eye SC ^{1, 10}	20.73%	20.94%	23.44%	37.86%	1.90%	3,604
Physicians' SC Lancaster ^{1, 10}	49.88%	49.88%	NA	17.81%	1.46%	8,852
PRISM Center ^{1, 3, 7, 10}	15.46%	15.46%	15.30%	22.85%	0.18%	2,219
SC Lancaster ^{1, 10}	25.61%	25.61%	27.55%	32.76%	11.08%	7,504
SC of Lebanon ^{1, 10}	44.63%	44.63%	46.26%	28.10%	3.82%	5,565
SC York	-6.56%	-6.42%	1.85%	34.05%	11.56%	2,658
Summit SC ¹⁰	6.72%	6.82%	9.86%	16.54%	3.24%	2,821
Susquehanna Valley SC ^{1, 10}	18.16%	18.20%	17.81%	18.31%	1.43%	10,646
Valley View SC ^{1, 10}	2.33%	2.40%	1.70%	71.50%	0.00%	1,382
Wellspring Endoscopy Center ^{2, 7, 11}	16.52%	16.52%	19.95%	17.84%	1.54%	1,406
West Shore Endoscopy ^{1, 10}	35.49%	35.49%	35.61%	13.01%	1.24%	9,398
West Shore SC ^{1, 10}	24.55%	24.57%	26.11%	28.07%	3.54%	9,013
York Endoscopy ^{1, 10, 13}	16.23%	17.22%	24.66%	25.40%	7.90%	5,763
York Pain Specialists ^{1, 10, 13}	13.70%	13.74%	NR	36.88%	2.84%	4,113

See map of regions on page 7 and footnotes on page 24.

Individual Ambulatory Surgery Center Data

Region/Ambulatory Surgery Center	Net Patient Revenue NPR (thousands)				3-yr Avg Change in NPR FY06-FY09	Total Operating Expenses TOE (thousands)				3-yr Avg Change in TOE FY06-FY09
	FY09	FY08	FY07	FY06		FY09	FY08	FY07	FY06	
Statewide Average	\$3,784	\$3,622	\$3,358	\$2,987	8.89%	\$2,810	\$2,700	\$2,568	\$2,387	5.90%
Region 6 Average	\$3,653	\$3,676	\$3,351	\$3,202	4.69%	\$2,606	\$2,543	\$2,266	\$2,314	4.20%
6 Angelina Theresa Bucci SC ^{1, 10}	\$1,648	\$1,308	\$1,308	\$1,376	6.58%	\$1,324	\$1,061	\$1,123	\$1,180	4.06%
6 Center for Advanced Surg ^{1, 3, 10}	\$4,386	\$3,504	\$1,464	NA	NA	\$3,548	\$3,067	\$1,700	NA	NA
6 Center Same Day Surgery ^{1, 10, 13}	\$4,336	\$4,313	\$4,339	\$4,872	-3.67%	\$3,252	\$3,182	\$3,185	\$3,454	-1.95%
6 Endoscopy Ctr at Gateway ^{1, 10}	\$3,225	\$3,559	NA	NA	NA	\$1,368	\$1,211	NA	NA	NA
6 Eynon SC ^{1, 10, 13}	\$1,805	NR	\$2,244	\$1,854	-0.87%	\$967	NR	\$1,020	\$1,063	-3.04%
6 Guthrie Clinic ⁷	\$3,637	\$3,633	\$3,418	\$3,168	4.94%	\$3,164	\$2,971	\$2,580	\$2,383	10.93%
6 Hazleton ASC ^{1, 10, 13}	\$1,778	\$1,740	\$1,514	\$1,612	3.42%	\$829	\$736	\$1,243	\$1,601	-16.08%
6 Hazleton Endoscopy ^{1, 10}	\$822	\$851	\$913	\$912	-3.27%	\$821	\$851	\$914	\$914	-3.39%
6 Kingston Ophthalmology ^{1, 10}	\$4,993	\$4,730	\$4,323	\$4,423	4.30%	\$2,607	\$2,589	\$2,249	\$2,306	4.34%
6 Mountain Laurel SC ^{1, 10}	\$2,233	\$1,936	\$1,225	NA	NA	\$1,465	\$1,429	\$818	NA	NA
6 NEI AS ^{1, 10}	\$6,693	\$6,238	\$4,551	\$4,569	15.49%	\$5,913	\$5,385	\$3,899	\$3,813	18.36%
6 North East SC ^{1, 10}	\$5,952	\$5,708	\$6,679	\$4,863	7.47%	\$5,471	\$5,395	\$4,916	\$4,452	7.63%
6 Northeast Regional SC ^{1, 10}	\$3,928	\$4,614	\$5,122	\$3,647	2.56%	\$1,533	\$1,630	\$1,611	\$1,515	0.39%
6 Pocono ASC ^{1, 10}	\$5,424	\$5,402	\$4,975	\$4,504	6.81%	\$4,202	\$3,945	\$3,685	\$3,622	5.34%
6 Renaissance Center ^{1, 10}	\$1,132	\$948	\$661	\$564	33.59%	\$1,157	\$968	\$822	\$770	16.75%
6 Riverview ASC ^{1, 10}	\$4,815	\$4,411	\$4,262	\$4,420	2.98%	\$3,458	\$2,890	\$2,618	\$2,583	11.29%
6 Same Day Geisinger South	\$4,329	\$5,212	\$5,043	\$4,561	-1.70%	\$3,911	\$4,054	\$4,070	\$4,314	-3.12%
6 Scranton Endoscopy ^{1, 10}	\$4,989	\$4,913	\$4,825	\$4,376	4.67%	\$1,725	\$1,732	\$1,664	\$1,548	3.81%
6 Surgical Specialty NE PA ^{1, 10}	\$3,272	\$3,147	\$3,444	\$3,512	-2.27%	\$2,807	\$2,680	\$2,668	\$2,699	1.34%
Region 7 Average	\$3,940	\$4,128	\$3,574	\$2,994	10.54%	\$2,527	\$2,691	\$2,454	\$2,203	4.91%
7 Berks Ambulatory SC ^{1, 10}	\$974	\$1,232	\$1,191	\$1,189	-6.03%	\$696	\$900	\$948	\$804	-4.47%
7 Berks Digestive Health ^{1, 10}	\$6,295	\$5,855	\$5,590	\$4,941	9.14%	\$3,210	\$2,919	\$2,949	\$2,711	6.13%
7 Berks Urologic SC ¹⁰	\$3,180	\$2,582	\$2,859	\$3,078	1.11%	\$2,065	\$1,651	\$1,825	\$1,787	5.18%
7 Berkshire Eye SC ^{1, 10}	\$3,255	\$3,036	\$2,754	\$2,543	9.33%	\$1,859	\$1,772	\$1,682	\$1,786	1.36%
7 Bethlehem Endoscopy ^{1, 10}	\$2,391	\$1,872	\$2,072	\$2,005	6.42%	\$1,362	\$1,208	\$1,124	\$1,035	10.52%
7 Center for Specialized ^{1, 3, 10, 13}	\$6,071	\$6,937	\$4,846	\$1,093	NA	\$4,015	\$4,090	\$3,265	\$1,540	NA
7 College Heights Endoscopy ^{1, 10, 13}	\$5,612	\$5,188	\$4,693	\$3,944	14.09%	\$2,280	\$2,178	\$2,182	\$2,039	3.94%
7 Eastern PA Endoscopy ^{1, 10}	\$4,430	\$4,394	\$4,402	\$4,317	0.88%	\$2,231	\$2,101	\$1,933	\$1,945	4.90%
7 Fairgrounds SC ^{1, 10}	\$6,724	\$5,827	\$6,854	\$8,726	-7.65%	\$6,441	\$6,348	\$7,705	\$8,933	-9.30%
7 Keystone SC ^{1, 10}	\$516	\$489	\$484	\$437	6.09%	\$558	\$424	\$453	\$443	8.60%
7 Mahoning Valley ASC ^{1, 10}	\$1,578	\$1,064	\$1,068	\$1,270	8.10%	\$768	\$628	\$648	\$705	2.98%

See map of regions on page 7 and footnotes on page 24.

Individual Ambulatory Surgery Center Data

Ambulatory Surgery Center	Operating Margin FY09	Total Margin FY09	3-yr Average Total Margin FY07-FY09	Medicare Share of NPR FY09	Medical Assistance Share of NPR FY09	Visits FY09
Statewide Average	26.21%	26.26%	25.63%	24.50%	3.64%	4,162
Region 6 Average	30.25%	30.30%	31.92%	28.48%	3.55%	4,775
Angelina Theresa Bucci SC ^{1, 10}	19.68%	19.68%	17.79%	40.67%	1.36%	1,858
Center for Advanced Surg ^{1, 3, 10}	19.10%	19.38%	12.45%	10.77%	3.42%	2,999
Center Same Day Surgery ^{1, 10, 13}	25.00%	25.43%	26.50%	9.27%	5.63%	3,772
Endoscopy Ctr at Gateway ^{1, 10}	57.60%	57.60%	NA	19.52%	0.20%	6,605
Eynon SC ^{1, 10, 13}	46.47%	46.47%	NR	31.00%	4.00%	3,406
Guthrie Clinic ⁷	19.51%	19.51%	24.00%	28.77%	3.92%	6,823
Hazleton ASC ^{1, 10, 13}	53.39%	53.39%	44.20%	32.40%	2.63%	3,421
Hazleton Endoscopy ^{1, 10}	0.18%	0.18%	0.01%	23.16%	0.39%	2,070
Kingston Ophthalmology ^{1, 10}	47.80%	47.80%	47.00%	52.53%	3.60%	5,562
Mountain Laurel SC ^{1, 10}	34.42%	34.42%	31.29%	30.19%	5.77%	4,855
NEI AS ^{1, 10}	11.66%	11.66%	13.15%	78.98%	2.69%	7,314
North East SC ^{1, 10}	24.51%	24.51%	24.36%	9.98%	3.90%	6,780
Northeast Regional SC ^{1, 10}	61.01%	61.01%	65.11%	26.82%	5.39%	6,745
Pocono ASC ^{1, 10}	22.54%	22.74%	25.31%	21.30%	1.51%	7,017
Renaissance Center ^{1, 10}	-2.23%	-2.23%	-7.48%	9.65%	0.00%	348
Riverview ASC ^{1, 10}	28.20%	28.22%	33.65%	19.08%	2.30%	5,978
Same Day Geisinger South	9.65%	9.65%	17.48%	25.67%	7.93%	2,107
Scranton Endoscopy ^{1, 10}	65.42%	65.42%	65.24%	16.31%	0.00%	9,316
Surgical Specialty NE PA ^{1, 10}	14.21%	14.23%	17.33%	25.97%	9.24%	3,742
Region 7 Average	35.99%	36.02%	34.44%	23.82%	1.62%	4,124
Berks Ambulatory SC ^{1, 10}	31.82%	31.82%	26.11%	3.33%	0.00%	784
Berks Digestive Health ^{1, 10}	49.83%	49.84%	50.40%	19.20%	0.06%	11,508
Berks Urologic SC ¹⁰	35.59%	35.59%	36.34%	38.60%	0.77%	7,032
Berkshire Eye SC ^{1, 10}	43.01%	43.01%	41.42%	52.59%	0.64%	3,181
Bethlehem Endoscopy ^{1, 10}	43.03%	42.86%	41.64%	27.86%	2.23%	4,089
Center for Specialized ^{1, 3, 10, 13}	34.62%	34.62%	36.57%	19.55%	1.51%	5,512
College Heights Endoscopy ^{1, 10, 13}	59.37%	59.37%	57.14%	25.31%	0.20%	7,704
Eastern PA Endoscopy ^{1, 10}	49.65%	49.66%	52.72%	23.75%	0.69%	5,840
Fairgrounds SC ^{1, 10}	4.21%	4.27%	-5.47%	13.79%	6.22%	5,872
Keystone SC ^{1, 10}	-8.03%	-8.03%	3.68%	14.19%	0.00%	497
Mahoning Valley ASC ^{1, 10}	51.31%	51.31%	44.97%	79.11%	1.03%	2,686

See map of regions on page 7 and footnotes on page 24.

Individual Ambulatory Surgery Center Data

Region/Ambulatory Surgery Center	Net Patient Revenue NPR (thousands)				3-yr Avg Change in NPR FY06-FY09	Total Operating Expenses TOE (thousands)				3-yr Avg Change in TOE FY06-FY09
	FY09	FY08	FY07	FY06		FY09	FY08	FY07	FY06	
Statewide Average	\$3,784	\$3,622	\$3,358	\$2,987	8.89%	\$2,810	\$2,700	\$2,568	\$2,387	5.90%
7 PA Eye & Ear SC ¹⁰	\$4,574	\$4,554	\$3,942	\$3,600	9.01%	\$3,557	\$3,444	\$2,976	\$2,818	8.74%
7 Premier Podiatric SC ^{1,2,3,10,13}	\$144	\$456	\$381	\$234	NA	\$146	\$402	\$337	\$224	NA
7 Progressive Laser Surgi ^{1,10,13}	\$1,052	\$725	\$586	\$530	32.85%	\$715	\$561	\$546	\$577	7.94%
7 Progressive Surgical Inst ^{1,10,13}	\$1,462	\$1,405	\$1,462	\$1,513	-1.12%	\$773	\$739	\$786	\$826	-2.12%
7 Proserpi-Schlechter ^{1,3,10}	\$204	\$251	\$382	\$261	NA	\$219	\$253	\$396	\$267	NA
7 Reading ASC ^{1,10}	\$8,650	\$8,951	\$9,766	\$9,386	-2.61%	\$4,334	\$4,591	\$4,566	\$4,516	-1.34%
7 Reading Endoscopy Center ^{1,10,13}	\$1,502	\$1,530	\$1,553	\$1,423	1.85%	\$1,206	\$1,200	\$1,244	\$1,136	2.06%
7 Reading SC/Spring Ridge ^{1,10,13}	\$16,769	\$14,059	\$13,064	\$9,591	24.95%	\$11,178	\$10,194	\$9,558	\$9,402	6.30%
7 SC of Allentown ^{1,3,10}	\$17,121	\$17,835	\$8,080	NA	NA	\$10,662	\$10,624	\$5,900	NA	NA
7 SC Pottsville ^{1,10,13}	\$4,239	\$3,977	\$2,762	NA	NA	\$3,371	\$3,200	\$2,945	NA	NA
7 Schuylkill Endoscopy ^{1,10}	\$3,658	\$3,648	\$3,407	\$3,257	4.11%	\$1,886	\$1,975	\$2,025	\$1,850	0.65%
7 State Hill SC ^{1,4,10,13}	\$449	NA	NA	NA	NA	\$449	NA	NA	NA	NA
7 Twin Rivers Endoscopy ^{1,10}	\$3,196	\$3,060	\$2,355	\$1,564	34.78%	\$1,469	\$1,689	\$1,177	\$992	16.02%
7 Valley Access/Eastern PA ^{1,4,10}	\$1,661	NA	NA	NA	NA	\$1,312	NA	NA	NA	NA
7 Valley Access/Lehigh ^{1,4,10}	\$1,038	NA	NA	NA	NA	\$800	NA	NA	NA	NA
7 Valley Eye SC ^{1,10}	\$4,617	\$4,651	\$3,833	\$2,174	37.45%	\$3,779	\$3,808	\$3,576	\$2,687	13.55%
7 Valley Surgical Center ^{1,3,10,13}	\$2,206	\$2,284	\$1,889	\$224	NA	\$1,183	\$1,499	\$1,063	\$215	NA
7 Westfield SC ^{1,10,13}	\$2,315	\$3,321	\$4,198	\$4,474	-16.08%	\$2,205	\$2,989	\$3,225	\$3,047	-9.21%
7 Wyomissing Surgical Serv ^{1,10}	\$2,316	\$2,275	\$2,031	\$1,941	6.45%	\$1,096	\$1,264	\$1,230	\$1,240	-3.86%
Region 8 Average	\$3,539	\$3,326	\$3,062	\$2,759	9.42%	\$2,678	\$2,516	\$2,425	\$2,243	6.46%
8 Abington SC ¹⁰	\$13,104	\$13,301	\$12,733	\$12,676	1.12%	\$11,617	\$11,550	\$10,583	\$10,163	4.77%
8 AFP SC ^{1,3,10}	\$1,026	\$1,319	\$1,429	\$505	NA	\$802	\$1,137	\$1,381	\$507	NA
8 Ambulatory Endo SC/Bucks ^{1,10}	\$2,611	\$2,057	\$1,826	\$1,609	20.77%	\$1,780	\$1,684	\$1,294	\$1,266	13.54%
8 ASC Bucks County ⁷	\$11,127	\$9,051	\$4,309	\$4,592	47.44%	\$6,548	\$5,801	\$2,853	\$2,776	45.29%
8 Best Impression SC ^{1,3,10,13}	\$72	\$21	NA	NA	NA	\$93	\$53	NA	NA	NA
8 Blue Bell SC ^{1,4,10}	\$8,954	NA	NA	NA	NA	\$4,599	NA	NA	NA	NA
8 Brandywine SC ^{1,10,13}	\$310	\$254	NR	\$260	6.31%	\$314	\$257	NR	\$256	7.52%
8 Brandywine Vly Endoscopy ^{1,3,10,13}	\$1,226	\$1,286	\$1,071	\$148	NA	\$885	\$838	\$994	\$205	NA
8 Bucks County GI Endo SC ^{1,3,10}	\$2,766	\$2,692	\$2,300	\$302	NA	\$1,857	\$1,736	\$1,760	\$301	NA
8 Cornerstone ASC ^{1,4,10,13}	\$722	NA	NA	NA	NA	\$1,074	NA	NA	NA	NA
8 Del Valley Ortho/Spine SC ^{1,7,10}	\$3,674	\$3,435	\$3,791	\$3,476	1.90%	\$3,653	\$3,011	\$3,131	\$2,923	8.32%
8 Delaware Valley Laser ^{1,7,10}	\$2,491	\$2,481	\$2,196	\$2,377	1.60%	\$1,848	\$1,977	\$1,684	\$1,769	1.50%

See map of regions on page 7 and footnotes on page 24.

Individual Ambulatory Surgery Center Data

Ambulatory Surgery Center	Operating Margin FY09	Total Margin FY09	3-yr Average Total Margin FY07-FY09	Medicare Share of NPR FY09	Medical Assistance Share of NPR FY09	Visits FY09
Statewide Average	26.21%	26.26%	25.63%	24.50%	3.64%	4,162
PA Eye & Ear SC ¹⁰	22.23%	22.24%	23.77%	35.14%	3.42%	4,213
Premier Podiatric SC ^{1, 2, 3, 10, 13}	-1.46%	-6.21%	9.21%	7.78%	0.41%	65
Progressive Laser Surgi ^{1, 10, 13}	32.07%	32.07%	22.89%	68.22%	11.19%	858
Progressive Surgical Inst ^{1, 10, 13}	47.31%	47.31%	47.17%	69.12%	4.77%	1,569
Proserpi-Schlechter ^{1, 3, 10}	-7.38%	-7.38%	-3.69%	0.00%	0.00%	157
Reading ASC ^{1, 10}	49.91%	49.91%	50.72%	11.34%	1.14%	6,769
Reading Endoscopy Center ^{1, 10, 13}	19.70%	19.70%	20.40%	20.16%	4.52%	2,661
Reading SC/Spring Ridge ^{1, 10, 13}	33.34%	33.41%	29.76%	6.55%	1.83%	8,281
SC of Allentown ^{1, 3, 10}	37.72%	37.72%	36.83%	12.63%	0.09%	8,460
SC Pottsville ^{1, 10, 13}	20.48%	20.48%	13.32%	17.90%	5.53%	3,203
Schuylkill Endoscopy ^{1, 10}	48.45%	48.45%	45.07%	24.93%	2.16%	10,955
State Hill SC ^{1, 4, 10, 13}	0.00%	0.00%	NA	80.12%	0.17%	588
Twin Rivers Endoscopy ^{1, 10}	54.05%	54.09%	50.43%	20.98%	0.00%	4,687
Valley Access/Eastern PA ^{1, 4, 10}	21.04%	21.04%	NA	77.03%	0.28%	1,056
Valley Access/Lehigh ^{1, 4, 10}	22.91%	22.91%	NA	81.64%	0.18%	702
Valley Eye SC ^{1, 10}	18.15%	18.24%	15.48%	63.04%	1.39%	4,971
Valley Surgical Center ^{1, 3, 10, 13}	46.36%	46.63%	41.65%	26.54%	0.76%	3,552
Westfield SC ^{1, 10, 13}	4.76%	5.28%	14.84%	22.60%	0.67%	3,404
Wyomissing Surgical Serv ^{1, 10}	52.69%	52.72%	45.94%	28.33%	0.15%	2,876
Region 8 Average	24.78%	24.84%	23.99%	23.50%	2.88%	4,002
Abington SC ¹⁰	16.03%	16.16%	17.13%	18.15%	1.45%	17,778
AFP SC ^{1, 3, 10}	21.91%	21.91%	12.08%	23.62%	0.00%	1,292
Ambulatory Endo SC/Bucks ^{1, 10}	31.83%	31.83%	26.73%	24.53%	6.66%	5,565
ASC Bucks County ⁷	41.15%	41.15%	37.92%	0.02%	12.31%	9,864
Best Impression SC ^{1, 3, 10, 13}	-29.16%	-29.16%	NA	2.33%	0.00%	299
Blue Bell SC ^{1, 4, 10}	48.64%	48.64%	NA	6.75%	0.01%	2,563
Brandywine SC ^{1, 10, 13}	-1.33%	-1.33%	NR	0.00%	0.00%	315
Brandywine Vly Endoscopy ^{1, 3, 10, 13}	27.84%	27.85%	24.19%	18.82%	0.00%	2,493
Bucks County GI Endo SC ^{1, 3, 10}	32.85%	32.85%	31.00%	20.48%	7.64%	4,436
Comerstone ASC ^{1, 4, 10, 13}	-37.29%	-37.25%	NA	14.72%	3.31%	854
Del Valley Ortho/Spine SC ^{1, 7, 10}	0.57%	0.57%	10.14%	10.87%	10.10%	2,876
Delaware Valley Laser ^{1, 7, 10}	25.80%	25.80%	23.13%	42.33%	8.96%	3,018

See map of regions on page 7 and footnotes on page 24.

Individual Ambulatory Surgery Center Data

Region/Ambulatory Surgery Center	Net Patient Revenue NPR (thousands)				3-yr Avg Change in NPR FY06-FY09	Total Operating Expenses TOE (thousands)				3-yr Avg Change in TOE FY06-FY09
	FY09	FY08	FY07	FY06		FY09	FY08	FY07	FY06	
Statewide Average	\$3,784	\$3,622	\$3,358	\$2,987	8.89%	\$2,810	\$2,700	\$2,568	\$2,387	5.90%
8 Dermatologic/Drexel Hill ^{1, 10}	\$963	\$1,001	\$958	\$995	-1.07%	\$998	\$939	\$861	\$1,049	-1.62%
8 Doylestown SC ^{1, 10, 13}	\$5,298	NR	NR	NR	NR	\$5,338	NR	NR	NR	NR
8 Einstein SC ⁷	\$4,900	\$4,905	\$4,889	\$4,187	5.68%	\$4,179	\$4,355	\$4,444	\$3,810	3.22%
8 Endoscopic Associates ^{1, 10, 13}	\$4,246	\$3,961	\$4,296	\$4,399	-1.16%	\$4,198	\$3,969	\$4,290	\$4,399	-1.52%
8 Endoscopy Center ^{1, 10}	\$2,097	\$2,273	\$2,371	\$2,601	-6.45%	\$2,045	\$1,423	\$1,312	\$1,404	15.23%
8 Endoscopy Center of Bucks ^{1, 10}	\$3,543	\$3,030	\$2,679	NA	NA	\$1,450	\$1,358	\$1,456	NA	NA
8 Endoscopy St Mary ^{1, 10, 13}	\$6,449	\$8,967	\$3,526	NA	NA	\$3,135	\$3,367	\$2,668	NA	NA
8 Eye SC ^{1, 10, 13}	\$4,434	\$4,189	\$3,823	\$2,803	19.39%	\$3,140	\$2,988	\$2,653	\$2,491	8.68%
8 Eye SC Chester ^{1, 10}	\$3,569	\$3,698	\$3,588	\$3,639	-0.64%	\$2,763	\$2,588	\$2,425	\$2,192	8.70%
8 Foundation/Ft Washington ^{1, 10, 13}	\$2,276	\$2,958	\$2,439	\$1,614	13.68%	\$2,034	\$2,676	\$2,440	\$1,766	5.05%
8 Grand View Endoscopy Ctr ³	\$948	\$870	\$799	NA	NA	\$829	\$743	\$710	NA	NA
8 Holy Redeemer ASC ¹⁰	\$5,755	\$6,690	\$5,358	\$5,064	4.55%	\$4,569	\$4,601	\$4,195	\$4,290	2.17%
8 Huntingdon Valley SC ^{1, 10, 13}	\$10,898	\$9,137	\$7,756	\$5,724	30.14%	\$6,085	\$5,375	\$5,302	\$4,641	10.37%
8 Hypertension Nephrology ^{1, 3, 10}	\$1,615	\$1,357	NA	NA	NA	\$967	\$845	NA	NA	NA
8 Keystone Kidney Center ^{1, 10, 13}	\$1,913	\$1,674	\$1,662	\$1,718	3.78%	\$1,108	\$934	\$967	\$959	5.17%
8 Kole Plastic SC ^{1, 10, 14}	\$66	\$46	\$94	\$116	-14.38%	\$62	\$30	\$94	\$117	-15.64%
8 Leonard Dzubow ASC ^{1, 10}	\$594	\$777	\$687	\$794	-8.40%	\$179	\$182	\$170	\$156	4.82%
8 Liberty Eye SC ^{1, 10, 13}	\$3,229	\$3,275	\$3,207	\$3,612	-3.53%	\$2,772	\$2,426	\$2,524	\$2,629	1.82%
8 Main Line Endoscopy/East ^{1, 10}	\$3,318	\$3,625	\$3,810	\$3,520	-1.91%	\$1,607	\$1,698	\$1,659	\$1,576	0.66%
8 Main Line Endoscopy/South ^{1, 10}	\$371	\$248	\$689	\$840	-18.62%	\$223	\$618	\$756	\$779	-23.81%
8 Main Line Endoscopy/West ^{1, 10}	\$4,865	\$5,012	\$4,990	\$3,681	10.72%	\$2,068	\$2,232	\$2,247	\$1,661	8.17%
8 Main Line SC ^{1, 10}	\$7,557	\$6,836	\$5,194	\$5,233	14.80%	\$6,285	\$4,803	\$3,885	\$3,764	22.32%
8 Main Line Spine SC ^{1, 10, 13}	\$2,728	\$2,509	\$2,450	\$1,806	17.01%	\$2,017	\$1,918	\$1,363	\$1,124	26.49%
8 Manoa Diagnostic Center ^{1, 10}	\$1,967	NR	\$1,663	NR	NR	\$842	NR	\$545	NR	NR
8 Montgomery SC ^{1, 10}	\$2,495	\$2,530	\$2,470	\$2,294	2.92%	\$2,451	\$2,496	\$2,553	\$2,341	1.57%
8 Pain & SC/Langhorne ^{1, 10}	\$2,026	\$1,275	NA	NA	NA	\$1,806	\$1,506	NA	NA	NA
8 Paoli SC ^{1, 10, 13}	\$5,318	\$4,474	\$4,894	\$4,379	7.15%	\$4,755	\$4,374	\$4,644	\$3,987	6.42%
8 Penn Medicine Radnor Endo ⁷	\$3,222	\$2,998	\$2,469	\$2,660	7.04%	\$3,218	\$3,267	\$2,881	\$2,517	9.29%
8 Plaza SC ^{1, 10}	\$264	\$346	\$297	\$309	-4.88%	\$263	\$346	\$303	\$309	-5.01%
8 PMA Gastroenterology ^{1, 10}	\$2,278	\$379	NA	NA	NA	\$1,966	\$927	NA	NA	NA
8 Pottstown SC ^{1, 10}	\$1,842	\$1,694	\$1,627	\$1,480	8.15%	\$1,392	\$1,213	\$1,272	\$1,303	2.25%
8 Quality Vascular Access ^{1, 3, 10}	\$1,618	\$1,454	NA	NA	NA	\$1,008	\$858	NA	NA	NA

See map of regions on page 7 and footnotes on page 24.

Individual Ambulatory Surgery Center Data

Ambulatory Surgery Center	Operating Margin FY09	Total Margin FY09	3-yr Average Total Margin FY07-FY09	Medicare Share of NPR FY09	Medical Assistance Share of NPR FY09	Visits FY09
Statewide Average	26.21%	26.26%	25.63%	24.50%	3.64%	4,162
Dermatologic/Drexel Hill ^{1, 10}	-3.62%	-3.62%	4.25%	20.97%	0.00%	2,354
Doylestown SC ^{1, 10, 13}	-0.58%	-0.58%	NR	26.00%	0.00%	5,136
Einstein SC ⁷	20.55%	20.55%	17.56%	25.41%	18.42%	3,150
Endoscopic Associates ^{1, 10, 13}	1.15%	1.76%	1.04%	12.97%	0.00%	8,652
Endoscopy Center ^{1, 10}	2.49%	2.49%	29.09%	23.40%	1.02%	4,634
Endoscopy Center of Bucks ^{1, 10}	59.07%	59.12%	54.00%	20.25%	0.00%	6,411
Endoscopy St Mary ^{1, 10, 13}	51.39%	51.67%	51.74%	10.75%	0.00%	5,552
Eye SC ^{1, 10, 13}	29.20%	29.22%	29.51%	63.32%	4.61%	6,130
Eye SC Chester ^{1, 10}	22.58%	22.70%	28.58%	45.08%	3.09%	3,593
Foundation/Ft Washington ^{1, 10, 13}	10.64%	10.64%	6.82%	27.77%	0.00%	1,102
Grand View Endoscopy Ctr ³	12.56%	12.56%	12.82%	14.94%	0.21%	762
Holy Redeemer ASC ¹⁰	20.61%	20.97%	25.34%	12.90%	0.00%	5,551
Huntingdon Valley SC ^{1, 10, 13}	44.17%	44.17%	39.68%	7.26%	0.00%	7,159
Hypertension Nephrology ^{1, 3, 10}	40.08%	40.08%	NA	45.94%	0.49%	1,378
Keystone Kidney Center ^{1, 10, 13}	42.08%	42.08%	42.67%	0.36%	0.64%	427
Kole Plastic SC ^{1, 10, 14}	6.16%	6.16%	10.26%	0.00%	0.00%	50
Leonard Dzubow ASC ^{1, 10}	69.92%	70.03%	74.45%	34.63%	0.00%	1,439
Liberty Eye SC ^{1, 10, 13}	14.14%	14.14%	20.79%	66.26%	8.48%	3,979
Main Line Endoscopy/East ^{1, 10}	51.57%	51.57%	54.73%	22.62%	0.00%	7,983
Main Line Endoscopy/South ^{1, 10}	39.98%	39.98%	4.95%	26.46%	0.00%	718
Main Line Endoscopy/West ^{1, 10}	57.48%	57.49%	56.59%	19.04%	0.00%	7,864
Main Line SC ^{1, 10}	16.83%	16.89%	23.58%	41.30%	2.42%	5,504
Main Line Spine SC ^{1, 10, 13}	26.05%	26.07%	31.09%	19.41%	0.18%	4,877
Manoa Diagnostic Center ^{1, 10}	57.18%	57.18%	NR	31.20%	0.00%	4,128
Montgomery SC ^{1, 10}	1.73%	1.73%	-0.07%	59.55%	1.46%	2,225
Pain & SC/Langhome ^{1, 10}	10.83%	10.83%	NA	23.96%	5.01%	3,876
Paoli SC ^{1, 10, 13}	10.98%	10.98%	6.79%	10.20%	0.15%	4,093
Penn Medicine Radnor Endo ⁷	0.16%	0.16%	-7.51%	28.03%	1.73%	3,289
Plaza SC ^{1, 10}	0.47%	0.47%	-0.53%	0.00%	0.00%	134
PMA Gastroenterology ^{1, 10}	13.70%	13.84%	NA	17.31%	1.82%	4,201
Pottstown SC ^{1, 10}	24.44%	24.44%	24.92%	14.70%	0.00%	3,733
Quality Vascular Access ^{1, 3, 10}	37.72%	37.72%	NA	50.93%	0.63%	1,402

See map of regions on page 7 and footnotes on page 24.

Individual Ambulatory Surgery Center Data

Region/Ambulatory Surgery Center	Net Patient Revenue NPR (thousands)				3-yr Avg Change in NPR FY06-FY09	Total Operating Expenses TOE (thousands)				3-yr Avg Change in TOE FY06-FY09
	FY09	FY08	FY07	FY06		FY09	FY08	FY07	FY06	
Statewide Average	\$3,784	\$3,622	\$3,358	\$2,987	8.89%	\$2,810	\$2,700	\$2,568	\$2,387	5.90%
8 Sally Balin ASC ^{1, 10}	\$552	\$721	\$603	\$603	-2.84%	\$550	\$673	\$639	\$596	-2.56%
8 SC at Brinton Lake ^{1, 3, 10}	\$7,058	\$5,784	\$4,076	\$2,543	NA	\$6,508	\$5,654	\$4,769	\$4,172	NA
8 SC Chester County ^{1, 10}	\$2,263	\$2,826	\$2,361	\$3,147	-9.37%	\$2,383	\$2,831	\$2,089	\$2,769	-4.64%
8 SC Limerick ^{1, 7, 10, 13}	\$5,246	\$5,479	\$4,890	\$4,264	7.68%	\$2,904	\$3,312	\$2,912	\$2,428	6.53%
8 SC of the Main Line ^{1, 3, 10, 13}	\$5,392	\$4,703	\$770	NA	NA	\$4,678	\$4,772	\$1,714	NA	NA
8 SC Pennsylvania ^{1, 10, 13}	\$6,912	\$5,668	\$5,727	\$5,994	5.10%	\$5,394	\$5,221	\$5,283	\$5,260	0.85%
8 Springfield ASC ^{1, 10}	\$4,413	\$4,702	\$4,228	\$4,365	0.37%	\$3,003	\$3,197	\$2,976	\$2,557	5.82%
8 Trevoze Specialty Care SC ^{1, 2, 4, 10, 13}	\$674	NA	NA	NA	NA	\$944	NA	NA	NA	NA
8 Tri-County Eye Surgery ^{1, 10}	\$2,568	\$2,451	\$2,840	\$2,310	3.72%	\$1,631	\$1,673	\$1,714	\$1,334	7.44%
8 Turk's Head SC ^{1, 10}	\$4,881	\$4,675	\$3,519	\$3,292	16.10%	\$5,040	\$4,216	\$3,979	\$3,750	11.46%
8 Valley Pain Center ^{1, 10}	\$3,183	\$3,043	\$2,690	\$2,256	13.70%	\$2,593	\$2,781	\$2,393	\$2,655	-0.79%
8 West Chester Endoscopy ^{1, 10, 13}	\$3,793	\$4,551	\$3,632	\$1,275	65.87%	\$2,085	\$2,052	\$1,757	\$1,411	15.94%
8 Wills Eye SC Plymouth Mtg ¹⁰	\$3,617	\$4,354	\$4,163	\$3,999	-3.19%	\$3,225	\$3,658	\$3,593	\$3,368	-1.41%
8 Wills SC Bucks County ¹⁰	\$3,943	\$3,838	\$3,593	\$3,760	1.62%	\$3,563	\$3,499	\$3,497	\$3,268	3.01%
Region 9 Average	\$3,030	\$2,882	\$2,718	\$2,794	2.81%	\$2,529	\$2,503	\$2,397	\$2,425	1.43%
9 CHOP ASC Exton ⁷	\$9,039	\$8,685	\$4,734	\$4,727	30.41%	\$4,741	\$4,409	\$2,613	\$2,503	29.80%
9 Clinical Nephrology Assoc ^{1, 2, 4, 10}	\$1,234	NA	NA	NA	NA	\$1,108	NA	NA	NA	NA
9 Dermatologic/Philadelphia ^{1, 10}	\$509	\$732	\$910	\$837	-13.07%	\$505	\$637	\$751	\$861	-13.80%
9 Drexel Centers	\$1,368	\$1,098	\$1,040	\$910	16.80%	\$873	\$720	\$686	\$685	9.18%
9 Gastrointestinal Spec ^{1, 10}	\$2,455	\$2,371	\$2,372	\$2,130	5.08%	\$2,483	\$2,264	\$2,382	\$2,136	5.41%
9 HUP Reproductive Surgical	\$946	\$829	\$789	\$714	10.82%	\$952	\$973	\$673	\$701	11.93%
9 Metropolitan Nephrology ^{1, 2, 4, 10}	\$859	NA	NA	NA	NA	\$766	NA	NA	NA	NA
9 Mt Airy AESC ^{1, 10, 13}	\$1,198	\$1,392	\$1,362	NA	NA	\$883	\$1,547	\$1,380	NA	NA
9 PGC Endoscopy ^{1, 10}	\$1,804	\$1,624	NA	NA	NA	\$1,752	\$1,539	NA	NA	NA
9 Philadelphia SC ¹⁰	\$1,979	\$1,815	\$1,777	\$1,603	7.82%	\$1,516	\$1,779	\$1,885	\$1,586	-1.46%
9 Red Lion SC ^{1, 10}	\$2,685	\$1,996	NA	NA	NA	\$1,735	\$1,864	NA	NA	NA
9 SC of Pennsylvania Hosp ^{4, 13}	\$4,002	NA	NA	NA	NA	\$4,097	NA	NA	NA	NA
9 Temple Univ/Podiatric ASC ⁷	\$58	\$29	(\$30)	\$164	-21.50%	\$360	\$297	\$307	\$277	10.02%
9 Washington Endoscopy ^{1, 10, 13}	\$4,492	\$4,249	\$5,190	\$4,079	3.38%	\$3,274	\$2,984	\$3,019	\$2,660	7.69%
9 Wills SC Northeast ¹⁰	\$3,376	\$3,154	\$2,796	\$2,479	12.06%	\$3,149	\$3,225	\$2,959	\$2,704	5.49%
9 Wills SC/Phila Stadium ¹⁰	\$5,301	\$5,386	\$4,605	\$3,820	12.92%	\$4,313	\$4,500	\$4,114	\$3,647	6.09%
9 Wills Surgical Ctr City	\$10,203	\$9,630	\$9,707	\$9,272	3.35%	\$10,480	\$9,709	\$9,574	\$8,914	5.86%

See map of regions on page 7 and footnotes on page 24.

Individual Ambulatory Surgery Center Data

Ambulatory Surgery Center	Operating Margin FY09	Total Margin FY09	3-yr Average Total Margin FY07-FY09	Medicare Share of NPR FY09	Medical Assistance Share of NPR FY09	Visits FY09
Statewide Average	26.21%	26.26%	25.63%	24.50%	3.64%	4,162
Sally Balin ASC ^{1, 10}	0.29%	0.29%	0.75%	46.95%	0.00%	804
SC at Brinton Lake ^{1, 3, 10}	7.79%	7.79%	-0.04%	17.03%	10.27%	7,054
SC Chester County ^{1, 10}	-5.30%	-5.30%	1.98%	13.69%	0.00%	3,106
SC Limerick ^{1, 7, 10, 13}	44.63%	44.63%	41.54%	33.19%	1.46%	4,019
SC of the Main Line ^{1, 3, 10, 13}	13.25%	13.25%	-2.63%	12.81%	0.00%	4,290
SC Pennsylvania ^{1, 10, 13}	21.97%	22.06%	13.26%	33.31%	1.77%	7,037
Springfield ASC ^{1, 10}	31.94%	31.83%	31.19%	18.82%	0.00%	7,675
Treose Specialty Care SC ^{1, 2, 4, 10, 13}	-40.08%	-40.08%	NA	25.01%	0.00%	1,135
Tri-County Eye Surgery ^{1, 10}	36.47%	36.50%	36.19%	75.17%	1.88%	2,379
Turk's Head SC ^{1, 10}	-3.24%	-2.34%	-0.56%	22.59%	1.41%	5,161
Valley Pain Center ^{1, 10}	18.96%	18.96%	13.83%	14.00%	0.00%	4,160
West Chester Endoscopy ^{1, 10, 13}	45.03%	45.03%	50.79%	12.57%	0.85%	6,408
Wills Eye SC Plymouth Mtg ¹⁰	11.09%	11.09%	14.30%	62.81%	1.28%	3,020
Wills SC Bucks County ¹⁰	10.39%	10.39%	9.25%	56.34%	6.28%	3,038
Region 9 Average	17.44%	17.37%	14.79%	22.53%	9.01%	3,631
CHOP ASC Exton ⁷	47.55%	47.55%	47.62%	0.00%	10.48%	8,507
Clinical Nephrology Assoc ^{1, 2, 4, 10}	10.20%	10.20%	NA	60.07%	0.29%	619
Dermatologic/Philadelphia ^{1, 10}	0.83%	0.83%	12.01%	18.35%	0.00%	1,733
Drexel Centers	36.14%	36.14%	34.97%	21.11%	11.28%	2,667
Gastrointestinal Spec ^{1, 10}	-1.16%	-1.16%	0.97%	20.88%	3.01%	5,012
HUP Reproductive Surgical	11.34%	11.34%	9.39%	0.00%	0.00%	491
Metropolitan Nephrology ^{1, 2, 4, 10}	10.78%	10.78%	NA	53.92%	1.24%	404
Mt Airy AESC ^{1, 10, 13}	26.32%	26.32%	3.58%	13.89%	18.85%	2,167
PGC Endoscopy ^{1, 10}	2.87%	2.90%	NA	24.79%	4.40%	3,983
Philadelphia SC ¹⁰	23.37%	23.37%	8.70%	12.76%	4.74%	4,576
Red Lion SC ^{1, 10}	35.38%	35.38%	NA	0.00%	47.98%	1,577
SC of Pennsylvania Hosp ^{4, 13}	5.22%	5.22%	NA	16.87%	9.35%	2,632
Temple Univ/Podiatric ASC ⁷	-517.91%	-517.91%	-1,608.60%	8.59%	49.64%	144
Washington Endoscopy ^{1, 10, 13}	27.14%	27.14%	33.49%	8.68%	4.66%	9,402
Wills SC Northeast ¹⁰	6.90%	5.92%	0.32%	43.73%	4.64%	4,011
Wills SC/Phila Stadium ¹⁰	18.81%	18.65%	15.60%	32.45%	8.86%	6,342
Wills Surgical Ctr City	-1.76%	-1.76%	-0.07%	42.97%	5.10%	7,464

See map of regions on page 7 and footnotes on page 24.

Footnotes

1. The end of the fiscal year is not June 30. The data reflects the fiscal year that ended prior to June 30.
2. The data is less than 12 months; therefore, a three-year comparison is not appropriate for some of the measures.
3. Prior year(s) reflect less than 12 months of data; therefore, a three-year comparison is not appropriate for some of the measures.
4. This is the first reporting year for this facility. Often expenses are higher than operating revenue during the start-up period. Three-year comparisons are not appropriate for this facility.
5. The hospital has specialty units such as psychiatric, rehabilitation, long-term care, skilled nursing, home health, etc., which are included in the data presented for the facility.
6. Extraordinary item(s) reported on audited financial statement was included in the calculation of total margin.
7. Balance sheet ratios are for the parent organization.
8. Acquired or merged with another licensed hospital during the FY09 reporting period.
9. Acquired or merged with another licensed hospital during the FY07 or FY08 reporting periods.
10. For-profit facility
11. Facility is referred to by a different name, or it closed after the FY09 reporting period.
12. Facility failed to satisfy the financial filing requirements.
13. One or more of the required financial submissions was filed late.
14. Facility submitted incomplete or inaccurate data.
- NR Information necessary to report or calculate this measure was not reported by the facility.
- NA Not applicable.

Note: The above footnotes are applicable to all reports in PHC4's Financial Analysis series.

Explanation of Terms and Measures

3-year Average Change in Net Patient Revenue (NPR) or Total Operating Expenses (TOE): The average annual change in the facility's NPR or TOE that occurred from the end of FY06 through FY09.

$$\left[\frac{(\text{NPR}_{09} - \text{NPR}_{06}) / \text{NPR}_{06}}{3} \right] \text{ or } \left[\frac{(\text{TOE}_{09} - \text{TOE}_{06}) / \text{TOE}_{06}}{3} \right]$$

3-year Average Total Margin: The average total margin realized by the facility during FY07 through FY09.

$$\left(\frac{\Sigma_{09, 08, 07} \text{revenue over expenses}}{\Sigma_{09, 08, 07} \text{total revenue}} \right)$$

Ambulatory Surgery Center (ASC): A licensed facility, not located on the premises of a hospital (freestanding), that provides surgical care to patients who do not require overnight hospitalization, but who do require medical supervision following a procedure. An ASC does not include individual or group practice offices of private physicians or dentists, unless such offices have a distinct licensed outpatient surgical unit.

Commercial Third-Party Payers: Commercial insurers encompass all indemnity and managed care health insurance plans, including Blue Cross and Blue Shield plans, and hospital and health system plans. Government-funded programs, such as Medicare managed care, are not included even if a commercial insurer administers the program.

Long-Term Acute Care (LTAC) Hospital: A licensed acute care hospital where the average length of stay is typically over 25 days.

Net Patient Revenue (NPR): Net patient revenue reflects revenue for patient care only and does not include revenue from other operations, such as the cafeteria, parking, rent, research and educational activities. Revenue from those operations is included in total operating revenue. NPR may include retroactive adjustments from third-party payers for care provided during a previous fiscal year.

Other Third-Party Payers: Third-party payers other than health insurance companies and managed care organizations. These include direct payments by employers or associations, auto insurance, workers compensation, and government programs (other than Medicare and Medical Assistance).

Operating Income: The amount by which total operating revenue exceeds total operating expenses.

$$(\text{total operating revenue} - \text{total operating expenses})$$

Operating Margin: The ratio of operating income to total operating revenue. This measure places operating income in perspective with the volume of business realized by the facility.

$$(\text{operating income} / \text{total operating revenue})$$

Outpatient Visits: The number of visits to the individual outpatient units of the hospital or surgery center during the fiscal year.

Psychiatric Hospital: A licensed institution, other than a general acute care hospital, engaged in providing short-term acute psychiatric services on an inpatient basis. Psychiatric hospitals may also offer long-term residential and outpatient programs. Acute psychiatric care is rendered in response to severe psychiatric conditions requiring intensive or extensive intervention to bring the patient's symptoms under control.

Rehabilitation Hospital: A licensed inpatient facility, other than a general acute care hospital, which is operated for the primary purpose of assisting in the physical rehabilitation of persons through an integrated program of medical and other services. Rehabilitation hospitals may also offer outpatient services.

Total Margin: The ratio of total income to total revenue. This measure puts income from all sources in perspective with all revenues received by a facility.

$$(\text{revenue over expenses} / \text{total revenue})$$

Total Net Income (Revenue over Expenses): Total net income reflects the sum of operating income and non-operating income. Total income may also include an extraordinary item, such as the gain or loss from the sale of securities.

Total Operating Expenses (TOE): All costs associated with operating the entire facility, such as salaries, professional fees, supplies, depreciation, interest, insurance and bad debts. The acquisition of durable equipment and other property are not considered expenses and are reflected on the facilities balance sheet as assets. However, the cost to finance equipment (interest) as well as the depreciation, operation and maintenance costs of capital equipment are operating expenses.

Total Operating Revenue (TOR): All revenues allocated by the facility to meet operating expenses. Includes revenue sources such as net patient revenue, investment income, contributions, and revenue from other operations (e.g., cafeteria, parking, rent, research and educational activities). Individual facilities may also allocate investment income, contributions, etc., as non-operating income.

Total Revenue: Operating revenue plus non-operating income. The non-operating income component typically includes unrestricted contributions, investment income, and net investment gains and losses on marketable securities.

Non-Compliant Ambulatory Surgery Centers

No Submission

The following ambulatory surgery centers were not in compliance with one or more of PHC4's filing requirements and are not included in this report.

Brookpark SC
Bryn Mawr Med Specialists
Carbon-Schuylkill Endoscopy
Conyngham Valley SC
Gettysburg ASC (*closed 5/2009*)
Lackawanna SC
Northwood SC
Penn Surgery Inst (*closed 6/2009*)
Phila Cosmetic Surgery
Pine Grove ASC
Rhawn Street Endoscopy
Ridley Crossing SC
USVAC ASC (*closed 8/2009*)
Valley ASC
Valley Forge SC
Williamsport SC

Late Submission

The following ambulatory surgery centers submitted their annual financial data and/or the supporting audited financial statements late.

20/20 SC
Allegheny Reg Endoscopy
Altoona Specialty Center
Best Impression SC
Betz Ophthalmology
Brandywine SC
Brandywine Valley Endoscopy
Carlisle Outpatient SC
Center for Specialized
Center Same Day Surgery
Central PA Endoscopy Ctr
College Heights Endoscopy
Cornerstone ASC
Cumberland SC
Digestive Disease Inst
Doylestown SC
East Side SC
East York Eye SC
Endoscopic Associates
Endoscopy St Mary
Eye SC
Eynon SC
Foundation/Ft Washington
Gamma SC
Grandview Surgery & Laser
Hanover SC
Hazleton ASC
Huntingdon Valley SC
Keystone Kidney Center
Laurel Surgical Center
Lewisburg Plastic & Laser
Liberty Eye SC
Main Line Spine SC
Mt Airy AESC
Mt Pleasant SC
North Pointe SC
Ophthalmology SC
Paoli SC
Premier Podiatric SC
Progressive Laser Surgical
Progressive Surgical Inst
Reading Endoscopy Center
Reading SC/Spring Ridge
Regional ASC
Saint Vincent Endoscopy
SC Central PA
SC Edgeworth Commons
SC Limerick
SC of Pennsylvania Hosp
SC of the Main Line
SC Pennsylvania
SC Pottsville
Southwestern ASC
Southwestern Endoscopy
Spartan Health SC
State Hill SC
Trevoze Specialty Care SC
Tri-State SC
Valley Surgical Center
Washington Endoscopy
West Chester Endoscopy
Western PA SC
Westfield SC
York Endoscopy
York Pain Specialists



Pennsylvania Health Care Cost Containment Council

Joe Martin, Executive Director

225 Market Street, Suite 400, Harrisburg, PA 17101

Phone: 717-232-6787 • Fax: 717-232-3821

www.phc4.org

FOR MORE INFORMATION

The information contained in this report and other PHC4 publications is available online at www.phc4.org. Additional financial, hospitalization and ambulatory procedure health care data is available for purchase. For more information, contact PHC4's Data Requests Unit at specialrequests@phc4.org or 717-232-6787.